



MLT2H-LP



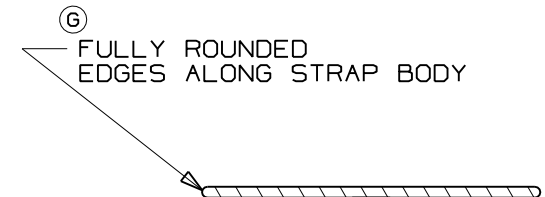
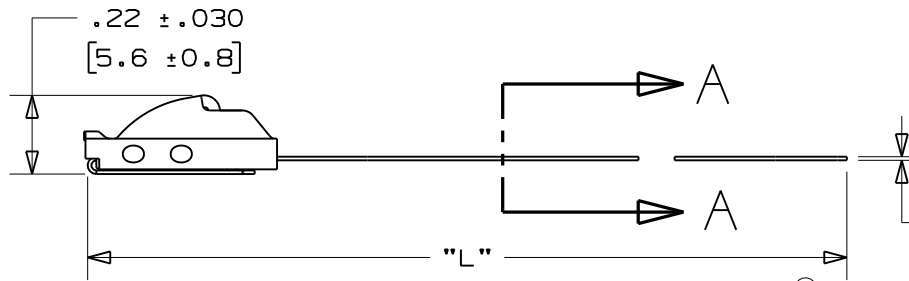
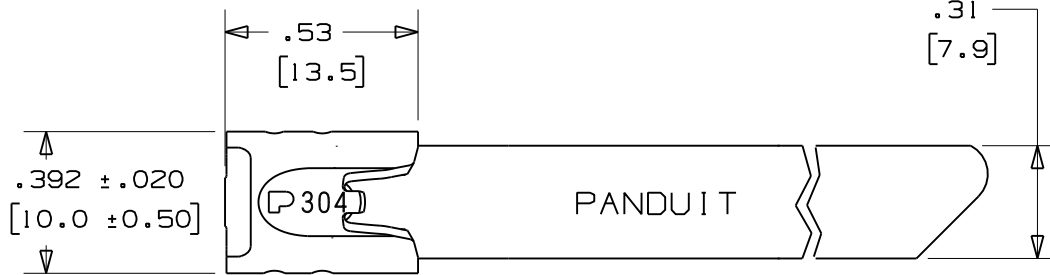
- The *Pan-Steel*® system provides a strong durable method of bundling and fastening. Stainless steel cable ties can be used in virtually all indoor, outdoor and underground (including direct burial) applications. They are especially well suited for network bundling of data and power cables. Their high strength, non-flammability, fully rounded edges and exclusive easy thread lead-in design provide the ultimate support for network cables.
- Self-locking head design speeds installation and locks into place at any length along the tie body
 - Provides a strong, durable method of cable bundling
 - Can be used in a wide range of indoor, outdoor, and underground (including direct burial) applications
 - Smooth surfaces and rounded edges assures cable protection and worker safety
 - Available in AISI 304 stainless steel for general-purpose applications
 - Available in AISI 316 stainless steel for the most corrosive environments
- Product Specifications
 - Material: Type 304 or 316 stainless steel
 - Temperature range: -112°F (-80°C) to 1000°F (538°C)
 - Water absorption: none
 - Flammability: non-flammable
 - Ultraviolet resistance: excellent
 - Chemical resistance: excellent
 - Radiation resistance: 2 x 10⁸ rads
 - Loop tensile strength range: 200-900 lbs. (890-4005N) (see chart for sizes)
 - Fully rounded edges and smooth surfaces
 - Estimated outdoor service life of 40 years

■ Part Number	MLT2H-LP
■ RoHS Compliancy Status	Compliant
■ Part Description	Stainless steel cable tie, heavy, 2" (50mm) max bundle diameter.
■ Product Type	Cable Ties
■ Material	Stainless Steel Type 304
■ Color	natural
■ UL Listed	Yes
■ Length (In.)	7.9
■ Length (mm)	201
■ Width (In.)	.31
■ Width (mm)	7.9
■ Cross Section	Heavy
■ Max. Bundle Diameter (In.)	2.0
■ Max. Bundle Diameter (mm)	51

■ Min. Bundle Diameter (In.)	.50
■ Min. Bundle Diameter (mm)	12.7
■ Min. Loop Tensile Strength (Lbs.)	450
■ Min. Loop Tensile Strength (N)	2000
■ Pricing Description	MLT Tie, 304 SS, Heavy, 7.9" (201mm), .010" (.25mm) thk
■ Thickness (In.)	.010
■ Thickness (mm)	.25
■ Tool	GS4MT, HTMT, PPTMT, ST2MT
■ Min. Order UOM	PC
■ Min. Order Qty.	50
■ BOM Qty. (# of Pkgs.)	

THIS COPY IS PROVIDED ON A RESTRICTED BASIS AND IS NOT TO BE USED IN ANY WAY DETRIMENTAL TO THE INTERESTS OF PANDUIT CORP.

PANDUIT PART NO.	PACKAGE QTY.	MAX BUNDLE DIA	LENGTH L ±.3 (7)
(B) MLT2H-LP	50	2" (51)	7.9" (201)
(E) MLT2.7H-LP	50	2.7" (69)	10.2" (259)
(C) MLT4H-LP	50	4" (102)	14.3" (362)
MLT6H-LP	50	6" (152)	20.5" (521)
MLT8H-LP	50	8" (203)	26.8" (679)
MLT10H-LP	50	10" (254)	33.0" (838)
MLT12H-Q	25	12" (304)	39.3" (998)
MLT14H-Q	25	14" (355)	45.5" (1156)
(H) MLT2H-TL	250	2" (51)	7.9" (201)
MLT4H-TL	250	4" (102)	14.3" (362)



SECTION A - A
SCALE: 6x

NOTES:

- 1.) APPLICATION TOOLS - GS4MT, PPTMT, ST2MT, ST3MT, HTMT
- (A) 2.) MINIMUM LOOP TENSILE STRENGTH - 450 LBS. (2000 NEWTONS) WHEN TESTED ON A 1.5" MANDREL.
- 3.) [] DENOTES DIMENSION IN MILLIMETERS
- 4.) TOLERANCES:
 .XXX = ±.010 (.25)
 .XX = ±.02 (.5)
 .X = ±.03 (.8)
 ANGLES = ±2°
- 5.) MATERIAL: 304 STAINLESS STEEL

REV	DATE	BY	CHK	DESCRIPTION	ECN #	PM	CUST
04	11/06	JAMB	SKB	(H) ADDED PANDUIT PART NO'S. MLT2H-TL & MLT4H-TL PACKAGE QTY. 250 TO TABLE	SS00281	---	---
03	8/04	JAMB	DPN	(G) REMOVED "AISI NO.1 FULL RADIUSED" AND REPLACED WITH "FULLY ROUNDED"	11907	CCH	JJB
02	10/03	BRH	DPN	(F) ADDED ST3MT TO APPLICATION TOOLS NOTE	11162	CCH	JJB
01	6/03	JAMB	DPN	(A) MIN LOOP TENSILE STRENGTH WAS 250 LBS. (1112 NEWTONS) (G) MAX. BUNDLE DIA. (mm) WAS (50)	10568	CCH	JJB
--	----	----	----	(C) MAX. BUNDLE DIA. (mm) WAS (101), LGTH. WAS 14.2 (361) (D) TOL. WAS ±.2 (5) (E) MAX BUNDLE (mm) WAS (68).	-----	---	---
00	9/02	JAMB	DPN	RELEASED	10059	CCH	JJB

PANDUIT

CORP.

TINLEY PARK, ILLINOIS

METAL LOCKING TIE
HEAVY SERIES - 304 STAINLESS STEEL

DRAWN BY JAMB	CHK'D DPN	SCALE 2x	DRAWING NO. S41115
------------------	--------------	-------------	-----------------------

S41115_04