



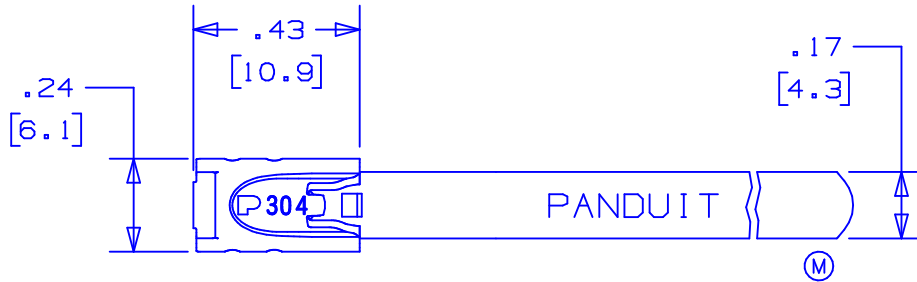
MLT1S-CP



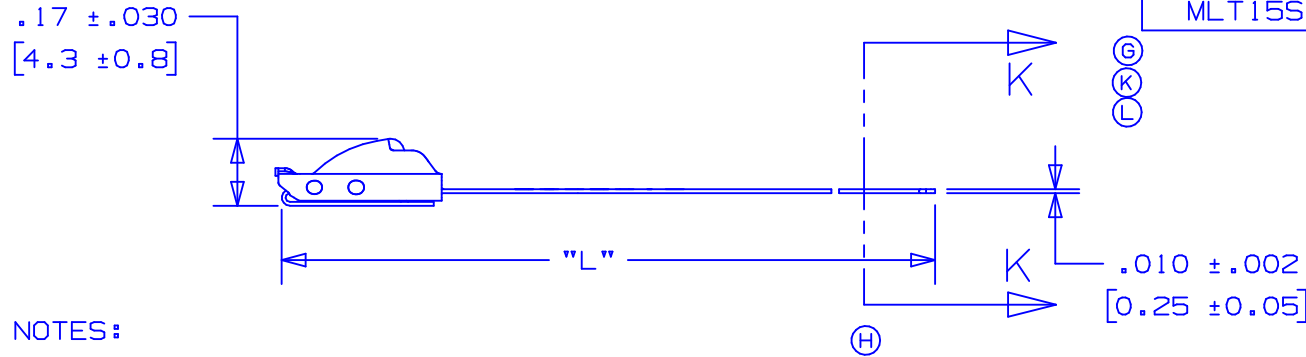
- The *Pan-Steel*® system provides a strong durable method of bundling and fastening. Stainless steel cable ties can be used in virtually all indoor, outdoor and underground (including direct burial) applications. They are especially well suited for network bundling of data and power cables. Their high strength, non-flammability, fully rounded edges and exclusive easy thread lead-in design provide the ultimate support for network cables.
- Self-locking head design speeds installation and locks into place at any length along the tie body
 - Provides a strong, durable method of cable bundling
 - Can be used in a wide range of indoor, outdoor, and underground (including direct burial) applications
 - Smooth surfaces and rounded edges assures cable protection and worker safety
 - Available in AISI 304 stainless steel for general-purpose applications
 - Available in AISI 316 stainless steel for the most corrosive environments
- Product Specifications
 - Material: Type 304 or 316 stainless steel
 - Temperature range: -112°F (-80°C) to 1000°F (538°C)
 - Water absorption: none
 - Flammability: non-flammable
 - Ultraviolet resistance: excellent
 - Chemical resistance: excellent
 - Radiation resistance: 2 x 10⁸ rads
 - Loop tensile strength range: 200-900 lbs. (890-4005N) (see chart for sizes)
 - Fully rounded edges and smooth surfaces
 - Estimated outdoor service life of 40 years

■ Part Number	MLT1S-CP
■ RoHS Compliancy Status	Compliant
■ Part Description	Stainless steel cable tie, standard, 1" (25mm) max bundle diameter.
■ Product Type	Cable Ties
■ Material	Stainless Steel Type 304
■ Color	natural
■ UL Listed	Yes
■ Length (In.)	5.0
■ Length (mm)	127
■ Width (In.)	.18
■ Width (mm)	4.6
■ Cross Section	Standard
■ Max. Bundle Diameter (In.)	1.0
■ Max. Bundle Diameter (mm)	25

■ Min. Bundle Diameter (In.)	.50
■ Min. Bundle Diameter (mm)	12.7
■ Min. Loop Tensile Strength (Lbs.)	200
■ Min. Loop Tensile Strength (N)	890
■ Pricing Description	MLT Tie, 304 SS, Standard, 5.0" (127mm), .010" (.25mm) thk
■ Thickness (In.)	.010
■ Thickness (mm)	.25
■ Tool	GS4MT, HTMT, PPTMT, ST2MT
■ Min. Order UOM	PC
■ Min. Order Qty.	100
■ BOM Qty. (# of Pkgs.)	

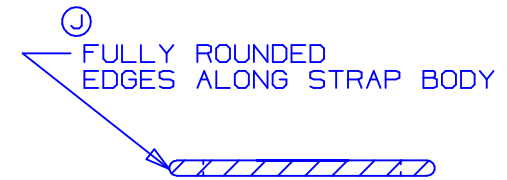


PANDUIT PART NO.	MAX BUNDLE DIA.	PACKAGE QTY	LENGTH L ±.3 [7] ④
MLT1S-CP	1" [25]	100	5.0" [127]
② MLT2S-CP	2" [51]	100	7.9" [201]
⑥ MLT2.7S-CP	2.7" [69]	100	10.2" [259]
③ MLT4S-CP	4" [102]	100	14.3" [362]
MLT6S-CP	6" [152]	100	20.5" [521]
⑤ MLT8S-CP	8" [203]	100	26.8" [679]
MLT10S-CP	10" [254]	100	33.0" [838]
MLT12S-Q	12" [304]	25	39.3" [998]
MLT14S-Q	14" [355]	25	45.5" [1156]
MLT15S-Q	15" [380]	25	49.2" [1250]



NOTES:

- ① 1.) APPLICATION TOOLS - GS4MT, PPTMT, ST2MT, ST3MT, HTMT
- 2.) MINIMUM LOOP TENSILE STRENGTH - 200 LBS (889 NEWTONS) WHEN TESTED ON A 1.5" MANDREL.
- 3.) [] DENOTES DIMENSION IN MILLIMETERS
- 4.) TOLERANCES:
 .XXX = ±.010 [.25] .XX = ±.02 [.5]
 .X = ±.03 [.8] ANGLES = ±2°
- 5.) MATERIAL: 304 STAINLESS STEEL



SECTION K - K

SCALE: 8x

REV	DATE	BY	CHK	DESCRIPTION	ECN #	PM	CUST
06	3/05	JAMB	BJO	① OLD TIP CONFIGURATION REPLACED WITH NEW TIP CONFIGURATION	12491	CCH	JJB
05	11/04	JMMR	EJD	④ REMOVED PART NO. MLT16S-Q FROM TABLE	12192	CCH	JJB
04	10/04	JAMB	EJD	⑥ ADDED PART NO. MLT16S-Q TO TABLE.	12179	CCH	JJB
03	8/04	JAMB	DPN	③ REMOVED "AISI NO.1 FULL RADIUSED" & REPLACED WITH "FULLY ROUNDED"	11907	CCH	JJB
02	8/04	JAMB	DPN	② ADDED APPLICATION TOOL "ST3MT"	11292	CCH	JJB
01	6/03	JAMB	DPN	① MIN LOOP TENSILE STRENGTH WAS 100 LBS. (445 NEWTONS) ② MAX. BUNDLE DIA. [mm] WAS [50] ③ MAX. BUNDLE DIA. [mm] WAS [101], LGTH. WAS 14.2 [361] ④ TOL. WAS ±.2 [5] ⑤ LGTH. [mm] WAS [681] ⑥ MAX. BUNDLE DIA. [mm] WAS [68] ⑦ REMOVED PART NO. MLT16S-Q	10568	CCH	JJB

PANDUIT

CORP.

TINLEY PARK, ILLINOIS

METAL LOCKING TIE
STANDARD SERIES-304 STAINLESS STEEL

DRAWN BY JAMB	CHK'D DPN	SCALE 2x	DRAWING NO. S41119
------------------	--------------	-------------	-----------------------

S41119_06