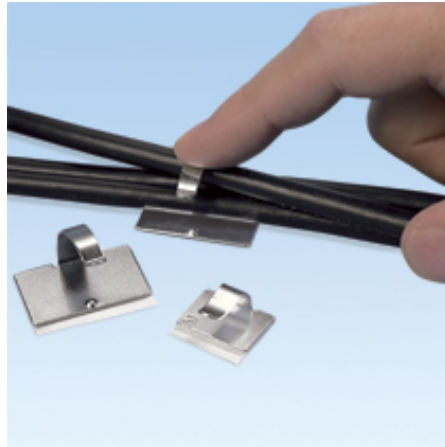




## MACC25-A-C

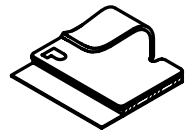
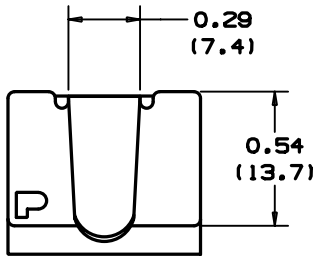


- Metal adhesive backed cord clip can be opened and closed without damage to the clip to remove or add wires quickly and easily.

■ Part Number	MACC25-A-C
■ RoHS Compliancy Status	Compliant
■ Part Description	Metal Adhesive Backed Cord Clip
■ Product Type	Mounting Device
■ Material	Zinc Plated Steel
■ Length (In.)	.77
■ Length (mm)	19.6
■ Width (In.)	.54
■ Width (mm)	13.7
■ Adhesive Type	Rubber
■ Environment	Indoors
■ Max. Bundle Diameter (In.)	.25
■ Max. Bundle Diameter (mm)	6.4
■ Mounting Method	Adhesive Backed
■ Pricing Description	Cord Clip, Metal Adh., .25" (6.4mm) Bundle
■ Min. Order UOM	PC
■ Min. Order Qty.	100
■ BOM Qty. (# of Pkgs.)	

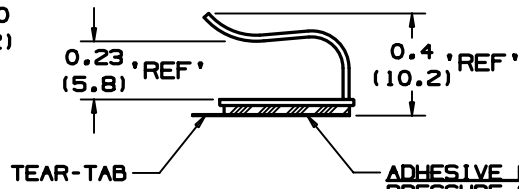
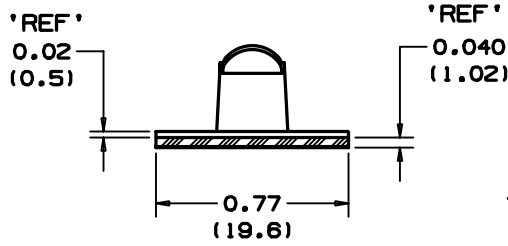
THIS COPY IS PROVIDED ON A RESTRICTED BASIS AND IS NOT TO BE USED IN ANY WAY DETRIMENTAL TO THE INTERESTS OF PANDUIT CORP.

NO WARRANTY, EXPRESSED OR IMPLIED, IS MADE BY PANDUIT WITH RESPECT TO ADHESIVE BOND PERFORMANCE. AMONG OTHER THINGS, THE CONDITIONS UNDER WHICH THESE MOUNTS MAY BE APPLIED AND/OR THE SURFACE TO WHICH THEY MAY BE APPLIED ARE BEYOND PANDUIT'S CONTROL.



ACTUAL SIZE

PANDUIT * PART NO.	MAX. BUNDLE DIAMETER inches (mm)	WEIGHT lb(g)/100 pcs.
MACC25-A	0.25 (6.3)	0.40 (178)



**ADHESIVE BACKING**  
PRESSURE SENSITIVE FOAM TAPE 0.040 (1.02) THICK WITH RUBBER ADHESIVE AND PROTECTIVE LINER. MOUNT IS DESIGNED TO SUPPORT 0.21 lb. (95.3g) MAXIMUM WEIGHT ON A CLEAN, DRY, SMOOTH, GREASE-FREE SURFACE.

NOTES:

- \* 1) SEE CURRENT PRICE SHEET FOR PART NUMBER SUFFIX DESIGNATION AND PACKAGE SIZE.
- 2) TO APPLY MOUNT: a) REMOVE PROTECTIVE LINER, b) PLACE IN DESIRED LOCATION, c) APPLY PRESSURE TO MOUNT.
- 3) MATERIAL:  
G-90 PRE-GALVANIZED COMMERCIAL GRADE LOW CARBON STEEL -- PER ASTM A 653 STEEL SHEET, ZINC COATED (GALVANIZED) BY THE HOT DIP PROCESS.

(DIMENSIONS IN PARENTHESES ARE IN METRIC.)

CHG FILENAME/LAYERS GB0239HH\_PB\_MACC25\_02



MACC25-A  
METAL ADHESIVE CORD CLIP

REV	DATE	BY	CHK	DESCRIPTION	ECN	R	CUST	SUP
2	2/19/03	JAD		REVISED MATERIAL CALLOUT, ADDED NOTE 3	GB0239HH	2		
1	5/10/02	LGG		CHG TAPE NOTE FOR SUPPORT. WAS .19(198g).	GB0239HH	1		
R	6/07/01	LGG		REPLACING ORIGINAL SS-20007	GB0239HH	R		

UNLESS OTHERWISE SPECIFIED, DIMENSIONAL TOLERANCES ARE: (.X) ±0.1(2.5) (.XX) ±0.02(0.5) (.XX) ±0.05(1.3) ANGLES ± 5°		UNLESS OTHERWISE SPECIFIED, ALL DIMENSIONS ARE GIVEN IN INCHES, THIRD ANGLE PROJECTION.	
DRAWN BY LGG	MAT'L:	SCALE NOT TO SCALE	
DATE 6/07/01	SEE NOTE 3	DRAWING NO. GB0239HH	DWG A SIZE