



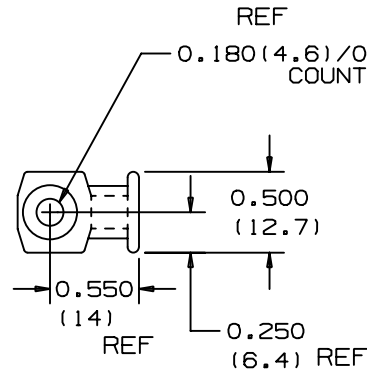
## LPMS-S8-C



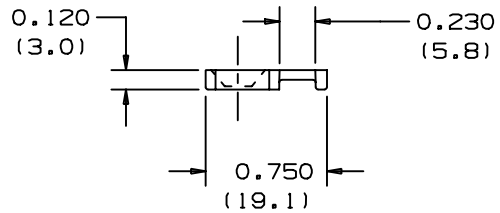
- Small overall size allows use where space is limited
- Install with a screw or rivet for a strong, secure installation
- Low profile design keeps bundle close to mounting surface where overhead space is limited
- ‡ Cable Tie Cross Section Sizes: M = Miniature, I = Intermediate, S = Standard, HS = Heavy-Standard, LH = Light-Heavy, H = Heavy, HLM = Miniature *Tak-Ty*® Hook & Loop Ties.

■ Part Number	LPMS-S8-C
■ RoHS Compliancy Status	Compliant
■ Part Description	Low Profile Cable Tie Mount
■ Product Type	Cable Tie Mounts - Screw / Rivet Mounted
■ Material	Nylon 6.6
■ Color	Natural
■ UL Recognized	E136577
■ Height (In.)	.12
■ Height (mm)	3.0
■ Length (In.)	.75
■ Length (mm)	19.1
■ Width (In.)	.50
■ Width (mm)	12.7
■ CE Compliant	CT-ACC4 / 10.96
■ Environment	Indoors
■ Flammability Rating	UL94 V-2
■ Hole Diameter (In.)	.180
■ Hole Diameter (mm)	4.6
■ Max. Bundle Diameter (mm)	4.8
■ Mounting Method	#8 (M4) Countersunk Screw
■ Pricing Description	Cable Tie Mount, Low Profile, #8 Screw (M4)
■ Screw Size	#8 (M4)
■ Screw Size Metric	M4
■ Used With Cable Ties	M, I, S
■ Min. Order UOM	PC
■ Min. Order Qty.	100

THIS COPY IS PROVIDED ON A RESTRICTED BASIS AND IS NOT TO BE USED IN ANY WAY DETRIMENTAL TO THE INTERESTS OF PANDUIT CORP.



PANDUIT PART NO. *	USE WITH ANY OF THESE CABLE TIE CROSS-SECTIONS	WEIGHT lbs/100pcs. (g)	SCREW SIZE
LPMS-S8	MINIATURE INTERMEDIATE STANDARD	0.102 (46.3)	#8 (M4)



NOTES:  
\*1)

SEE CURRENT PRICE SHEET FOR PART NUMBER SUFFIX DESIGNATION FOR PACKAGE SIZE AND COLOR.

DIMENSIONS IN PARENTHESES ARE IN METRIC UNITS.

CAD FILENAME/LAYERS

© G00239HG\_PI\_LPMS\_00

**PANDUIT**

CORP. TINLEY PARK, ILLINOIS

LOW PROFILE MOUNT LPMS-S8

UNLESS OTHERWISE SPECIFIED,  
DIMENSIONAL TOLERANCES ARE:  
(.X) ± ..... (.XXX) ± .020 (.5)  
(.XX) ± ..... ANGLES ± .....

UNLESS OTHERWISE SPECIFIED,  
ALL DIMENSIONS ARE GIVEN  
IN INCHES, THIRD ANGLE PROJECTION.

DRAWN BY  
LGG

MAT'L:

SCALE

NONE

R

6-6-01 LGG

REVISED DRAWING FROM SS-5783-A-RV 3  
TO NEW DRAWING NUMBER

G00239HG R

DATE  
6-06-01

NYLON 6/6

DRAWING NO.

G00239HG

DWG

A

REV

DATE

BY

CHK

DESCRIPTION

ECN - R

CUST

SUP

CHK'D

SIZE