



## ILT6LH-C

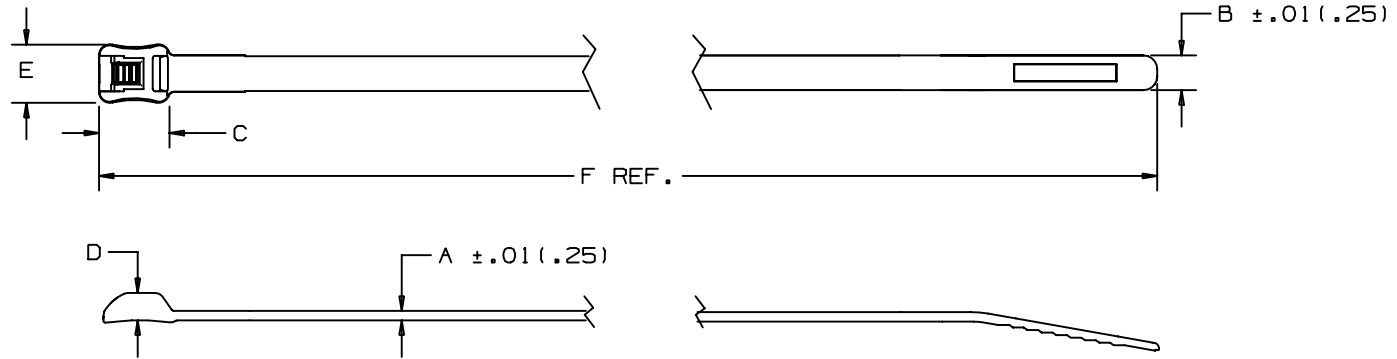


- For indoor use
- Parallel-entry cable tie that threads like a belt (180° entry)
- Low profile head avoids snags and reduces overall bundle size
- 35% lower head height than conventional 90° ties
- Parallel-entry limits exposure to sharp edges and protects workers' arms/hands
- Curved tip is easy to pick up from flat surfaces and allows faster initial threading to speed installation

■ Part Number	ILT6LH-C
■ RoHS Compliancy Status	Compliant
■ Part Description	<i>Belt-Ty™</i> In-Line Cable Tie, 21.2" Light-Heavy cross section
■ Product Type	Cable Ties
■ Material	Nylon 6.6
■ Color	Natural
■ CSA Certified	Yes
■ UL Listed (File #E56854)	Yes
■ UL Recognized (File #E56854)	Yes
■ Length (In.)	21.2
■ Length (mm)	538
■ Width (In.)	.300
■ Width (mm)	7.6
■ CE Compliant	Yes
■ Cross Section	Light-Heavy
■ Head Height (In.)	.250
■ Head Height (mm)	6.4
■ Head Width (In.)	.515
■ Head Width (mm)	13.1
■ Locking Style	Locking
■ Material Flammability Rating	UL 94V-2
■ Max. Bundle Diameter (In.)	6.00
■ Max. Bundle Diameter (mm)	152
■ Max. Continuous Use Temperature	185°F (85°C)
■ Min. Loop Tensile Strength (Lbs.)	120
■ Min. Loop Tensile Strength (N)	534

■ Pricing Description	Cable Tie, In-Line, 21.2"L (538mm), Light-Heavy, Nylon, Natural
■ Thickness (In.)	.075
■ Thickness (mm)	1.9
■ Tool	GTH, GS4H, GS4EH, PTH, STH2, ST3EH
■ Min. Order UOM	PC
■ Min. Order Qty.	100
■ BOM Qty. (# of Pkgs.)	

THIS COPY IS PROVIDED ON A RESTRICTED BASIS AND IS NOT TO BE USED IN ANY WAY DETRIMENTAL TO THE INTERESTS OF PANDUIT CORP.



PANDUIT PART NO. *	BUNDLE DIA.		A	B	C	D	E	F	MIN. LOOP TENSILE LBS. (N)	CROSS SECTION	TIP STYLE	WEIGHT lbs/100 pcs. (g)
	MIN. in (mm)	MAX. in (mm)										
ILT2S	.188 (4.8)	1.88 (47.8)	.052 (1.3)	.190 (4.8)	.389 (9.9)	.140 (3.6)	.316 (8.0)	8.30 (211)	50 (222)	STANDARD	CURVED	.284 (129)
ILT3S	.188 (4.8)	3.00 (76.2)	.052 (1.3)	.190 (4.8)	.389 (9.9)	.140 (3.6)	.316 (8.0)	11.5 (292)	50 (222)	STANDARD	CURVED	.385 (175)
ILT4S	.188 (4.8)	4.00 (101.6)	.052 (1.3)	.190 (4.8)	.389 (9.9)	.140 (3.6)	.316 (8.0)	14.7 (373)	50 (222)	STANDARD	CURVED	.490 (222)
ILT4LH	.200 (5.1)	4.00 (101.6)	.075 (1.9)	.300 (7.6)	.600 (15.2)	.250 (6.4)	.515 (13.1)	14.8 (376)	120 (534)	LIGHT HEAVY	CURVED	1.132 (514)
ILT6LH	.200 (5.1)	6.00 (152.4)	.075 (1.9)	.300 (7.6)	.600 (15.2)	.250 (6.4)	.515 (13.1)	21.2 (538)	120 (534)	LIGHT HEAVY	CURVED	1.610 (731)

DIMENSIONS IN PARENTHESES ARE IN METRIC UNITS

PANDUIT CORP. TINLEY PARK, ILLINOIS

BELT-TY INLINE-TIE CABLE TIES  
ILT SERIES

UNLESS OTHERWISE SPECIFIED,  
DIMENSIONAL TOLERANCES ARE:  
(.X) ± ---- (.XXX) ±.020(.51)  
(.XX) ±.02(.5) ANGLES ± ----

UNLESS OTHERWISE SPECIFIED,  
ALL DIMENSIONS ARE GIVEN  
IN INCHES, THIRD ANGLE PROJECTION.

DRAWN BY  
CJW

MAT'L:

SCALE NONE

7 8/10/04 MJVE

.515 WAS .475 ON ILT4/6LH DIM E

27217 7

DATE  
6-9-99

DRAWING NO.  
SS-27217

DWG  
A  
SIZE

REV DATE BY CHK

DESCRIPTION

ECN - R

CUST

SUP

CHK'D  
JKG