



H100X034F1T



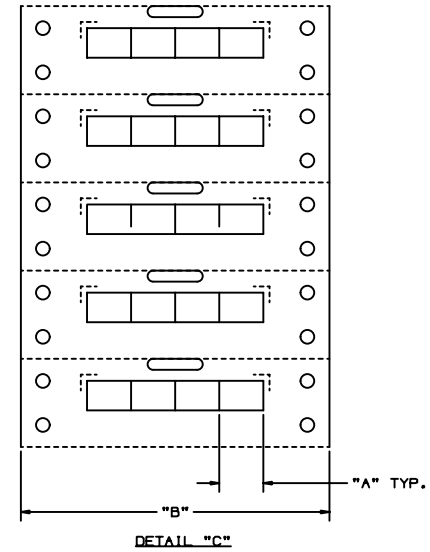
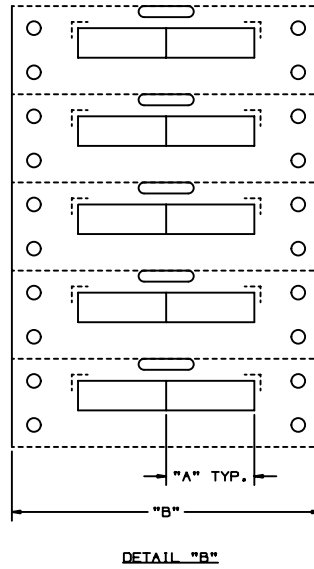
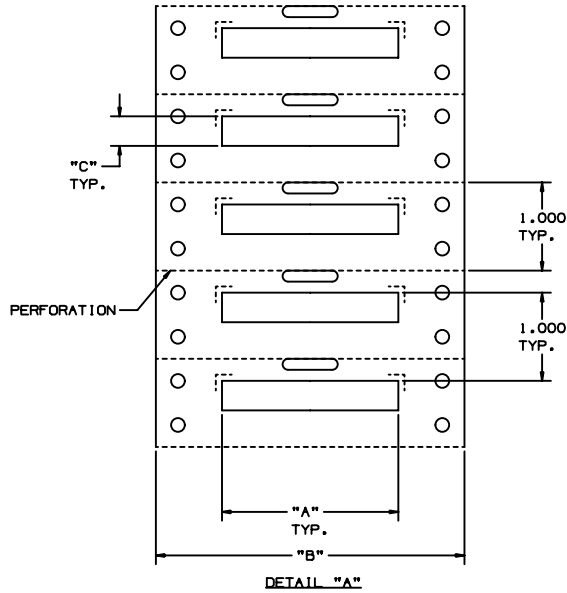
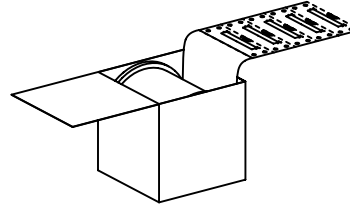
- Labels offer crisp, clear legends with superior legibility
- Meets UL Standard 224 for flammability and UL Standard 2043 suitable for use in air handling spaces
- Shrink ratio 3:1
- Pre-cut flattened polyolefin is both thermal transfer and dot matrix printable and supplied roll mounted on plastic carrier
- *PANDUIT* labeling software packages include all label formats for quick and easy label production

■ Part Number	H100X034F1T
■ RoHS Compliancy Status	Compliant
■ Note	H100X034F1T replaces LHS18W2
■ Part Description	White, 3/16" diameter polyolefin, 1000/roll.
■ Material	3:1 Flattened Polyolefin
■ Color	White
■ Diameter (In.)	.19
■ Diameter (mm)	4.83
■ Length (In.)	.34
■ Length (mm)	8.64
■ Width (In.)	1.00
■ Width (mm)	25.40
■ Markers Per Roll	1000
■ Markers Per Row	2
■ Max. Wire O.D. (In.)	.19
■ Max. Wire O.D. (mm)	4.83
■ Min. Cable O.D. (In.)	.06
■ Min. Cable O.D. (mm)	1.52
■ Nominal Cable O.D. (In.)	.06 - .18
■ Nominal Cable O.D. (mm)	1.52 - 4.83
■ Pricing Description	ThermTrans, Heatshrink Tubing, Polyolefin, 1.00" W x .34" H, White, 1000 pieces
■ Min. Order UOM	RL
■ Min. Order Qty.	1
■ BOM Qty. (# of Pkgs.)	

THIS COPY IS PROVIDED ON A RESTRICTED BASIS AND IS NOT TO BE USED IN ANY WAY DETRIMENTAL TO THE INTERESTS OF PANDUIT CORP.



FINISHED PRODUCT
UNWIND DIRECTION
AWAY FROM LID OF BOX



PART NUMBER	SEE DETAIL	"A"	"B"	"C"	MARKER ACROSS	TUBING COLOR
H200X034F1T	A	2.00	3.50	0.335	1	WHITE
H100X034F1T	B	1.00	3.50	0.335	2	WHITE
H050X034F1T	C	0.50	3.50	0.335	4	WHITE
H150X034F1T	A	1.50	3.50	0.335	1	WHITE
H075X034F1T	B	0.75	3.50	0.335	2	WHITE
H200X034F2T	A	2.00	3.50	0.335	1	YELLOW
H100X034F2T	B	1.00	3.50	0.335	2	YELLOW
H050X034F2T	C	0.50	3.50	0.335	4	YELLOW
H200X034F1T-B	A	2.00	3.50	0.335	1	WHITE
H100X034F1T-B	B	1.00	3.50	0.335	2	WHITE
H050X034F1T-B	C	0.50	3.50	0.335	4	WHITE

NOTE:
1. SEE MFG. DRAWING NO: A61183.

100472FK_C10220_HNUMX034F×T_00.PRT PANDUIT CORP. TINLEY PARK, ILLINOIS H***X034F** OPTIMUM COMPUTER PRINTABLE HEAT SHRINK MARKERS UNLESS OTHERWISE SPECIFIED, DIMENSIONAL TOLERANCES ARE: (XXX) ± .005 (XXX) ± .010 (XXX) ± .031 ANGLES ±									
ORDER BY: RVU DATE: 9-29-04 DWS					SCALE: NTS DRAWING NO: C10220 DWG: C REV:				
O 2-24-04 RVU DRAWING RELEASE. 0000 R					GMHS				
REV	DATE	BY	CHK	DESCRIPTION	ECN	R	CUST	SLP	QMSH