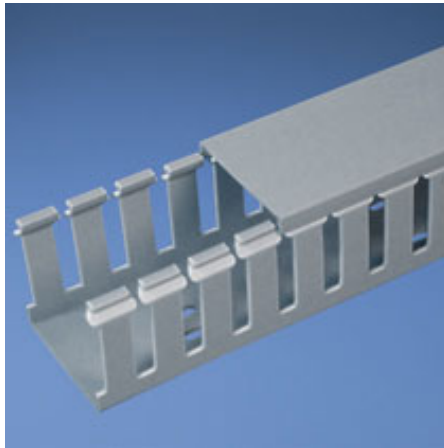




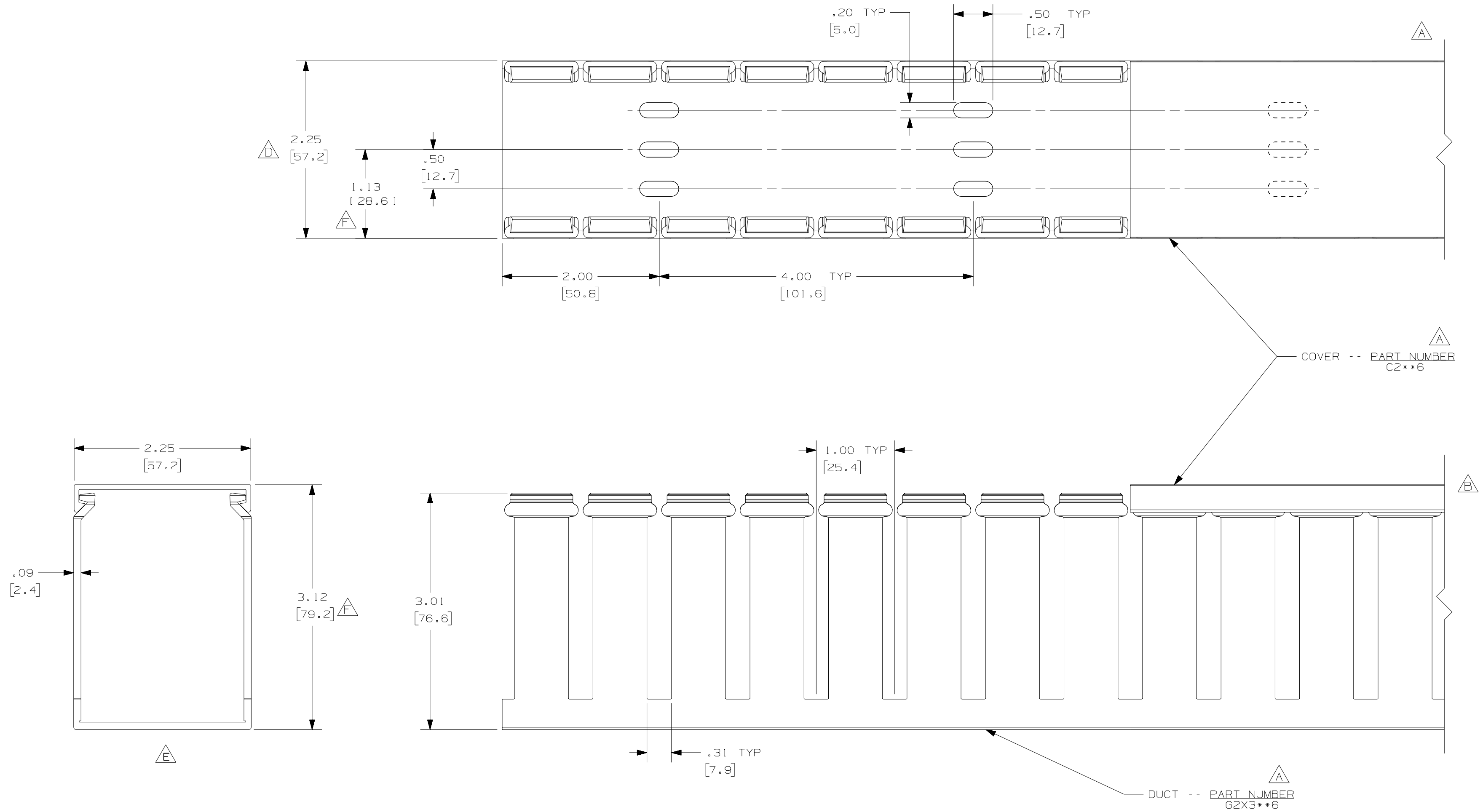
G2X3LG6



- Choose from 36 sizes of *PANDUIT*® Type G Wiring Duct from 0.5 "x 0.5" up to 6.0" x 4.0" in popular colors. Used for general purpose control panel wiring and to route and protect wiring in communication closets. The non-slip cover conceals all wiring and is easy to install. The duct and cover form a flush sidewall providing increased capacity and improved aesthetics.
- **Specifications**
 - Made of lead-free PVC
 - UL Recognized continuous use temperature: 122 °F (50°C)
 - UL94 Flammability Rating of V-0
 - Conforms with NFPA 79-2002 section 14.3.1 requirement for flame retardant material
 - Provided with mounting holes
- **Features and Benefits**
 - Wide finger/slot design provides greater sidewall rigidity and can be used with a wide range of wire bundle sizes
 - *PANDUIT*® exclusive rounded edges protects hands and wiring/cabling from abrasion
 - Non-slip cover stays in place during shipment, vibration and when in vertical orientation, eliminating rework
 - Flush cover design holds 10-12% more wires than traditional duct designs
 - Double scoreline allows quick modification for larger cabling bundles saving installation time leading to a lower installed cost
 - Specially formulated lead-free material eliminates health concerns associated with PVC that contains lead
 - Restricted slot design retains wire in slot for fast, easy wire installation or removal
- Base and cover sold separately.

• Part Number	G2X3LG6
• RoHS Compliancy Status	Compliant
• Part Description	Wide finger, slotted wiring duct.
• Material	Lead-Free PVC
• Color	Light Gray
• CSA Certified	Yes
• UL Recognized (File No. E147128)	Yes
• Length (ft.)	6
• CE Marking	Yes
• Duct Size W x H (In.)	2.25 x 3.12
• Duct Size W x H (mm)	57.2 x 79.2
• Mounting Method	Standard Mounting Holes
• Pricing Description	Slotted Duct, PVC, 50.8mm X 76.2mm X 6', Light Grey
• Slot Width (In.)	.31
• Slot Width (mm)	7.9

▪ Cover Part Number	C2LG6
▪ Min. Order UOM	FT
▪ Min. Order Qty.	6
▪ BOM Qty. (# of Pkgs.)	



△△

NOTES:

1. ALL DIMENSIONS ARE REFERENCE ONLY.
2. DIMENSIONS IN PARENTHESIS ARE METRIC.
3. THE ** DENOTE COLOR.
4. DUCT AND COVER ARE AVAILABLE IN 6 FT [1828.8] LENGTHS.

REV	DATE	BY	CHK	DESCRIPTION
1	5/6/04	JCSTMKE		B. CHANGED VIEW A. ADDED TOP VIEW, NOTES, AND LABELS
R	3/5/03	JCST JGG		DRAWING RELEASED
2	7/6/07	JCSTMKE		E. DELETED DIMENSION D. ADDED DIMENSION
--	-----	---	---	C. CHANGED DRAWING SIZE
--	-----	---	---	G. ADDED LENGTH NOTE F. CORRECTED DIMENSION

CAD FILENAME/LAYERS		D1100005_DC_00C	
PANDUIT CORP. TINLEY PARK, ILLINOIS			
WIRING DUCT - TYPE G DUCT WITH COVER 2 X 3 MARKETING DRAWING			
DRWN BY JCST	MAT'L: PVC	SCALE FULL	DWG C
DATE 3/5/03	CHECKED BY JGG	DRAWING NO. 36897-706	SIZE C

△