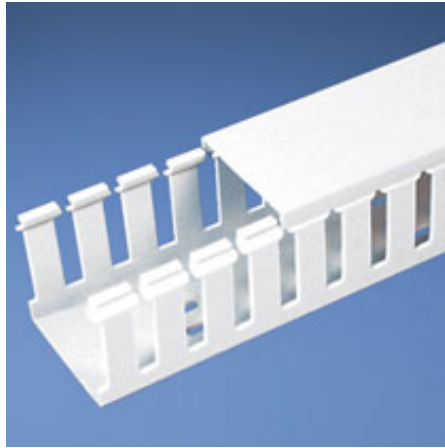




## G2X2WH6-A



- Choose from 36 sizes of *PANDUIT*® Type G Wiring Duct from 0.5 "x 0.5" up to 6" x 4" in popular colors. Used for general purpose control panel wiring and to route and protect wiring in communication closets. The non-slip cover conceals all wiring and is easy to install. The duct and cover form a flush sidewall providing increased capacity and improved aesthetics.

### • Specifications

- Made of lead-free PVC
- UL Recognized continuous use temperature: 122 °F (50°C)
- UL94 Flammability Rating of V-0
- Conforms with NFPA 79-2002 section 14.3.1 requirement for flame retardant material
- Provided with mounting holes

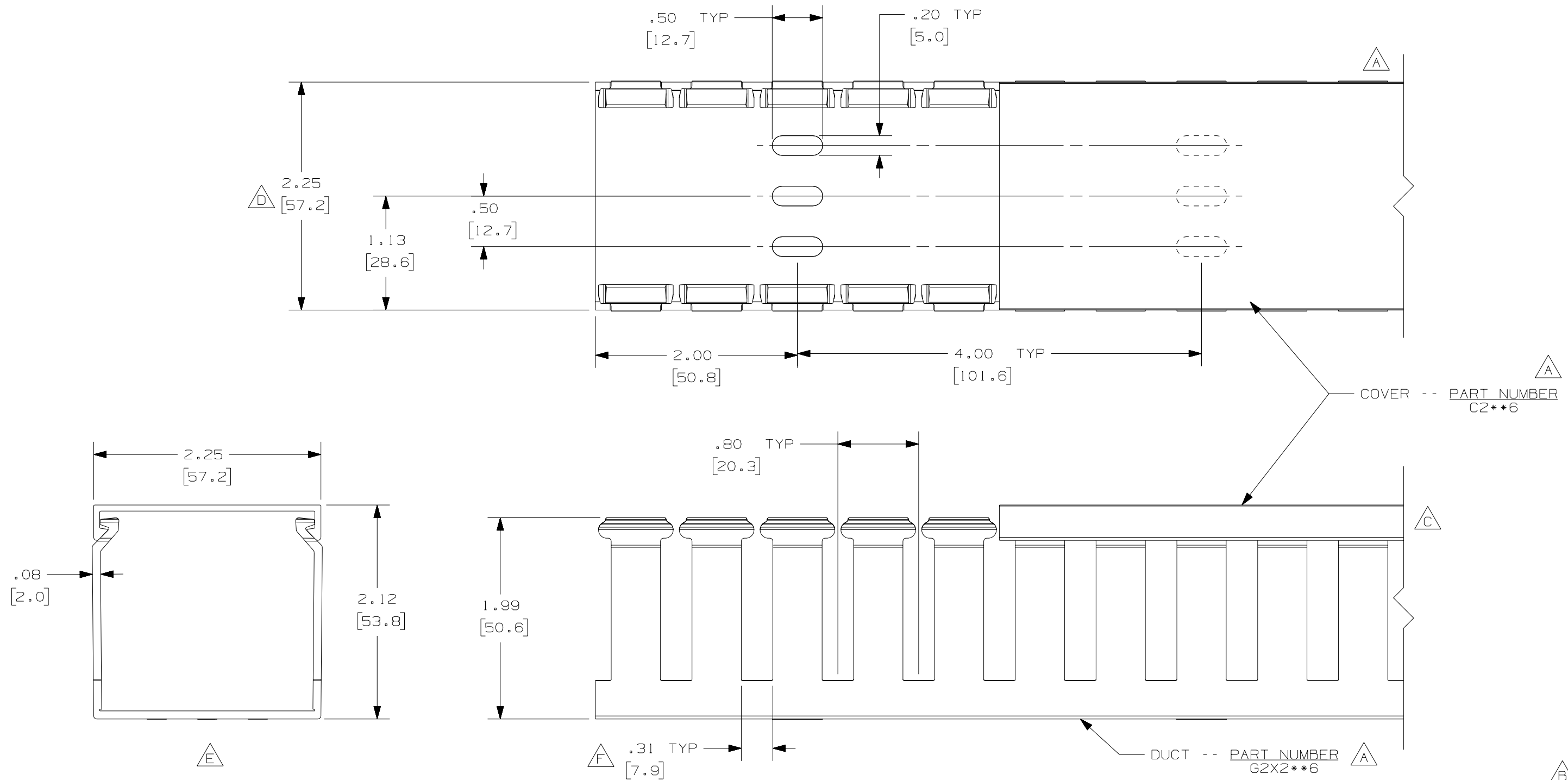
### • Features and Benefits

- Wide finger/slot design provides greater sidewall rigidity and can be used with a wide range of wire bundle sizes
  - *PANDUIT*® exclusive rounded edges protects hands and wiring/cabling from abrasion
  - Non-slip cover stays in place during shipment, vibration and when in vertical orientation, eliminating rework
  - Flush cover design holds 10-12% more wires than traditional duct designs
  - Double scoreline allows quick modification for larger cabling bundles saving installation time leading to a lower installed cost
  - Specially formulated lead-free material eliminates health concerns associated with PVC that contains lead
  - Restricted slot design retains wire in slot for fast, easy wire installation or removal
- Base and cover sold separately.

▪ Part Number	G2X2WH6-A
▪ RoHS Compliancy Status	Compliant
▪ Part Description	Wide finger, slotted wiring duct.
▪ Material	Lead-Free PVC
▪ Color	White
▪ CSA Certified	Yes
▪ UL Recognized (File No. E147128)	Yes
▪ Length (ft.)	6
▪ Adhesive Mounting Tape	Yes
▪ CE Marking	Yes
▪ Duct Size W x H (In.)	2.25 x 2.12
▪ Duct Size W x H (mm)	57.2 x 53.8
▪ Mounting Method	Standard Mounting Holes with Adhesive
▪ Pricing Description	Slotted Duct, PVC,2"X2"X6',ADH,WHT

▪ Slot Width (In.)	0.31
▪ Slot Width (mm)	7.9
▪ Cover Part Number	C2WH6
▪ Min. Order UOM	FT
▪ Min. Order Qty.	6
▪ BOM Qty. (# of Pkgs.)	

THIS COPY IS PROVIDED ON A RESTRICTED BASIS AND IS NOT TO BE USED IN ANY WAY DETRIMENTAL TO THE INTERESTS OF PANDUIT CORP.



**A** **G**

NOTE.

1. ALL DIMENSIONS ARE REFERENCE ONLY.
2. DIMENSIONS IN PARENTHESES ARE METRIC.
3. THE \*\* DENOTE COLOR.
4. DUCT AND COVER ARE AVAILABLE IN 6 FT [1828.8] LENGTHS.

REV	DATE	BY	CHK	DESCRIPTION
2		JCST	MKBE	G. ADDED LENGTH NOTE F. CORRECTED PICK POINT / DIMENSION
1	5/7/04	JCST	MKBE	E. DELETED DIMENSION D. ADDED DIMENSION
R	2/17/03	JCST	JGG	B. CHANGED DRAWING SIZE C. CHANGED VIEW A. ADDED TOP VIEW, LABELS, AND NOTE
				DRAWING RELEASED

CAD FILENAME/LAYERS		D11000QR_DC_00C	
<b>PANDUIT</b> CORP. TINLEY PARK, ILLINOIS			
WIRING DUCT - TYPE G WITH COVER 2 x 2 MARKETING DRAWING			
DRAWN BY JCST	MAT'L: PVC	SCALE FULL	DWG B
DATE 2/17/03		DRAWING NO. 36897-705	SIZE B
CHECKED BY JGG			