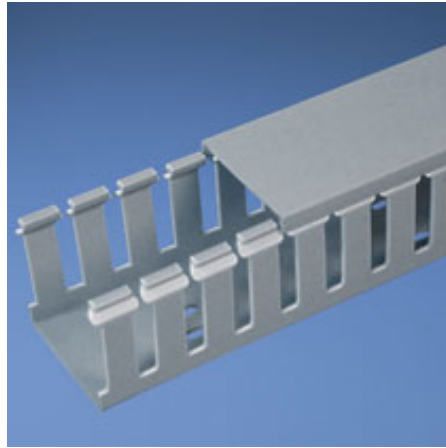




## G1X3LG6-A

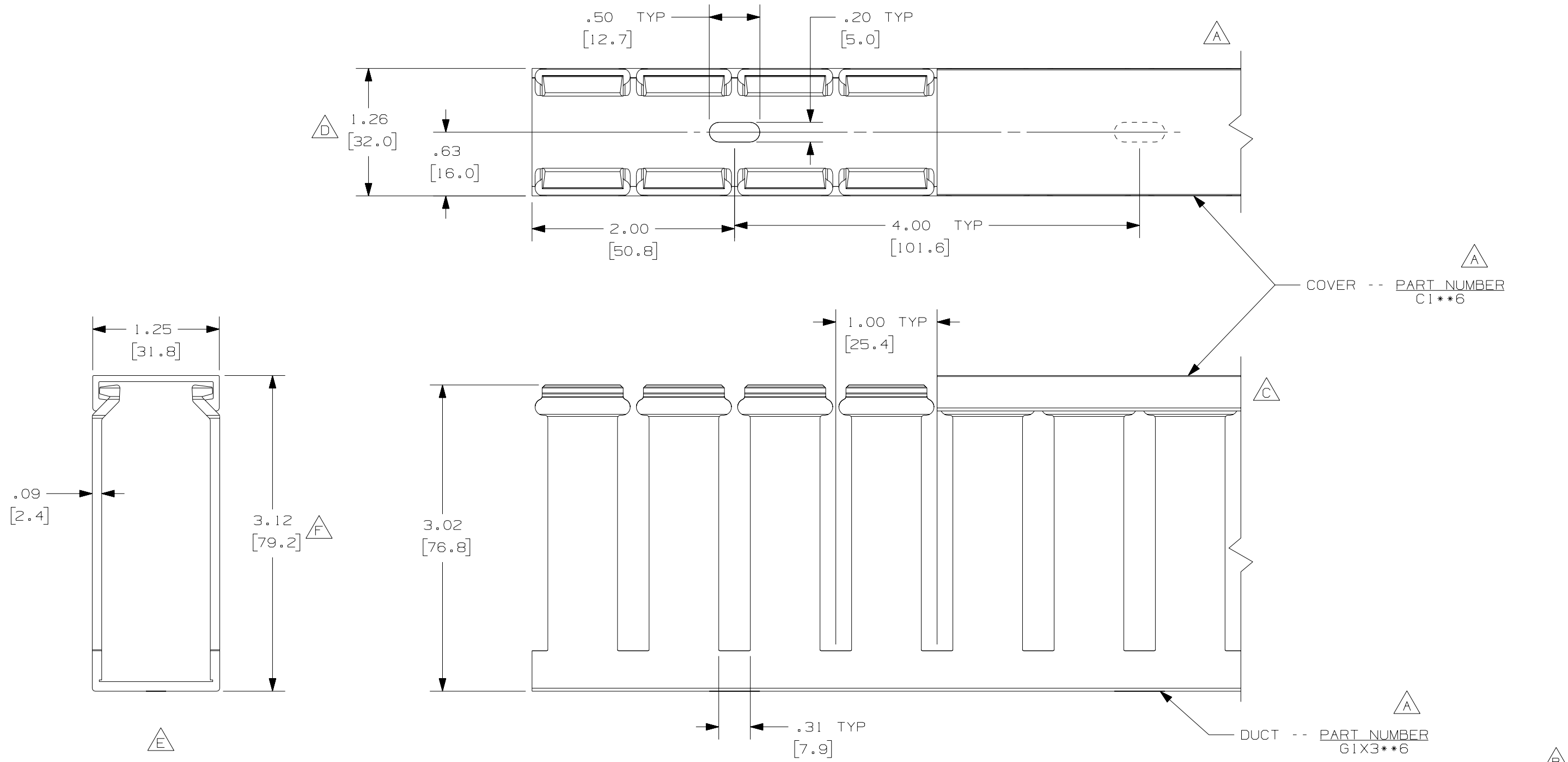


- Choose from 36 sizes of *PANDUIT*® Type G Wiring Duct from 0.5 "x 0.5" up to 6.0" x 4.0" in popular colors. Used for general purpose control panel wiring and to route and protect wiring in communication closets. The non-slip cover conceals all wiring and is easy to install. The duct and cover form a flush sidewall providing increased capacity and improved aesthetics.
- **Specifications**
  - Made of lead-free PVC
  - UL Recognized continuous use temperature: 122 °F (50°C)
  - UL94 Flammability Rating of V-0
  - Conforms with NFPA 79-2002 section 14.3.1 requirement for flame retardant material
  - Provided with mounting holes
- **Features and Benefits**
  - Wide finger/slot design provides greater sidewall rigidity and can be used with a wide range of wire bundle sizes
  - *PANDUIT*® exclusive rounded edges protects hands and wiring/cabling from abrasion
  - Non-slip cover stays in place during shipment, vibration and when in vertical orientation, eliminating rework
  - Flush cover design holds 10-12% more wires than traditional duct designs
  - Double scoreline allows quick modification for larger cabling bundles saving installation time leading to a lower installed cost
  - Specially formulated lead-free material eliminates health concerns associated with PVC that contains lead
  - Restricted slot design retains wire in slot for fast, easy wire installation or removal
- Base and cover sold separately.

■ Part Number	G1X3LG6-A
■ RoHS Compliancy Status	Compliant
■ Part Description	Wide finger, slotted wiring duct.
■ Material	Lead-Free PVC
■ Color	Light Gray
■ CSA Certified	Yes
■ UL Recognized (File No. E147128)	Yes
■ Length (ft.)	6
■ Adhesive Mounting Tape	Yes
■ CE Marking	Yes
■ Duct Size W x H (In.)	1.26 x 3.12
■ Duct Size W x H (mm)	32.0 x 79.2
■ Mounting Method	Standard Mounting Holes with Adhesive
■ Pricing Description	Slotted Duct, PVC, 1"X3"X6',ADH,LGRY
■ Slot Width (In.)	.31

▪ Slot Width (mm)	7.9
▪ Cover Part Number	C1LG6
▪ Min. Order UOM	FT
▪ Min. Order Qty.	6
▪ BOM Qty. (# of Pkgs.)	

THIS COPY IS PROVIDED ON A RESTRICTED BASIS AND IS NOT TO BE USED IN ANY WAY DETRIMENTAL TO THE INTERESTS OF PANDUIT CORP.



△ △ G

NOTE.

1. ALL DIMENSIONS ARE REFERENCE ONLY.
2. DIMENSIONS IN PARENTHESES ARE METRIC.
3. THE \*\* DENOTE COLOR.
4. DUCT AND COVER ARE AVAILABLE IN 6 FT [1828.8] LENGTHS.

REV	DATE	BY	CHK	DESCRIPTION
--	-----	---	---	G. ADDED LENGTH NOTE F. CORRECTED DIMENSION
2	7/6/07	JCST	MKBE	E. DELETED DIMENSION D. ADDED DIMENSION
1	4/29/04	JCST	MKBE	B. CHANGED DRAWING SIZE A. ADDED TOP VIEW, LABELS, AND NOTE
R	3/5/03	JCST	JGG	DRAWING RELEASED

CAD FILENAME/LAYERS: D11000Q1\_DC/00C

**PANDUIT** CORP. TINLEY PARK, ILLINOIS  
 WIRING DUCT - TYPE G WITH COVER  
 1 X 3  
 MARKETING DRAWING

DRAWN BY JCST	MAT'L: PVC	SCALE FULL	DWG B
DATE 3/5/03		DRAWING NO. 36897-696	SIZE
CHECKED BY JGG			