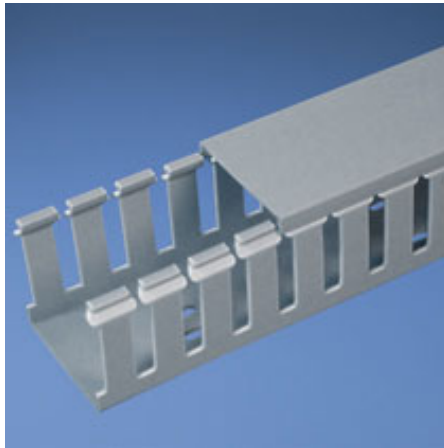




## G1X2LG6-A

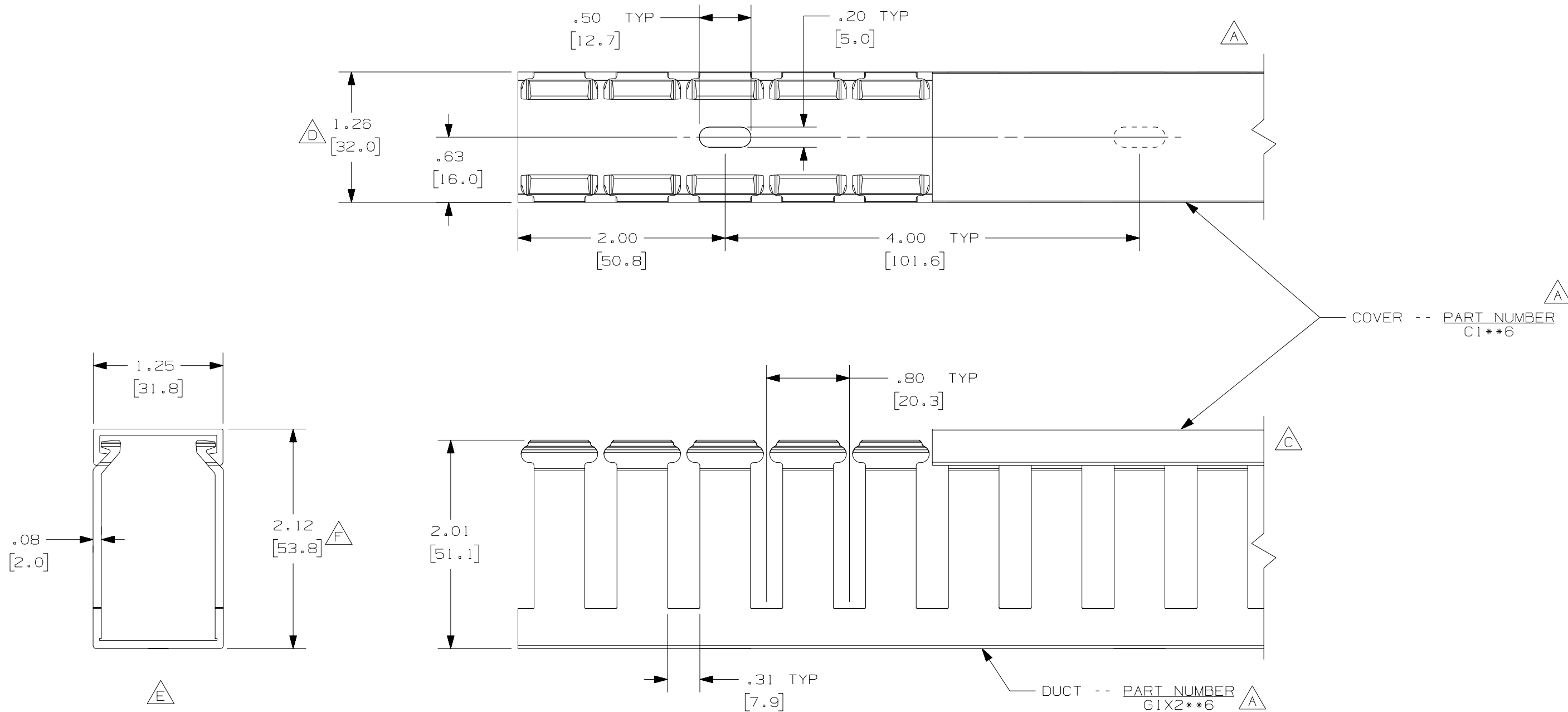


- Choose from 36 sizes of *PANDUIT*® Type G Wiring Duct from 0.5 "x 0.5" up to 6.0" x 4.0" in popular colors. Used for general purpose control panel wiring and to route and protect wiring in communication closets. The non-slip cover conceals all wiring and is easy to install. The duct and cover form a flush sidewall providing increased capacity and improved aesthetics.
- **Specifications**
  - Made of lead-free PVC
  - UL Recognized continuous use temperature: 122 °F (50°C)
  - UL94 Flammability Rating of V-0
  - Conforms with NFPA 79-2002 section 14.3.1 requirement for flame retardant material
  - Provided with mounting holes
- **Features and Benefits**
  - Wide finger/slot design provides greater sidewall rigidity and can be used with a wide range of wire bundle sizes
  - *PANDUIT*® exclusive rounded edges protects hands and wiring/cabling from abrasion
  - Non-slip cover stays in place during shipment, vibration and when in vertical orientation, eliminating rework
  - Flush cover design holds 10-12% more wires than traditional duct designs
  - Double scoreline allows quick modification for larger cabling bundles saving installation time leading to a lower installed cost
  - Specially formulated lead-free material eliminates health concerns associated with PVC that contains lead
  - Restricted slot design retains wire in slot for fast, easy wire installation or removal
- Base and cover sold separately.

|                                    |                                       |
|------------------------------------|---------------------------------------|
| ■ Part Number                      | G1X2LG6-A                             |
| ■ RoHS Compliancy Status           | Compliant                             |
| ■ Part Description                 | Wide finger, slotted wiring duct.     |
| ■ Material                         | Lead-Free PVC                         |
| ■ Color                            | Light Gray                            |
| ■ CSA Certified                    | Yes                                   |
| ■ UL Recognized (File No. E147128) | Yes                                   |
| ■ Length (ft.)                     | 6                                     |
| ■ Adhesive Mounting Tape           | Yes                                   |
| ■ CE Marking                       | Yes                                   |
| ■ Duct Size W x H (In.)            | 1.26 x 2.12                           |
| ■ Duct Size W x H (mm)             | 32.0 x 53.8                           |
| ■ Mounting Method                  | Standard Mounting Holes with Adhesive |
| ■ Pricing Description              | Slotted Duct, PVC, 1"X2"X6',ADH,LGRY  |
| ■ Slot Width (In.)                 | .31                                   |

|                         |       |
|-------------------------|-------|
| ▪ Slot Width (mm)       | 7.9   |
| ▪ Cover Part Number     | C1LG6 |
| ▪ Min. Order UOM        | FT    |
| ▪ Min. Order Qty.       | 6     |
| ▪ BOM Qty. (# of Pkgs.) |       |

THIS COPY IS PROVIDED ON A RESTRICTED BASIS AND IS NOT TO BE USED IN ANY WAY DETRIMENTAL TO THE INTERESTS OF PANDUIT CORP.



**A**  
**G** NOTE.

1. ALL DIMENSIONS ARE REFERENCE ONLY.
2. DIMENSIONS IN PARENTHESES ARE METRIC.
3. THE \*\* DENOTE COLOR.
4. DUCT AND COVER ARE AVAILABLE IN 6 FT [1828.8] LENGTHS.

| REV | DATE    | BY   | CHK  | DESCRIPTION   |
|-----|---------|------|------|---|
| --  | -----   | ---- | ---- | G. ADDED LENGTH NOTE<br>F. CORRECTED DIMENSION                                    |
| 2   | 7/6/07  | JCST | MKBE | E. REMOVED DIMENSION<br>D. ADDED DIMENSION  |
| 1   | 4/29/04 | JCST | MKBE | B. CHANGED DRAWING SIZE<br>C. CHANGED VIEW<br>A. ADDED TOP VIEW, LABELS, AND NOTE |
| R   | 3/18/02 | JCST | JGG  | DRAWING RELEASED  |

|   |                   |                          |           |
|---|-------------------|--------------------------|-----------|
| CAD FILENAME/LAYERS   |                   | D11000QH_DC/01A          |           |
| <b>PANDUIT</b> CORP. TINLEY PARK, ILLINOIS                    |                   |                          |           |
| WIRING DUCT - TYPE G WITH COVER<br>1 x 2<br>MARKETING DRAWING |                   |                          |           |
| DRAWN BY<br>JCST  | MAT'L:<br>PVC     | SCALE<br>FULL            | DWG<br>B  |
| DATE<br>3/18/02   | CHECKED BY<br>JGG | DRAWING NO.<br>36897-678 | SIZE<br>B |