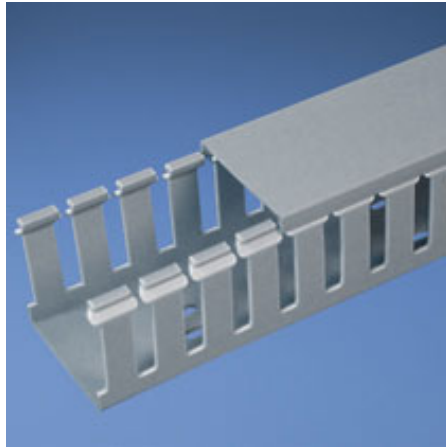




G1.5X2LG6-A

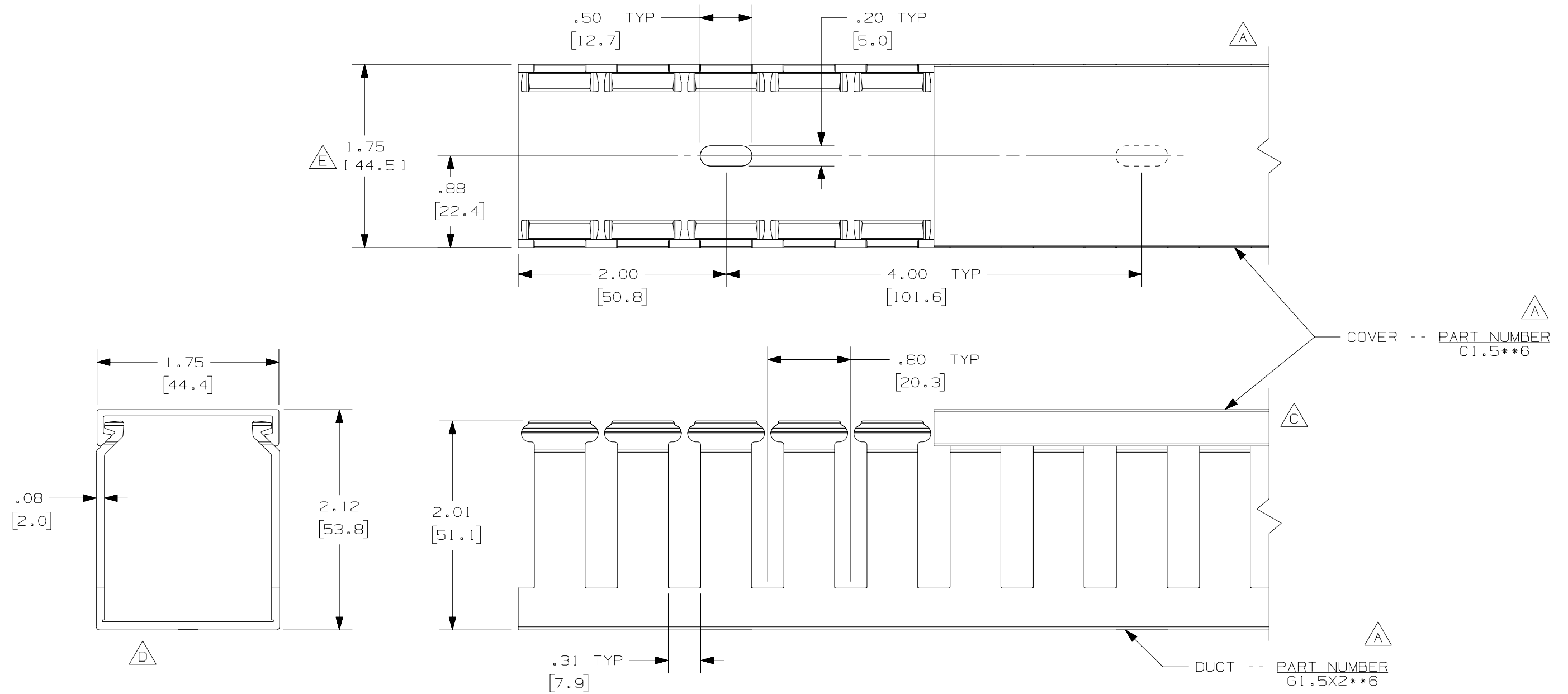


- Choose from 36 sizes of *PANDUIT*® Type G Wiring Duct from 0.5 "x 0.5" up to 6.0" x 4.0" in popular colors. Used for general purpose control panel wiring and to route and protect wiring in communication closets. The non-slip cover conceals all wiring and is easy to install. The duct and cover form a flush sidewall providing increased capacity and improved aesthetics.
- **Specifications**
 - Made of lead-free PVC
 - UL Recognized continuous use temperature: 122 °F (50°C)
 - UL94 Flammability Rating of V-0
 - Conforms with NFPA 79-2002 section 14.3.1 requirement for flame retardant material
 - Provided with mounting holes
- **Features and Benefits**
 - Wide finger/slot design provides greater sidewall rigidity and can be used with a wide range of wire bundle sizes
 - *PANDUIT*® exclusive rounded edges protects hands and wiring/cabling from abrasion
 - Non-slip cover stays in place during shipment, vibration and when in vertical orientation, eliminating rework
 - Flush cover design holds 10-12% more wires than traditional duct designs
 - Double scoreline allows quick modification for larger cabling bundles saving installation time leading to a lower installed cost
 - Specially formulated lead-free material eliminates health concerns associated with PVC that contains lead
 - Restricted slot design retains wire in slot for fast, easy wire installation or removal
- Base and cover sold separately.

| | |
|------------------------------------|--|
| ■ Part Number | G1.5X2LG6-A |
| ■ RoHS Compliancy Status | Compliant |
| ■ Part Description | Wide finger, slotted wiring duct. |
| ■ Material | Lead-Free PVC |
| ■ Color | Light Gray |
| ■ CSA Certified | Yes |
| ■ UL Recognized (File No. E147128) | Yes |
| ■ Length (ft.) | 6 |
| ■ Adhesive Mounting Tape | Yes |
| ■ CE Marking | Yes |
| ■ Duct Size W x H (In.) | 1.75 x 2.12 |
| ■ Duct Size W x H (mm) | 44.5 x 53.8 |
| ■ Mounting Method | Standard Mounting Holes with Adhesive |
| ■ Pricing Description | Slotted Duct, PVC, 1.5"X2"X6',ADH,LGRY |
| ■ Slot Width (In.) | .31 |

| | |
|-------------------------|---------|
| ▪ Slot Width (mm) | 7.9 |
| ▪ Cover Part Number | C1.5LG6 |
| ▪ Min. Order UOM | FT |
| ▪ Min. Order Qty. | 6 |
| ▪ BOM Qty. (# of Pkgs.) | |

THIS COPY IS PROVIDED ON A RESTRICTED BASIS AND IS NOT TO BE USED IN ANY WAY DETRIMENTAL TO THE INTERESTS OF PANDUIT CORP.



△ △

NOTE.

1. ALL DIMENSIONS ARE REFERENCE ONLY.
2. DIMENSIONS IN PARENTHESES ARE METRIC.
3. THE ** DENOTE COLOR.
4. DUCT AND COVER ARE AVAILABLE IN 6 FT [1828.8] LENGTHS

| REV | DATE | BY | CHK | DESCRIPTION |
|-----|---------|------|------|--|
| -- | ----- | --- | --- | F. ADDED LENGTH |
| 2 | 7-6-07 | JCST | MKBE | E. ADDED DIMENSION D. DELETED DIMENSION |
| 1 | 5-6-04 | JCST | MKBE | B. CHANGED DRAWING SIZE A. ADDED TOP VIEW, LABELS, AND NOTE |
| R | 2-19-03 | JCST | JGG | DRAWING RELEASED |

| | | | |
|---|-------------------|--------------------------|-----------|
| CAD FILENAME/LAYERS | | D11000QM_DC_00C | |
| PANDUIT CORP. TINLEY PARK, ILLINOIS | | | |
| WIRING DUCT - TYPE G WITH COVER 1.5 X 2 MARKETING DRAWING | | | |
| DRAWN BY JCST | MAT'L: PVC | SCALE FULL | DWG B |
| DATE 2-19-03 | CHECKED BY JGG | DRAWING NO. 36897-700 | SIZE B |

△