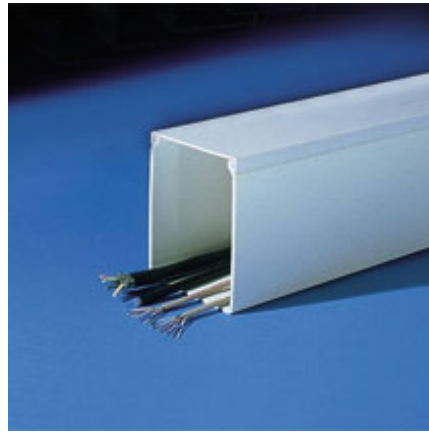


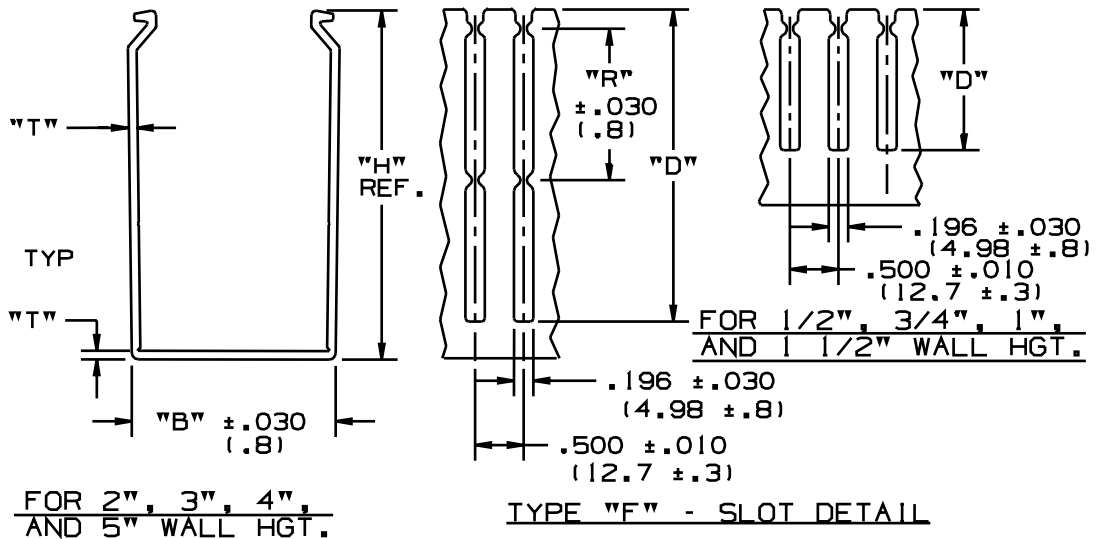
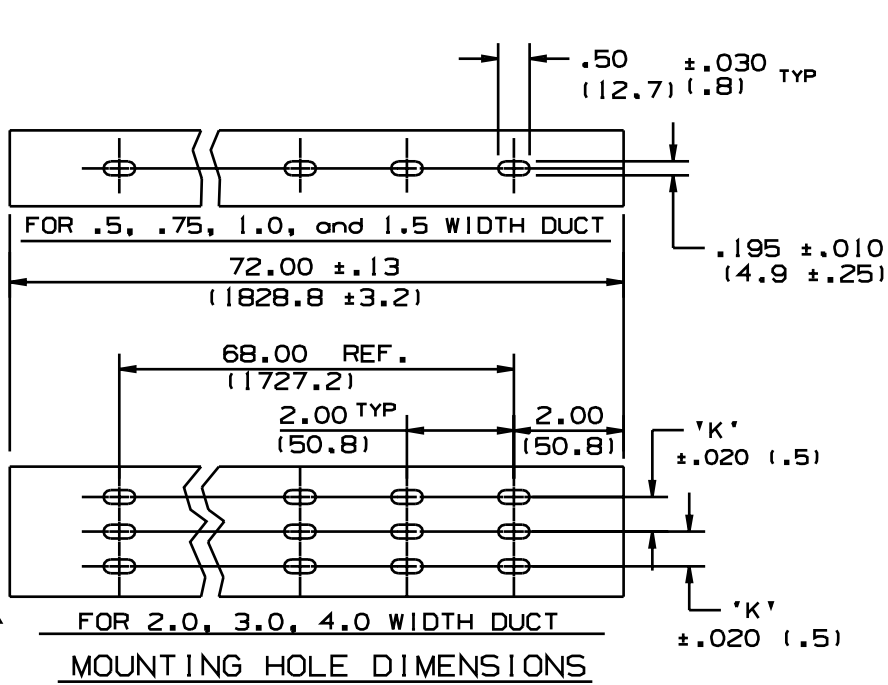


FS2X2LG6



- Choose from 34 sizes of *PANDUIT* Type FS Solid Wall Raceway from 0.5" x 0.5" up to 6.0" x 4.0". The PVC material can be easily cut for breakouts and junctions. The non-slip cover keeps all wiring in place and is easy to install. The cover and base form a flush sidewall for increased capacity and improved aesthetics. It is excellent for use in non-plenum applications including under floor and telecommunication closet installations.
- **Specifications**
 - Made of lead-free PVC
 - UL Recognized for continuous use temperatures up to 122°F (50°C)
 - UL94 Flammability Rating V-0
 - Supplied with mounting holes
- **Features and Benefits**
 - Solid wall design provides a more aesthetically pleasing solution for applications that do not require frequent cable breakouts
 - Flush cover design holds 10-12% more wires than traditional duct designs
 - Base scoreline allows full wire carrying capacity at wiring duct junctions such as tees and corners
 - Non-slip cover stays in place during shipment, vibration and when in a vertical orientation, eliminating rework
 - Specially formulated lead-free material eliminates health concerns associated with PVC which contains lead
- Base and cover sold separately.

▪ Part Number	FS2X2LG6
▪ RoHS Compliancy Status	Compliant
▪ Part Description	Solid Wall Raceway used in non-plenum applications.
▪ Material	Lead-free PVC
▪ Color	Light Gray
▪ CSA Certified	Yes
▪ UL Recognized (File No. E147128)	Yes
▪ Length (ft.)	6
▪ CE Marking	Yes
▪ Duct Size W x H (In.)	2.25 x 2.12
▪ Duct Size W x H (mm)	57.2 x 53.8
▪ Mounting Holes	Yes
▪ Pricing Description	Solid Raceway,PVC,2"X2"X6',LGRY
▪ Cover Part Number	C2LG6
▪ Min. Order UOM	FT
▪ Min. Order Qty.	6
▪ BOM Qty. (# of Pkgs.)	



H

I D

- NOTES:**
1. "B" MEASURED AT BASE.
 2. STANDARD LENGTH: 6 ft. (1.83m).
 3. SEE CURRENT CATALOG FOR PART NUMBER DESIGNATIONS FOR TYPE, COLOR, AND LENGTH.
 4. TYPE "FS" SOLID WALL DUCT, IS AVAILABLE, WITH SAME DIMENSIONS, BUT WITHOUT SLOTS IN THE WALLS.
 5. DUCT TYPES "FS" AND "F" TO BE USED WITH TYPE "C" COVER. (SEE DWG # 34518-17)
 6. DIMENSIONS IN PARENTHESES ARE IN METRIC.
 7. ADHESIVE BACKED DUCT AND/OR DUCT WITH OR WITHOUT HOLES IS ALSO AVAILABLE.

PART NO. SYSTEM CHANNEL EXAMPLE:
 FS 1.5 x 2 •• 6 NM -A
 TYPE 1.5" WIDE 2" HIGH COLOR LENGTH (FT) NO MOUNTING HOLES ADHESIVE BACKED

WAS DPC_PVC_F_US_01 (2)

CAD FILENAME/LAYERS D34301BA_PVC_F_US_02A.prt

REV	DATE	BY	CHK	DESCRIPTION	ECN	CHK	CUST	SUP
-	---	---	J. REV'D "T" DIM'S AND TOL'S.	---	---	
-	---	---	I. REV'D EXAMPLE: ADDED LENGTH H. ADDED HOLES TO VIEW	---	---	
-	---	---	G. CHANGED NOTES 4 & 7. F. CHANGED TITLE TO INCLUDE "FS"	---	---	
4	8-3-01	JCST	JKG	E. ADDED DUCT SIZES: .75x1, .75x2, 2.5x3, AND 4x1.5.	34301-03	JKG	JKG	
3	01-24-97	JBA	CEF	D. REV'D EXAMPLE: ADDED S, NM & -A. C. ADDED NOTE #7.	34301-03	CEF	CEF	
2	10-18-95	DW	CEF	B. REV'D "T" DIM'S AND TOL'S.	34301-03	CEF		
1	10-26-93	DW	CEF	A. ADDED FS6X4 DUCT SIZE.	34301-03	CEF		
R	3/17/93	DW	BKR	RELEASED TO PRODUCTION.	34301-03	CEF		

PANDUIT CORP. TINLEY PARK, ILLINOIS
 WIRING DUCT, TYPE "F" & "FS"
 CUSTOMER DRAWING

UNLESS OTHERWISE SPECIFIED, DIMENSIONAL TOLERANCES ARE: (.X) ± (.XXX) ± (.XX) ± .12(3.1) ANGLES ±		UNLESS OTHERWISE SPECIFIED, ALL DIMENSIONS ARE GIVEN IN INCHES, THIRD ANGLE PROJECTION.	
DRAWN BY LDB	MAT'L: POLYVINYL CHLORIDE	SCALE NONE	
DATE 3/1/93	CHECKED BY BKR	DRAWING NO. 34301-03 Sht 1 of 2	DWG A SIZE

THIS COPY IS PROVIDED ON A RESTRICTED BASIS AND IS NOT TO BE USED IN ANY WAY DETRIMENTAL TO THE INTERESTS OF PANDUIT CORP.



NOMINAL DUCT SIZE (W X H)	B	D	D TOL	H REF	K	T	T TOL	R
.5 X .5	.69 (17.5)	.38 (9.7)	±.014 (.4)	.50 (12.7)	ON C/L	.050 (1.3)	±.008 (.2)	N/A
.5 X 1	"	.75 (19.1)	±.020 (.5)	1.00 (25.4)		"	±.010 (.3)	N/A
.75 X .75	.94 (23.8)	.56 (14.3)	"	.75 (19.1)		.055 (1.4)	±.008 (.2)	N/A
> .75 X 1	"	N/A	N/A	1.00 (25.4)	N/A	"	"	N/A
> .75 X 1.5	"	1.20 (30.5)	±.020 (.5)	1.50 (38.1)	ON C/L	.070 (1.8)	±.010 (.3)	N/A
> .75 X 2	"	N/A	N/A	2.00 (50.8)	N/A	.080 (2.0)	±.008 (.2)	N/A
1 X 1	1.25 (31.8)	.75 (19.1)	±.020 (.5)	1.00 (25.4)	ON CENTERLINE	.055 (1.4)	±.010 (.3)	N/A
1 X 1.5	"	1.20 (30.5)	"	1.50 (38.1)		.070 (1.8)	±.008 (.2)	N/A
1 X 2	"	1.63 (41.4)	±.030 (.8)	2.00 (50.8)		.080 (2.0)	±.015 (.4)	.712 (18.1)
1 X 3	"	2.63 (66.8)	"	3.00 (76.2)		.095 (2.4)	±.012 (.3)	1.212 (30.8)
1 X 4	"	3.63 (92.2)	"	4.00 (101.6)		.105 (2.7)	±.019 (.5)	1.700 (43.2)
1.5 X 1	1.75 (44.5)	.75 (19.1)	±.020 (.5)	1.00 (25.4)		.060 (1.5)	±.010 (.3)	N/A
1.5 X 1.5	"	1.20 (30.5)	"	1.50 (38.1)		.070 (1.8)	±.012 (.3)	N/A
1.5 X 2	"	1.63 (41.4)	±.030 (.8)	2.00 (50.8)		.080 (2.0)	"	.712 (18.1)
1.5 X 3	"	2.63 (66.8)	"	3.00 (76.2)		.095 (2.4)	±.010 (.3)	1.212 (30.8)
1.5 X 4	"	3.63 (92.2)	"	4.00 (101.6)	.105 (2.7)	±.012 (.3)	1.700 (43.2)	

N/A = NOT AVAILABLE

NOMINAL DUCT SIZE (W X H)	B	D	D TOL	H REF	K	T	T TOL	R
2 X 1	2.25 (57.2)	.75 (19.1)	±.020 (.5)	1.00 (25.4)	.50 (12.7)	.060 (1.5)	±.010 (.3)	N/A
2 X 1.5	"	1.20 (30.5)	"	1.50 (38.1)	"	.070 (1.8)	±.012 (.3)	N/A
2 X 2	"	1.63 (41.4)	±.030 (.8)	2.00 (50.8)	"	.080 (2.0)	"	.712 (18.1)
2 X 3	"	2.63 (66.8)	"	3.00 (76.2)	"	.095 (2.4)	±.010 (.3)	1.212 (30.8)
2 X 4	"	3.63 (92.0)	"	4.00 (101.6)	"	.105 (2.7)	±.017 (.4)	1.700 (43.2)
2 X 5	"	4.63 (117.6)	±.040 (1.0)	5.00 (127.0)	"	.111 (2.8)	"	2.233 (56.7)
> 2.5 X 3	2.75 (69.8)	N/A	N/A	3.00 (76.2)	N/A	.095 (2.4)	±.015 (.4)	N/A
3 X 1	3.25 (82.6)	.75 (19.1)	±.020 (.5)	1.00 (25.4)	1.00 (25.4)	.065 (1.7)	±.010 (.3)	N/A
3 X 2	"	1.63 (41.4)	±.030 (.8)	2.00 (50.8)	"	.080 (2.0)	"	.712 (18.1)
3 X 3	"	2.63 (66.8)	"	3.00 (76.2)	"	.100 (2.5)	±.015 (.4)	1.212 (30.8)
3 X 4	"	3.63 (92.2)	"	4.00 (101.6)	"	.105 (2.7)	"	1.700 (43.2)
3 X 5	"	4.63 (117.6)	±.040 (1.0)	5.00 (127.0)	"	.115 (2.9)	±.012 (.3)	2.233 (56.7)
> 4 X 1.5	4.25 (108.0)	N/A	N/A	1.50 (38.1)	N/A	.070 (1.8)	±.008 (.2)	N/A
4 X 2	"	1.63 (41.4)	±.030 (.8)	2.00 (50.8)	1.50 (38.1)	.080 (2.0)	"	.712 (18.1)
4 X 3	"	2.63 (66.8)	"	3.00 (76.2)	"	.095 (2.4)	±.010 (.3)	1.212 (30.8)
4 X 4	"	3.63 (92.2)	"	4.00 (101.6)	"	.105 (2.7)	±.012 (.3)	1.700 (43.2)
4 X 5	"	4.63 (117.6)	±.040 (1.0)	5.00 (127.0)	"	.110 (2.8)	±.018 (.5)	2.233 (56.7)
> 6 X 4	6.25 (158.8)	N/A	N/A	4.00 (101.6)	N/A	.110 (2.8)	±.010 (.3)	N/A

N/A = NOT AVAILABLE

> = AVAILABLE AS "FS" ONLY.



WAS DPC_PVC_F_US_01

DIMENSIONS IN PARENTHESIS ARE IN METRIC.

CAD FILENAME/LAYERS

D34301BA_PVC_F_US_02

REV	DATE	BY	CHK	DESCRIPTION	ECN	CHK	CUST	SUP
4	8-3-01	JCST	JKG	SEE SHEET 1 FOR REVISION NUMBERS	34301-03	JKG	JKG	
3	01-24-97	JBA	CEF	SEE SHEET 1 FOR REVISION NUMBERS	34301-03	CEF	CEF	
2	10-18-95	DW	CEF	SEE SHEET 1 FOR REVISION NUMBERS	34301-03	CEF		
1	10-27-93	DW	CEF	SEE SHEET 1 FOR REVISION NUMBERS	34301-03	CEF		
R	3/17/93	DW	BKR	SEE SHEET 1 FOR REVISION NUMBERS	34301-03	CEF		

<h1>PANDUIT</h1>		CORP. TINLEY PARK, ILLINOIS	
<h2>WIRING DUCT, TYPE "F" & "FS" CUSTOMER DRAWING</h2>			
UNLESS OTHERWISE SPECIFIED, DIMENSIONAL TOLERANCES ARE: (.X) ± (.XXX) ± (.XX) ± (.1213.1) ANGLES ±		UNLESS OTHERWISE SPECIFIED, ALL DIMENSIONS ARE GIVEN IN INCHES, THIRD ANGLE PROJECTION.	
DRAWN BY DW	MAT'L: POLYVINYL CHLORIDE	SCALE NONE	
GATE 3/1/93		DRAWING NO. 34301-03 Sht 2 of 2	DWG A SIZE
CHECKED BY BKR			