



## FL12X12LG-A



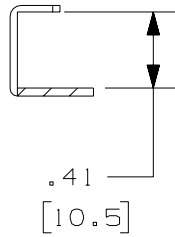
- *PANDUIT* Flexible Duct is a one piece slotted sidewall, open finger design wiring duct intended to route and protect wires installed in control panel applications that require flexibility. *PANDUIT* Flexible Wiring Duct has offset fingers which extend from the sides and come together at the top of the duct to completely enclose any wire or cable. Due to its flexibility, Flexible Wiring Duct is useful in routing wires from control panel back planes and sidewalls, over hinges, to components mounted on control panel doors.
- **Specifications**
  - Flexible polypropylene material
  - UL Recognized continuous use temperatures up to 149°F (65°C)
  - UL94 Flammability Rating of V-2
  - Factory applied adhesive tape provided for easy mounting
- **Features and Benefits**
  - Flexible Duct can be used in applications requiring flexibility where conventional wiring duct cannot
  - Fully enclosed design retain cables while reducing number of parts needed to stock
  - Offset, angled fingers reduces installation time compared to designs with overlapping fingers
- Available in LG (RAL 7040 Light Gray) color only.

■ Part Number	FL12X12LG-A
■ RoHS Compliancy Status	Compliant
■ Part Description	Slotted sidewall, open finger design wiring duct.
■ Material	Polypropylene
■ Color	RAL 7040 Light Gray
■ CSA Certified	Yes
■ Length (In.)	19.7
■ Length (mm)	500
■ Adhesive Mounting Tape	Yes
■ Duct Size W x H (In.)	.49 x .49
■ Duct Size W x H (mm)	12.5 x 12.5
■ Mounting Method	Pressure Sensitive Adhesive Tape
■ Pricing Description	Slotted Duct, Polypropylene,12X12X500mm,LG,Adh.
■ Min. Order UOM	PC
■ Min. Order Qty.	112
■ BOM Qty. (# of Pkgs.)	

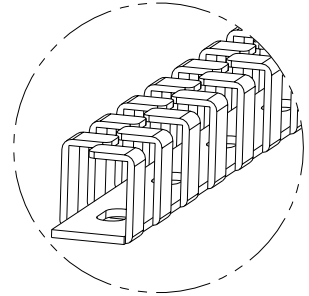
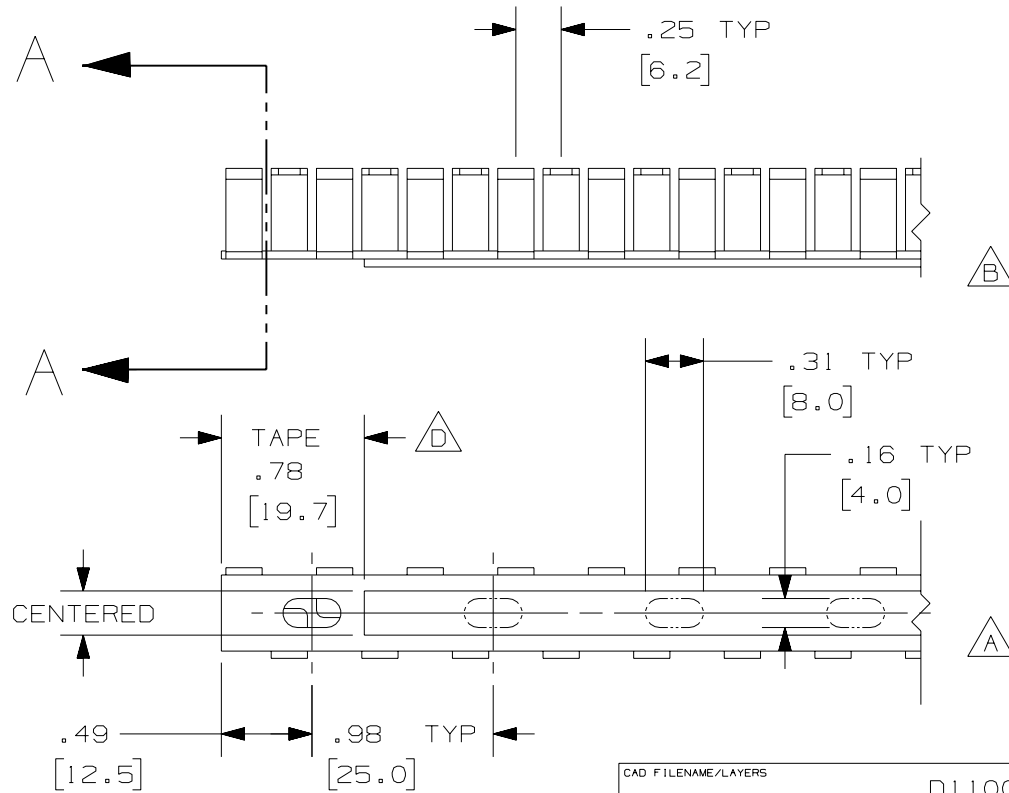
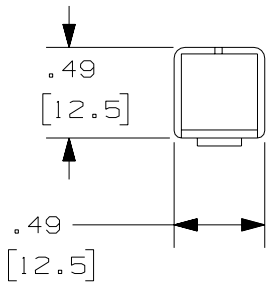
THIS COPY IS PROVIDED ON A RESTRICTED BASIS AND IS NOT TO BE USED IN ANY WAY DETRIMENTAL TO THE INTERESTS OF PANDUIT CORP.

NOTE.

- 1. ALL DIMENSIONS ARE REFERENCE ONLY.
- 2. DIMENSIONS IN PARENTHESES ARE METRIC.
- 3. DUCT IS AVAILABLE IN 19.7 IN [500] LENGTHS.



SECTION A - A



CAD FILENAME/LAYERS D110000K\_DC/02B

REV	DATE	BY	CHK	DESCRIPTION
4	8/22/07	JCSTMKBE		E. ADDED LENGTH NOTE
3	4/5/06	JCSTMKBE		D. LOCATED TAPE PROPERLY
2	4/13/05	JCSTMKBE		C. CHANGED MATERIAL
1	7/26/04	JCSTMKBE		B. CHANGED MATERIAL AND VIEW A. ADDED NOTE AND VIEW
R	9/12/03	JHNU	JGG	DRAWING RELEASED

**PANDUIT** CORP. TINLEY PARK, ILLINOIS

WIRING DUCT - FLEXIBLE DUCT  
WITH ADHESIVE TAPE - 12mm x 12mm  
MARKETING DRAWING

DRAWN BY JHNU	MAT'L:  POLYPROPYLENE <span style="display: inline-block; border: 1px solid black; padding: 2px;">C</span> <span style="display: inline-block; border: 1px solid black; padding: 2px;">B</span>	SCALE FULL
DATE 9/12/03	CHK'D JGG	DRAWING NO. 36897-754

DWG  
SIZE  
A