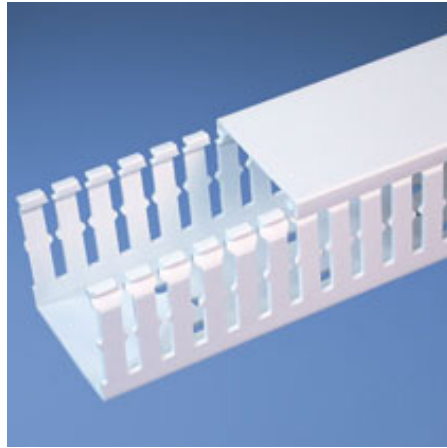




F3X3WH6-A

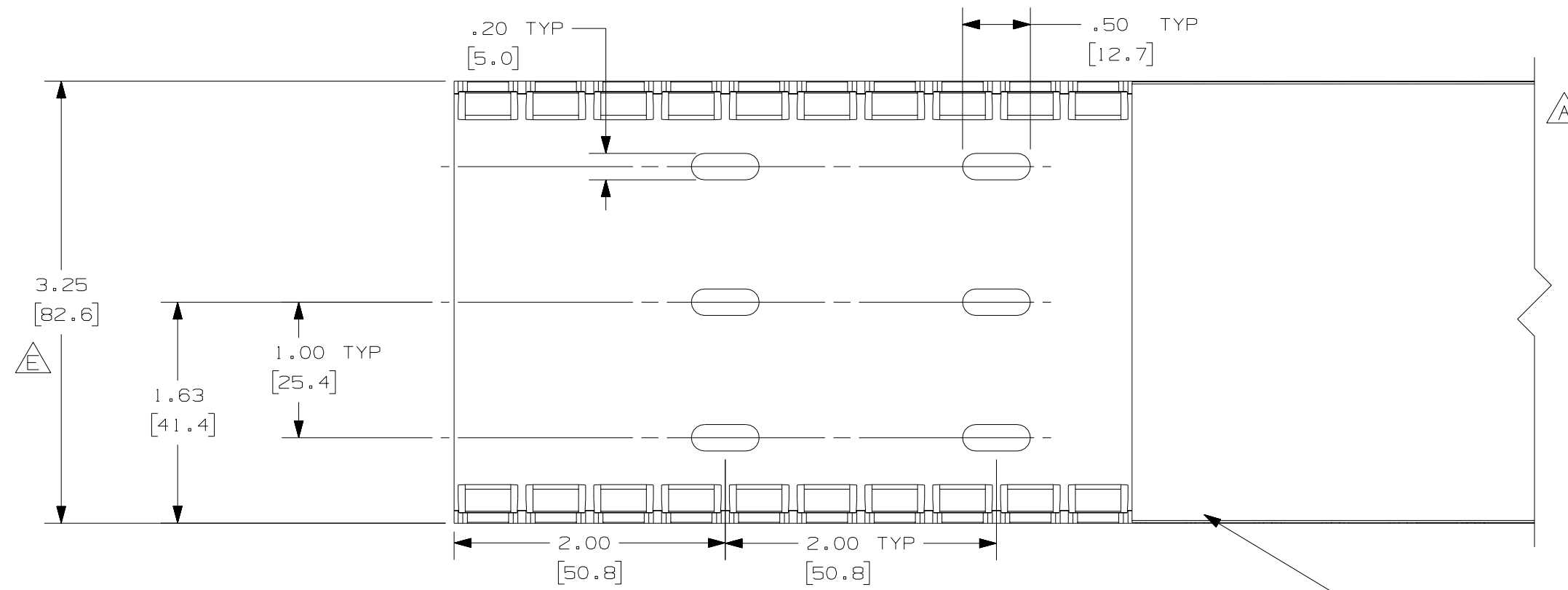


- Choose from 29 sizes of *PANDUIT*® Type F Wiring Duct from 0.5" x 0.5" up to 4.0" x 5.0". Used for general purpose control panel wiring in communication closets. Ideal for use with high-density terminal blocks. The non-slip cover conceals all wiring and is easy to install. The duct and cover form a flush sidewall providing increased capacity and improved aesthetics.
- **Specifications**
 - Made of lead-free PVC
 - UL Recognized continuous use temperature: 122°F (50°C)
 - UL94 Flammability Rating of V-0
 - Conforms with NFPA 79-2002 section 14.3.1 requirement for flame retardant material
 - Available in Light Gray and White
 - Provided with mounting holes
- **Features and Benefits**
 - Narrow finger/slot design allows further fanning of wires for neater wire management in high-density control panels
 - *PANDUIT*® exclusive rounded edges protects hands and wiring/cabling from abrasion
 - Non-slip cover stays in place during shipment, vibration and when in a vertical orientation, eliminating rework
 - Flush cover design holds 10-12% more wires than traditional duct designs
 - Double scoreline allows quick modification for larger cabling bundles saving installation time leading to a lower installed cost
 - Specially formulated lead-free material eliminates health concerns associated with PVC that contains lead
 - Double restricted slot design retains wire in slot for fast, easy wire installation or removal
- Base and cover sold separately.

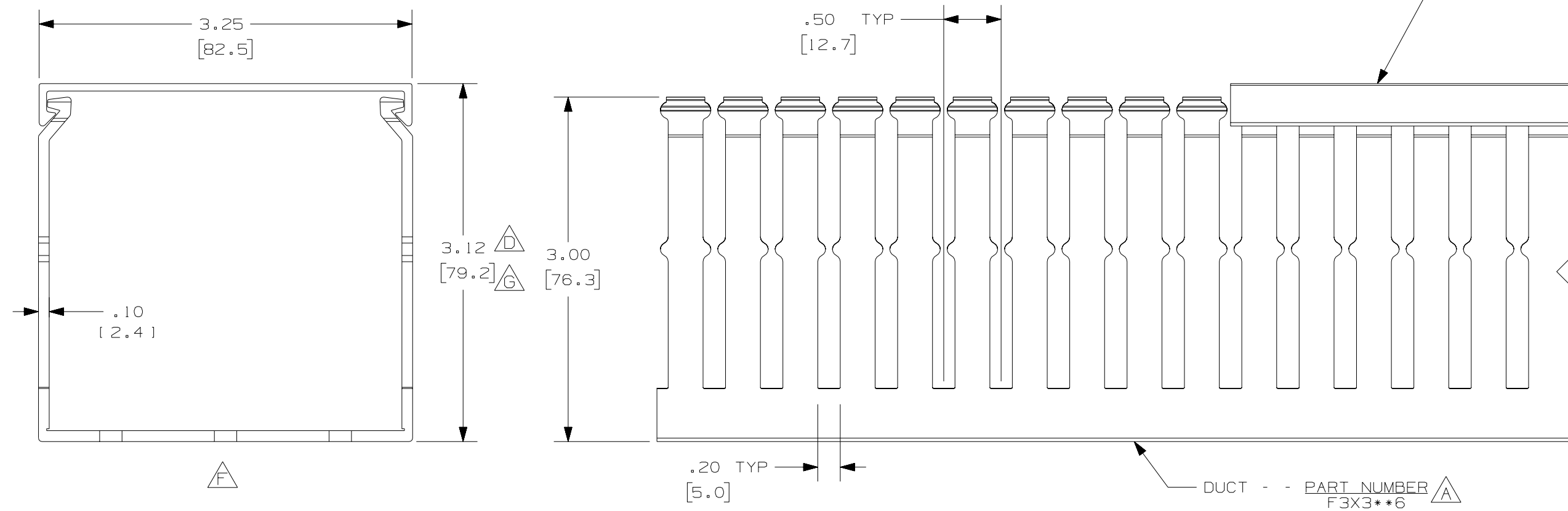
▪ Part Number	F3X3WH6-A
▪ RoHS Compliancy Status	Compliant
▪ Part Description	Narrow finger, slotted wiring duct
▪ Material	PVC
▪ Color	White
▪ CSA Certified	Yes
▪ Adhesive Mounting Tape	Yes
▪ CE Compliant	Yes
▪ Duct Size W x H (In.)	3.25 x 3.12
▪ Duct Size W x H (mm)	82.6 x 79.2
▪ Mounting Method	Standard Mounting Holes with Adhesive
▪ Pricing Description	Slotted Duct, PVC,3"X3"X6' Adh., White
▪ Slot Width (In.)	0.2
▪ Slot Width (mm)	5

▪ Cover Part Number	C3WH6
▪ Min. Order UOM	FT
▪ Min. Order Qty.	6
▪ BOM Qty. (# of Pkgs.)	

THIS COPY IS PROVIDED ON A RESTRICTED BASIS AND IS NOT TO BE USED IN ANY WAY DETRIMENTAL TO THE INTERESTS OF PANDUIT CORP.



COVER - - PART NUMBER C3**6



DUCT - - PART NUMBER F3X3**6



NOTES:

1. ALL DIMENSIONS ARE REFERENCE ONLY.
2. DIMENSIONS IN PARENTHESIS ARE METRIC.
3. THE ** DENOTE COLOR.
4. DUCT AND COVER ARE AVAILABLE IN 6 FT [1828.8] LENGTHS

REV	DATE	BY	CHK	DESCRIPTION
--	-----	---	---	H. ADDED LENGTH NOTE G. CORRECTED DIMENSION
3	7-23-07	JCSTMKE		F. DELETED DIMENSION E. ADDED DIMENSION
2	5/5/05	JCSTMKE		D. CHANGED DUCT DIMENSIONS / SIZE (WAS 3X4)
--	-----	---	---	C. CHANGED DRAWING SIZE
1	9-9-04	JCSTMKE		B. CHANGED VIEW A. ADDED TOP VIEW, NOTES, AND LABELS
R	6-18-03	JHNU	JGG	DRAWING RELEASED

CAD FILENAME/LAYERS		D11000CP_DC/00D	
PANDUIT			
CORP. TINLEY PARK, ILLINOIS			
WIRING DUCT - TYPE F DUCT WITH COVER			
3X3			
MARKETING DRAWING			
DRWN BY	MAT'L:	SCALE	
JHNU	PVC	FULL	
DATE		DRAWING NO.	DWG
6-18-03		36897-778	C
CHECKED BY			SIZE
JGG			C