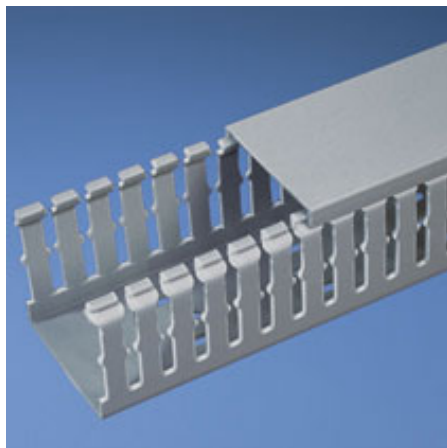




F2X3LG6-A

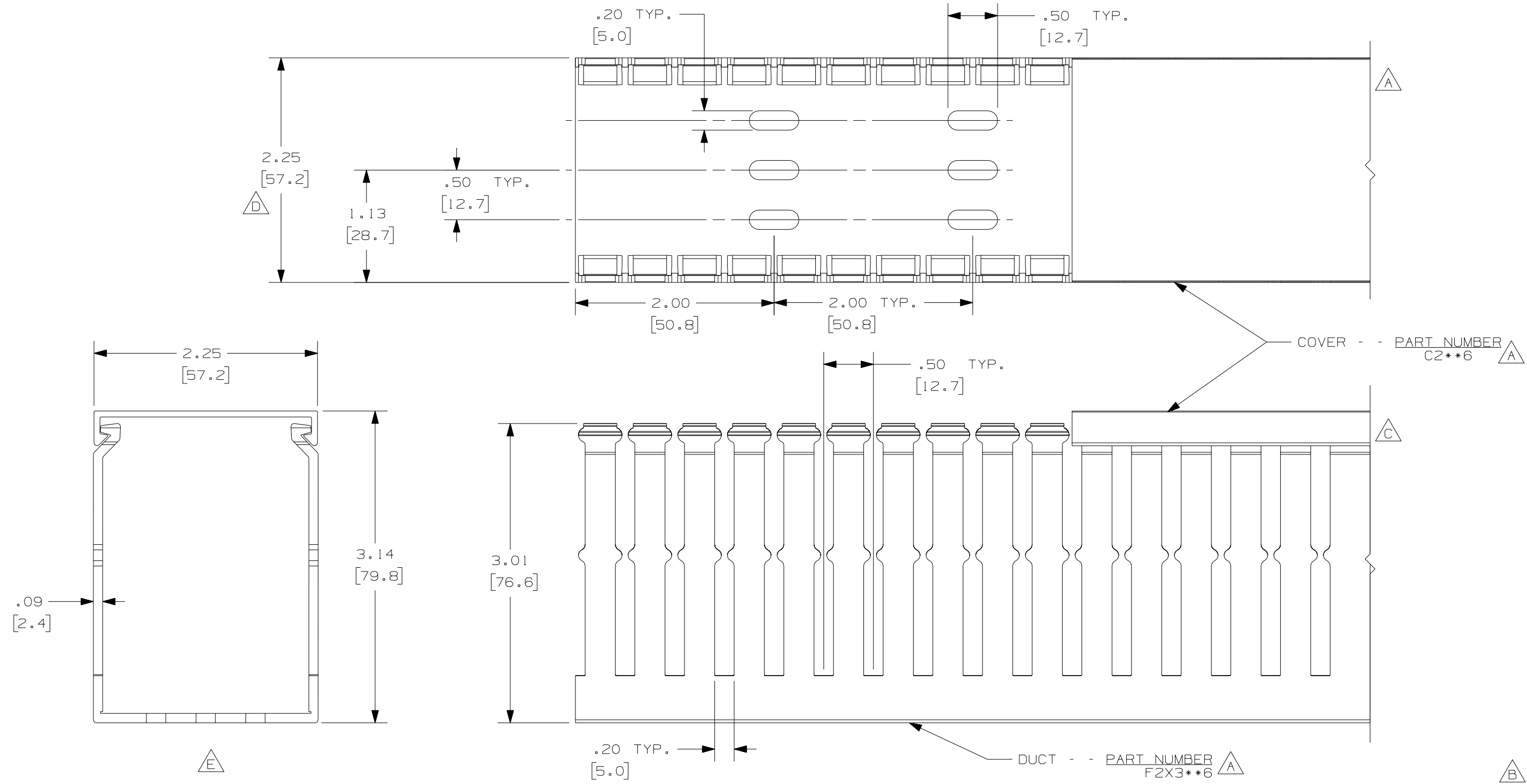


- Choose from 29 sizes of *PANDUIT* Type F Wiring Duct from 0.5" x 0.5" up to 4.0" x 5.0". Used for general purpose control panel wiring in communication closets. Ideal for use with high-density terminal blocks. The non-slip cover conceals all wiring and is easy to install. The duct and cover form a flush sidewall providing increased capacity and improved aesthetics.
- **Specifications**
 - Made of lead-free PVC
 - UL Recognized continuous use temperature: 50°C (122°F)
 - UL94 Flammability Rating of V-0
 - Conforms with NFPA 79-2002 section 14.3.1 requirement for flame retardant material
 - Available in Light Gray and White
 - Provided with mounting holes
- **Features and Benefits**
 - Narrow finger/slot design allows further fanning of wires for neater wire management in high-density control panels
 - *PANDUIT* exclusive rounded edges protects hands and wiring/cabling from abrasion
 - Non-slip cover stays in place during shipment, vibration and when in a vertical orientation, eliminating rework
 - Flush cover design holds 10-12% more wires than traditional duct designs
 - Double scoreline allows quick modification for larger cabling bundles saving installation time leading to a lower installed cost
 - Specially formulated lead-free material eliminates health concerns associated with PVC that contains lead
 - Double restricted slot design retains wire in slot for fast, easy wire installation or removal
- Base and cover sold separately.

■ Part Number	F2X3LG6-A
■ RoHS Compliancy Status	Compliant
■ Part Description	Narrow finger, slotted wiring duct.
■ Material	Lead-Free PVC
■ Color	Light Gray
■ CSA Certified	Yes
■ UL Recognized (File No. E147128)	Yes
■ Length (ft.)	6
■ Adhesive Mounting Tape	Yes
■ CE Marking	Yes
■ Duct Size W x H (In.)	2.25 x 3.12
■ Duct Size W x H (mm)	57.2 x 79.2
■ Mounting Method	Standard Mounting Holes with Adhesive
■ Pricing Description	Slotted Duct,PVC,2"X3"X6',Adh.,LGray

▪ Slot Width (In.)	.20
▪ Slot Width (mm)	5.0
▪ Cover Part Number	C2LG6
▪ Min. Order UOM	FT
▪ Min. Order Qty.	6
▪ BOM Qty. (# of Pkgs.)	

THIS COPY IS PROVIDED ON A RESTRICTED BASIS AND IS NOT TO BE USED IN ANY WAY DETRIMENTAL TO THE INTERESTS OF PANDUIT CORP.



- NOTE.**
1. ALL DIMENSIONS ARE REFERENCE ONLY.
 2. DIMENSIONS IN PARENTHESES ARE METRIC.
 3. THE ** DENOTE COLOR.
 4. DUCT AND COVER ARE AVAILABLE IN 6 FT [1828.8] LENGTHS

CAD FILENAME/LAYERS				D11000CK_DC/OOC			
<p style="text-align: center;">PANDUIT CORP. TINLEY PARK, ILLINOIS</p> <p style="text-align: center;">WIRING DUCT - TYPE F WITH COVER 2 X 3 MARKETING DRAWING</p>				DRAWN BY		SCALE	
				JHNU		FULL	
REV				DATE		DRAWING NO.	
R				6-18-03		36897-773	
REV				DATE		DWG SIZE	
BY				DESCRIPTION		B	
CHK						A	
DESCRIPTION						SIZE	
F. ADDED LENGTH NOTE							
E. DELETED DIMENSION							
D. ADDED DIMENSION							
B. CHANGED DRAWING SIZE							
A. ADDED TOP VIEW, LABELS, AND NOTE							
DRAWING RELEASED							