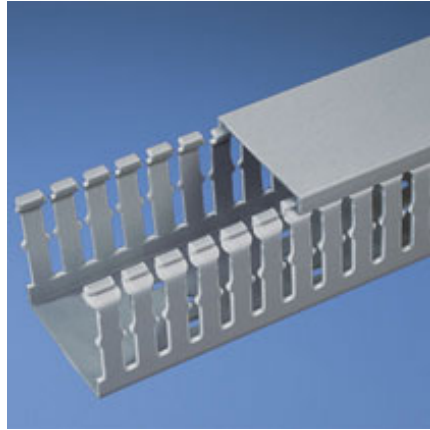




## F1X1LG6-A

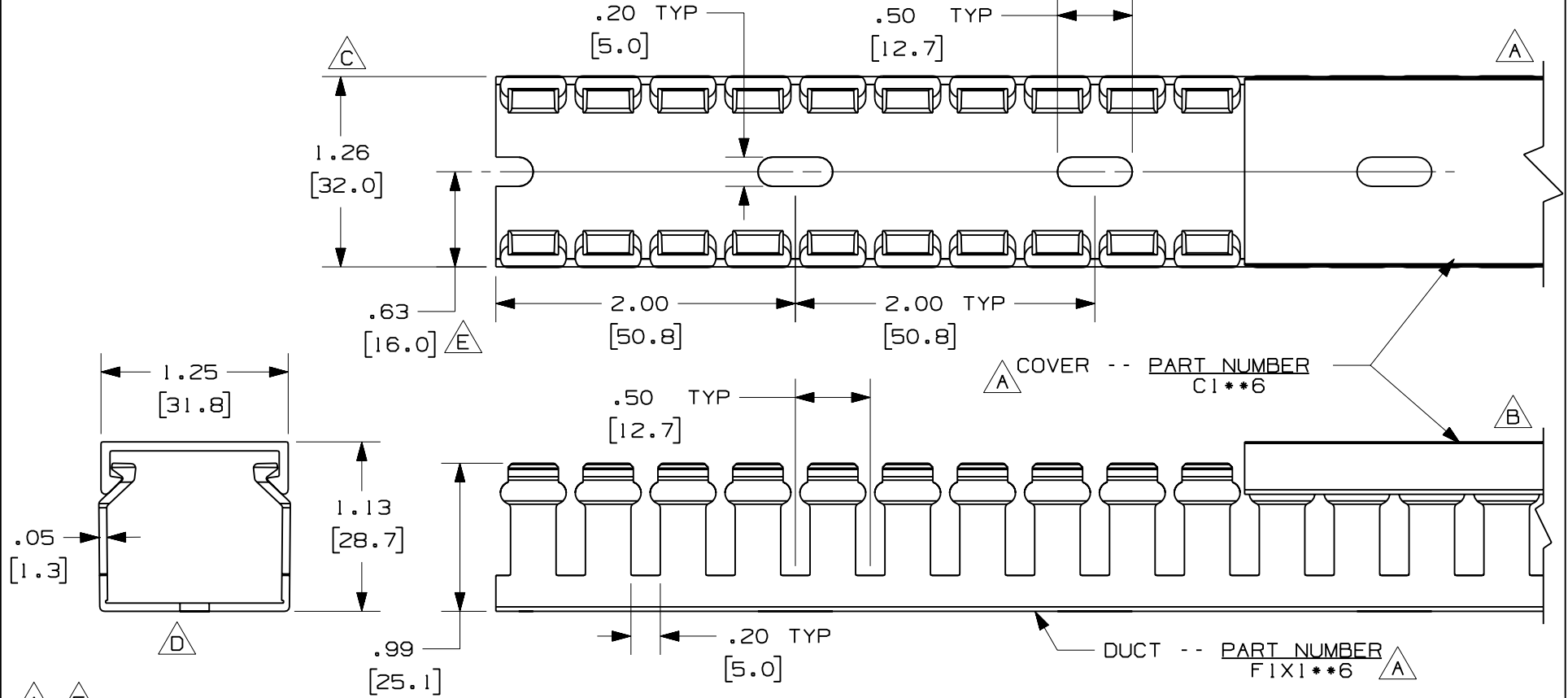


- Choose from 29 sizes of *PANDUIT* Type F Wiring Duct from 0.5" x 0.5" up to 4.0" x 5.0". Used for general purpose control panel wiring in communication closets. Ideal for use with high-density terminal blocks. The non-slip cover conceals all wiring and is easy to install. The duct and cover form a flush sidewall providing increased capacity and improved aesthetics.
- **Specifications**
  - Made of lead-free PVC
  - UL Recognized continuous use temperature: 50°C (122°F)
  - UL94 Flammability Rating of V-0
  - Conforms with NFPA 79-2002 section 14.3.1 requirement for flame retardant material
  - Available in Light Gray and White
  - Provided with mounting holes
- **Features and Benefits**
  - Narrow finger/slot design allows further fanning of wires for neater wire management in high-density control panels
  - *PANDUIT* exclusive rounded edges protects hands and wiring/cabling from abrasion
  - Non-slip cover stays in place during shipment, vibration and when in a vertical orientation, eliminating rework
  - Flush cover design holds 10-12% more wires than traditional duct designs
  - Double scoreline allows quick modification for larger cabling bundles saving installation time leading to a lower installed cost
  - Specially formulated lead-free material eliminates health concerns associated with PVC that contains lead
  - Double restricted slot design retains wire in slot for fast, easy wire installation or removal
- Base and cover sold separately.

■ Part Number	F1X1LG6-A
■ RoHS Compliancy Status	Compliant
■ Part Description	Narrow finger, slotted wiring duct.
■ Material	Lead-Free PVC
■ Color	Light Gray
■ CSA Certified	Yes
■ UL Recognized (File No. E147128)	Yes
■ Length (ft.)	6
■ Adhesive Mounting Tape	Yes
■ CE Marking	Yes
■ Duct Size W x H (In.)	1.26 x 1.13
■ Duct Size W x H (mm)	32.0 x 28.7
■ Mounting Method	Standard Mounting Holes with Adhesive
■ Pricing Description	Slotted Duct,PVC,1"X1"X6',Adh.,LGray
■ Slot Width (In.)	.20

▪ Slot Width (mm)	5.0
▪ Cover Part Number	C1LG6
▪ Min. Order UOM	FT
▪ Min. Order Qty.	6
▪ BOM Qty. (# of Pkgs.)	

THIS COPY IS PROVIDED ON A RESTRICTED BASIS AND IS NOT TO BE USED IN ANY WAY DETRIMENTAL TO THE INTERESTS OF PANDUIT CORP.



**A** **F**

NOTE.

1. ALL DIMENSIONS ARE REFERENCE ONLY.
2. DIMENSIONS IN PARENTHESES ARE METRIC.
3. THE \*\* DENOTE COLOR.
4. DUCT AND COVER ARE AVAILABLE IN 6 FT [1828.8] LENGTH

CAD FILENAME/LAYERS D11000BX\_DC/OOC

**PANDUIT** CORP. TINLEY PARK, ILLINOIS

WIRING DUCT - TYPE F DUCT WITH COVER  
1 X 1  
MARKETING DRAWING

DRAWN BY JCST	MAT'L: PVC	SCALE FULL
DATE 5/22/03		DWG A
CHK'D JGG		DWG SIZE

REV	DATE	BY	CHK	DESCRIPTION
2	7/23/07	JCST	MKBE	F. ADDED LENGTH NOTE E. CORRECTED DIMENSION
1	5/27/04	JCST	MKBE	D. REMOVED DIMENSION C. ADDED DIMENSION
R	5/22/03	JCST	JGG	B. CHANGED VIEW A. ADDED TOP VIEW, LABELS, AND NOTES.
				DRAWING RELEASED