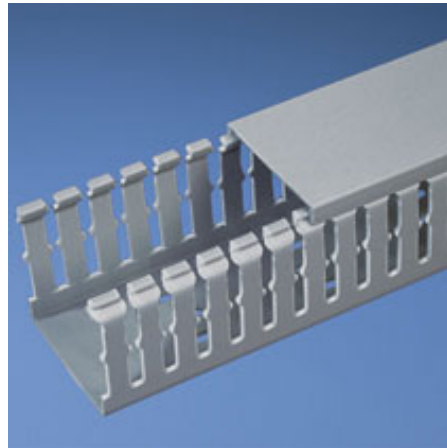




## F1.5X3LG6

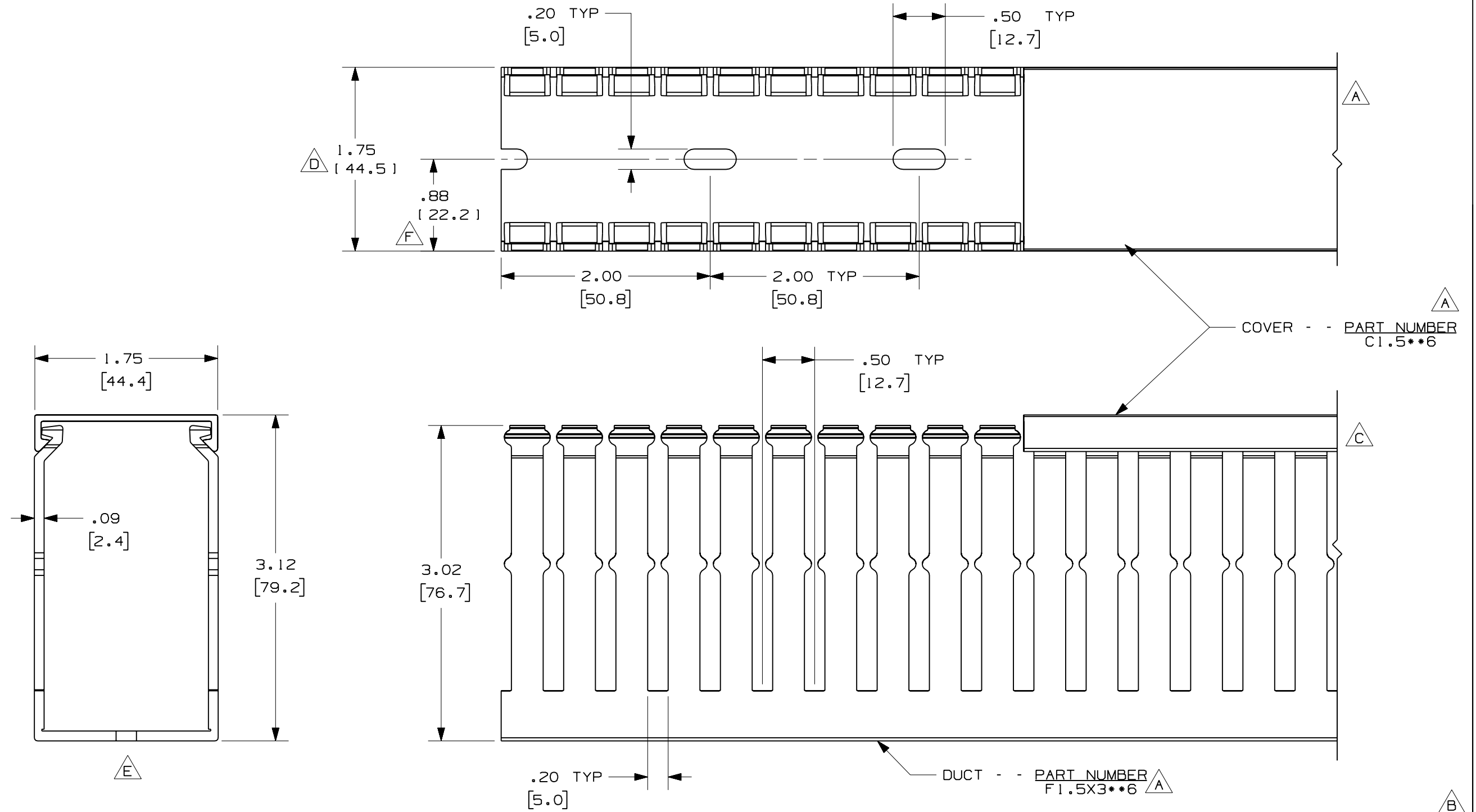


- Choose from 29 sizes of *PANDUIT* Type F Wiring Duct from 0.5" x 0.5" up to 4.0" x 5.0". Used for general purpose control panel wiring in communication closets. Ideal for use with high-density terminal blocks. The non-slip cover conceals all wiring and is easy to install. The duct and cover form a flush sidewall providing increased capacity and improved aesthetics.
- **Specifications**
  - Made of lead-free PVC
  - UL Recognized continuous use temperature: 50°C (122°F)
  - UL94 Flammability Rating of V-0
  - Conforms with NFPA 79-2002 section 14.3.1 requirement for flame retardant material
  - Available in Light Gray and White
  - Provided with mounting holes
- **Features and Benefits**
  - Narrow finger/slot design allows further fanning of wires for neater wire management in high-density control panels
  - *PANDUIT* exclusive rounded edges protects hands and wiring/cabling from abrasion
  - Non-slip cover stays in place during shipment, vibration and when in a vertical orientation, eliminating rework
  - Flush cover design holds 10-12% more wires than traditional duct designs
  - Double scoreline allows quick modification for larger cabling bundles saving installation time leading to a lower installed cost
  - Specially formulated lead-free material eliminates health concerns associated with PVC that contains lead
  - Double restricted slot design retains wire in slot for fast, easy wire installation or removal
- Base and cover sold separately.

▪ Part Number	F1.5X3LG6
▪ RoHS Compliancy Status	Compliant
▪ Part Description	Narrow finger, slotted wiring duct.
▪ Material	Lead-Free PVC
▪ Color	Light Gray
▪ CSA Certified	Yes
▪ UL Recognized (File No. E147128)	Yes
▪ Length (ft.)	6
▪ CE Marking	Yes
▪ Duct Size W x H (In.)	1.75 x 3.12
▪ Duct Size W x H (mm)	44.5 x 79.2
▪ Mounting Method	Standard Mounting Holes
▪ Pricing Description	Slotted Duct,PVC,1.5"X3"X6',LGray
▪ Slot Width (In.)	.20

▪ Slot Width (mm)	5.0
▪ Cover Part Number	C1.5LG6
▪ Min. Order UOM	FT
▪ Min. Order Qty.	6
▪ BOM Qty. (# of Pkgs.)	

THIS COPY IS PROVIDED ON A RESTRICTED BASIS AND IS NOT TO BE USED IN ANY WAY DETRIMENTAL TO THE INTERESTS OF PANDUIT CORP.



- NOTE.
1. ALL DIMENSIONS ARE REFERENCE ONLY.
  2. DIMENSIONS IN PARENTHESES ARE METRIC.
  3. THE \*\* DENOTE COLOR.
  4. DUCT AND COVER ARE AVAILABLE IN 6 FT [1828.8] LENGTH

REV	DATE	BY	CHK	DESCRIPTION	CAD FILENAME/LAYERS	MAT'L:	SCALE	DWG SIZE
					DI1000CF_DC/OOC		FULL	B
					<b>PANDUIT</b> CORP. TINLEY PARK, ILLINOIS			
					WIRING DUCT - TYPE F WITH COVER 1.5 X 3 MARKETING DRAWING			
2	7-23-07	JCST	MKBE	G. ADDED LENGTH NOTE F. CORRECTED DIMENSION				
1	9-17-04	JCST	MKBE	E. DELETED DIMENSION D. ADDED DIMENSION				
R	6-18-03	JHNU	JGG	B. CHANGED DRAWING SIZE A. ADDED TOP VIEW, LABELS, AND NOTE	DATE 6-18-03	PVC	DRAWING NO. 36897-768	DWG B SIZE
					CHECKED BY JGG			