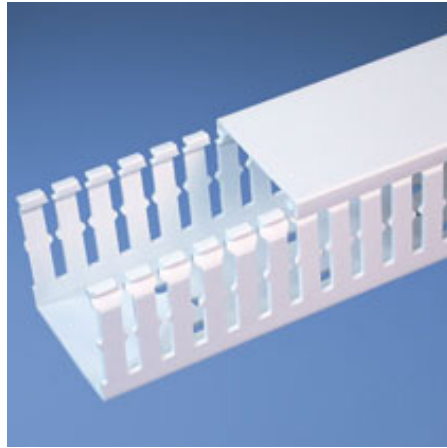




F1.5X2WH6

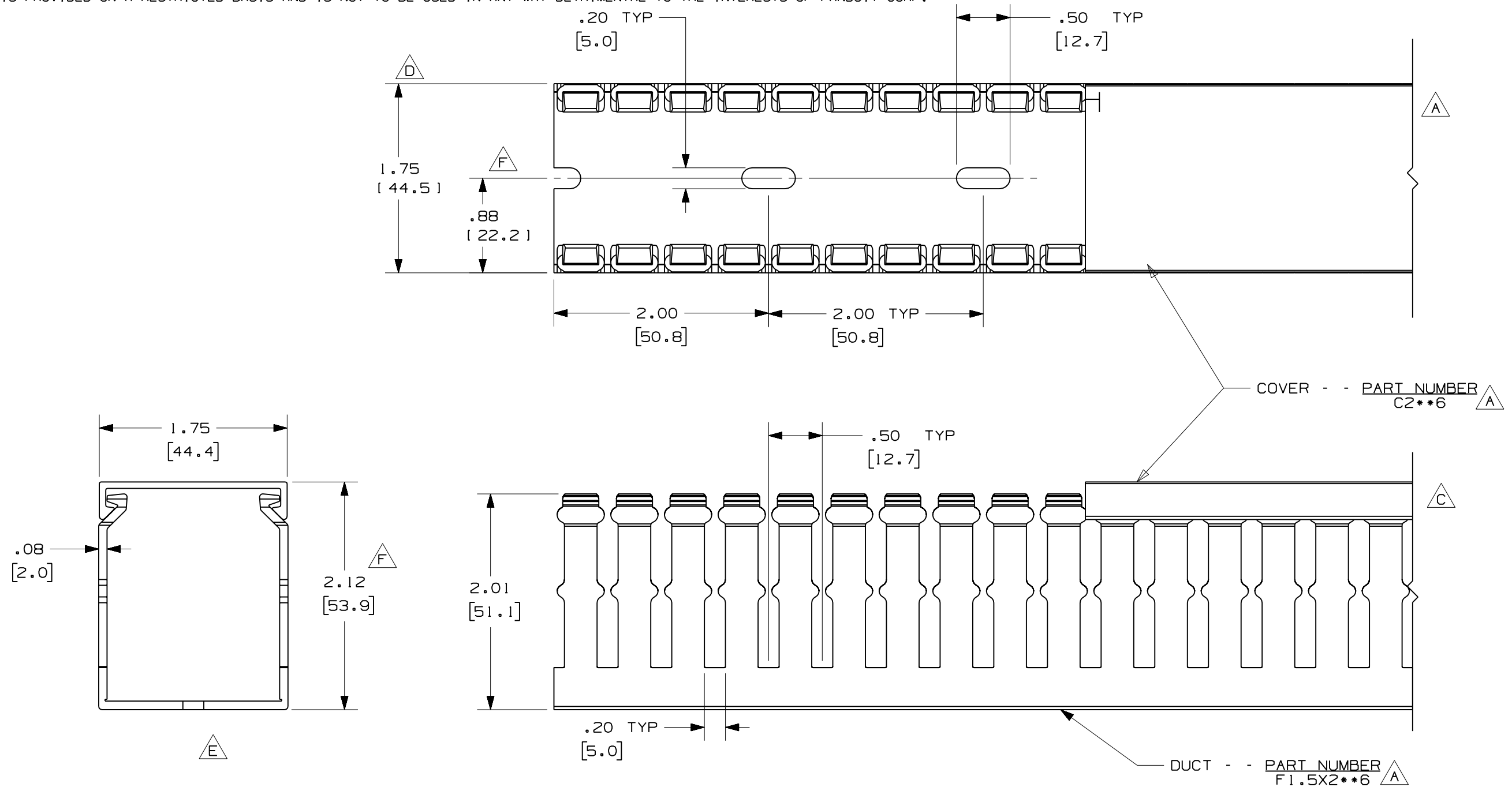


- Choose from 29 sizes of *PANDUIT*® Type F Wiring Duct from 0.5" x 0.5" up to 4.0" x 5.0". Used for general purpose control panel wiring in communication closets. Ideal for use with high-density terminal blocks. The non-slip cover conceals all wiring and is easy to install. The duct and cover form a flush sidewall providing increased capacity and improved aesthetics.
- **Specifications**
 - Made of lead-free PVC
 - UL Recognized continuous use temperature: 122°F (50°C)
 - UL94 Flammability Rating of V-0
 - Conforms with NFPA 79-2002 section 14.3.1 requirement for flame retardant material
 - Available in Light Gray and White
 - Provided with mounting holes
- **Features and Benefits**
 - Narrow finger/slot design allows further fanning of wires for neater wire management in high-density control panels
 - *PANDUIT*® exclusive rounded edges protects hands and wiring/cablings from abrasion
 - Non-slip cover stays in place during shipment, vibration and when in a vertical orientation, eliminating rework
 - Flush cover design holds 10-12% more wires than traditional duct designs
 - Double scoreline allows quick modification for larger cabling bundles saving installation time leading to a lower installed cost
 - Specially formulated lead-free material eliminates health concerns associated with PVC that contains lead
 - Double restricted slot design retains wire in slot for fast, easy wire installation or removal
- Base and cover sold separately.

▪ Part Number	F1.5X2WH6
▪ RoHS Compliancy Status	Compliant
▪ Part Description	Narrow finger, slotted wiring duct.
▪ Material	Lead-Free PVC
▪ Color	White
▪ CSA Certified	Yes
▪ Length (ft.)	6
▪ CE Marking	Yes
▪ Duct Size W x H (In.)	1.75 x 2.12
▪ Duct Size W x H (mm)	44.5 x 53.8
▪ Mounting Method	Standard Mounting Holes
▪ Pricing Description	Slotted Duct,PVC,1.5"X2"X6',White
▪ Slot Width (In.)	0.20
▪ Slot Width (mm)	5.0

▪ Cover Part Number	C1.5WH6
▪ Min. Order UOM	FT
▪ Min. Order Qty.	6
▪ BOM Qty. (# of Pkgs.)	

THIS COPY IS PROVIDED ON A RESTRICTED BASIS AND IS NOT TO BE USED IN ANY WAY DETRIMENTAL TO THE INTERESTS OF PANDUIT CORP.



A NOTE.

- G**
1. ALL DIMENSIONS ARE REFERENCE ONLY.
 2. DIMENSIONS IN PARENTHESES ARE METRIC.
 3. THE ** DENOTE COLOR.
 4. DUCT AND COVER ARE AVAILABLE IN 6 FT [1828.8] LENGTHS

REV	DATE	BY	CHK	DESCRIPTION
2	7-23-07	JCST	MKBE	E. DELETED DIMENSION D. ADDED DIMENSION
1	9-17-04	JCST	MKBE	B. CHANGED DRAWING SIZE C. CHANGED VIEW A. ADDED TOP VIEW, LABELS, AND NOTE
R	6-19-03	JHNU	JGG	DRAWING RELEASED

CAD FILENAME/LAYERS		D11000CE_DC/01A	
PANDUIT CORP. TINLEY PARK, ILLINOIS			
WIRING DUCT - TYPE F WITH COVER 1.5 X 2 MARKETING DRAWING			
DRAWN BY JHNU	MAT'L: PVC	SCALE FULL	DWG B
DATE 6-19-03	CHECKED BY JGG	DRAWING NO. 36897-767	SIZE B