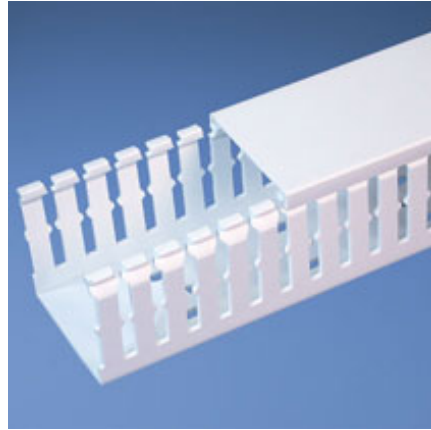




F1.5X1.5WH6



- Choose from 29 sizes of *PANDUIT*® Type F Wiring Duct from 0.5" x 0.5" up to 4.0" x 5.0". Used for general purpose control panel wiring in communication closets. Ideal for use with high-density terminal blocks. The non-slip cover conceals all wiring and is easy to install. The duct and cover form a flush sidewall providing increased capacity and improved aesthetics.
- **Specifications**
 - Made of lead-free PVC
 - UL Recognized continuous use temperature: 122°F (50°C)
 - UL94 Flammability Rating of V-0
 - Conforms with NFPA 79-2002 section 14.3.1 requirement for flame retardant material
 - Available in Light Gray and White
 - Provided with mounting holes
- **Features and Benefits**
 - Narrow finger/slot design allows further fanning of wires for neater wire management in high-density control panels
 - *PANDUIT*® exclusive rounded edges protects hands and wiring/cabling from abrasion
 - Non-slip cover stays in place during shipment, vibration and when in a vertical orientation, eliminating rework
 - Flush cover design holds 10-12% more wires than traditional duct designs
 - Double scoreline allows quick modification for larger cabling bundles saving installation time leading to a lower installed cost
 - Specially formulated lead-free material eliminates health concerns associated with PVC that contains lead
 - Double restricted slot design retains wire in slot for fast, easy wire installation or removal
- Base and cover sold separately.

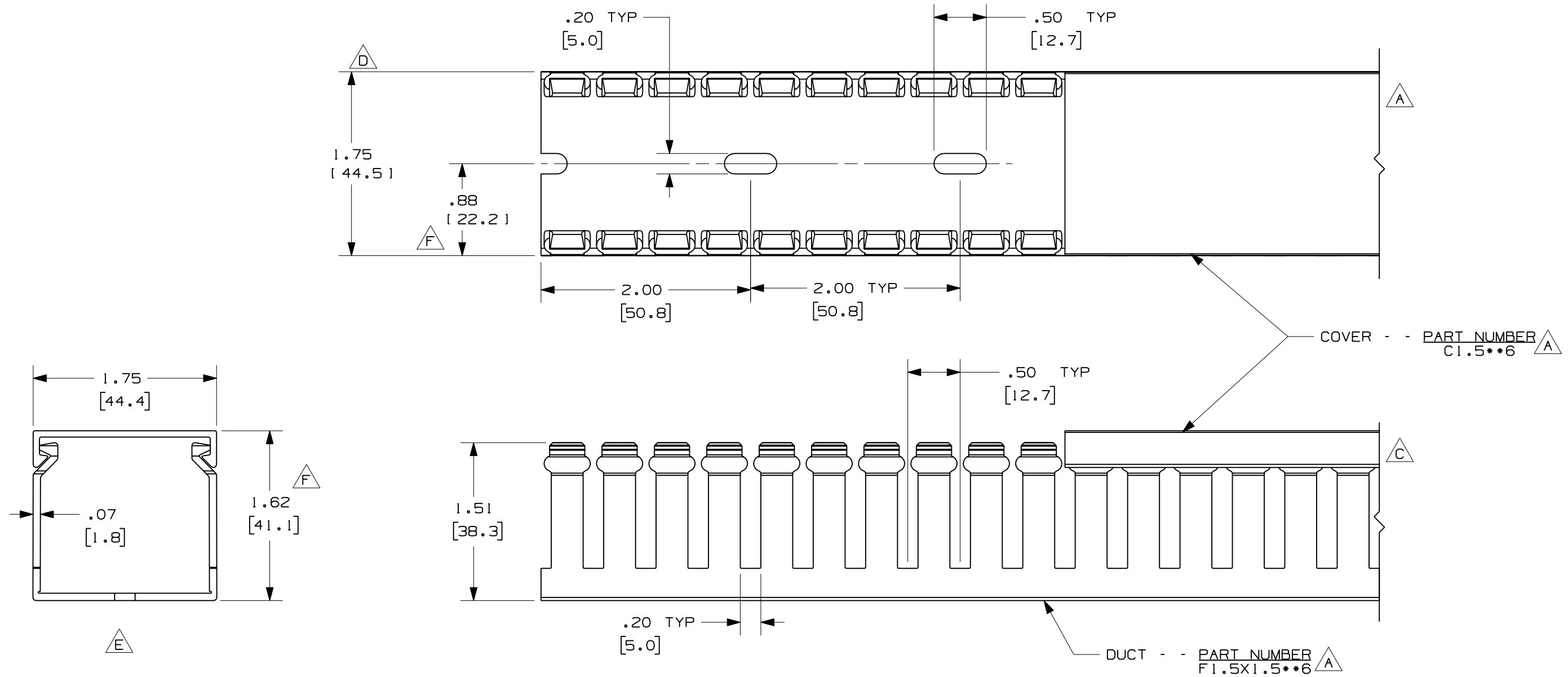
■ Part Number	F1.5X1.5WH6
■ RoHS Compliancy Status	Compliant
■ Part Description	Narrow finger, slotted wiring duct.
■ Material	Lead-Free PVC
■ Color	White
■ CSA Certified	Yes
■ Length (ft.)	6
■ CE Marking	Yes
■ Duct Size W x H (In.)	1.75 x 1.62
■ Duct Size W x H (mm)	44.5 x 41.1
■ Mounting Method	Standard Mounting Holes
■ Pricing Description	Slotted Duct,PVC,1.5"X1.5"X6',White
■ Slot Width (In.)	0.20
■ Slot Width (mm)	5.0
■ Cover Part Number	C1.5WH6

▪ Min. Order UOM FT

▪ Min. Order Qty. 6

▪ BOM Qty. (# of Pkgs.)

THIS COPY IS PROVIDED ON A RESTRICTED BASIS AND IS NOT TO BE USED IN ANY WAY DETRIMENTAL TO THE INTERESTS OF PANDUIT CORP.



- NOTE.**
- ALL DIMENSIONS ARE REFERENCE ONLY.
 - DIMENSIONS IN PARENTHESES ARE METRIC.
 - THE ** DENOTE COLOR.
 - DUCT AND COVER ARE AVAILABLE IN 6 FT [1828.8] LENGTHS

REV	DATE	BY	CHK	DESCRIPTION	DRAWN BY	MAT'L:	SCALE	DWG NO.	DWG SIZE
2	7/23/07	JCST	MKBE	G. ADDED LENGTH NOTE F. CORRECTED DIMENSIONS	JCST	PVC	FULL	36897-766	B
1	9/17/04	JCST	MKBE	E. REMOVED DIMENSION D. ADDED DIMENSION	JCST				
R	5/27/03	JCST	JGG	B. CHANGED DRAWING SIZE A. ADDED TOP VIEW, LABELS, AND NOTE	JCST				

CAD FILENAME/LAYERS: D11000CD_DC/00C

PANDUIT CORP. TINLEY PARK, ILLINOIS

WIRING DUCT - TYPE F WITH COVER
1.5 X 1.5
MARKETING DRAWING

DRAWN BY: JCST
DATE: 5/27/03
CHECKED BY: JGG

MAT'L: PVC

SCALE: FULL

DWG NO.: 36897-766
DWG SIZE: B