

Current refinements (click to remove)

[Search Tips](#) 
 [Region](#) [USA](#) [Product Family](#) [Female Disconnect, Nylon Barrel Insulated – Funnel Entry](#) [Text Search: 'DNF18-250-C'](#)

Your search criteria matched only one product, shown below.

Related Products

- [Male Disconnect, Nylon Barrel Insul...](#)
- [Pneumatic Crimping Tool](#)
- [Contour Crimp™ Control...](#)
- [Wire and Cable Stripping Tools](#)



- Disconnect can be inserted and removed from the male tab without the use of tools for lower installed cost
- Barrel insulated design provides protection from electrical shorts
- Metal insulation grip sleeve crimps to wire insulation, providing protection to the crimp joint during high vibration applications
- Internal barrel serrations assure good wire contact and maximum tensile strength
- Internal wire stop assures proper length of insertion into terminal barrel, providing a higher quality connection
- UL Flammability UL 94V-2/HB, maximum insulation temperature 194° F (90°C)

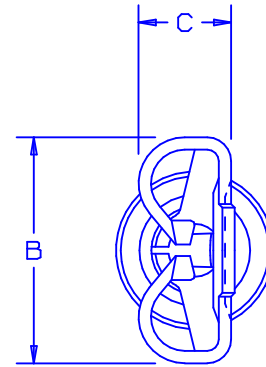
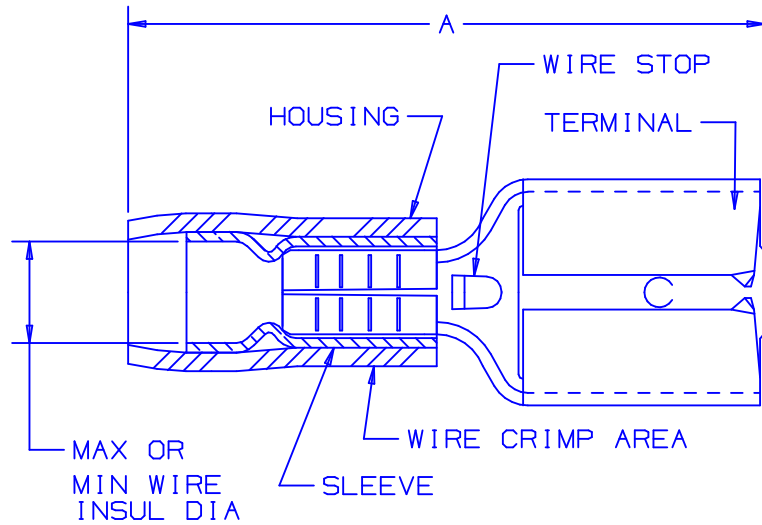
‡UL and CSA approved tooling/product combinations.

Part Number:	DNF18-250-C
RoHS Compliancy Status:	Compliant
Part Description:	Female Disconnect, nylon barrel insulated, funnel entry, 22 – 18 AWG, .250 x .032 tab size.
Product Type:	Disconnects
CSA Certified:	Yes
UL Listed:	Yes
Height (In.):	.12
Length (In.):	.81
Width (In.):	.29
Max. Ins.:	.138
Panduit Color Code:	Red
Tab Size (In.):	.250 x .032
Tool:	CT-600-A‡, CT-1550, CT-1551, CT-2500
Type:	Female
Wire Range:	22 – 18 AWG
Min. Order UOM:	PC
Min. Order Qty.:	100

BOM Qty. (# of Pkgs.)

[Add to My Catalog](#)

 Please [register](#) to utilize the 'Bill of Materials', 'Submit Quotes' and 'My Catalog' features.



NOTES:

1. UL LISTED AND CSA CERTIFIED FOR:
 - A. 300V MAX VOLTAGE RATING
 - B. 194°F (90°C) MAX TEMP RATING
 - C. STRANDED COPPER WIRE ONLY
 - D. 6-12 LBS INITIAL INSERTION/WITHDRAWAL FORCE
2. MATERIAL:
 - A. STAMPING-BRASS, TIN PLATED
 - B. HOUSING-NYLON
 - C. SLEEVE-BRASS, TIN PLATED
3. DIMENSIONS IN BRACKETS ARE IN mm OR mm²
4. INSTALLATION TOOLS: UL/CSA: CT-500
PANDUIT APPROVED: CT-100, CT-160, CT-260, CT-400, CT-460, CT-1551, CT-1550
5. WIRE STRIP LENGTH: 9/32 ^{+1/32} (7.1 ⁺⁸)
6. PKG QTY:
 - C = 100
 - M = 1000

PART NUMBER	TAB SIZE	WIRE RANGE AWG	COLOR	MAX. INSUL.	MIN. INSUL.	DIMENSIONS in.		
						A ±.03	B ±.01	C ±.004
DNF18-250	.250 X .032	22-18	RED	.138 (3.51)	.040 (1.02)	.81 (20.57)	.29 (7.37)	.12 (3.05)
DNF14-250	.250 X .032	16-14	BLUE	.162 (4.11)	.050 (1.27)	.83 (21.08)	.29 (7.37)	.12 (3.05)



07	7/03	KLFU		ADDED INTERNAL SERRATIONS			
06	1/01	KMD	SKB	CAD FILE SPEC. WAS N41200AA_PCD_05	8938	JAC	CCH
05	3/99	JKD		ADDED CT-1551 & CT-1550 TOOLS	07632		
04	12/96	JB	RLS	ADDED TO TABLE "MIN INSUL"	05427	LA	DBH
03	4/95	MS	RLS	REMOVED SLOT FROM TERMINAL	03132	LA	KRS
REV	DATE	BY	CHK	DESCRIPTION	ECN #	CUST	PM

A41200_07



TINLEY PARK, ILLINOIS

FEMALE DISCONNECTS, NYLON INSULATED, FUNNEL .250 X .032

DRAWN BY FES	CHK'D LA	SCALE NONE	DRAWING NO. A41200
-----------------	-------------	---------------	-----------------------