


Current refinements (click  to remove)

[Search Tips](#) 
 [Region](#)  [USA](#)  [Product Family](#)  [Male/Female Coupler, Nylon Fully Insulated – Funnel Entry](#)  [Text Search: 'DNF14-250FIM-C'](#)

Your search criteria matched only one product, shown below.



- Disconnect can be inserted and removed from the male tab without the use of tools for lower installed cost
- Fully insulated design provides protection from electrical shorts
- Metal insulation grip sleeve crimps to wire insulation, providing protection to the crimp joint during high vibration applications
- Internal barrel serrations assure good wire contact and maximum tensile strength
- Internal wire stop assures proper length of insertion into terminal barrel, providing a higher quality connection
- UL Flammability UL 94V-2/HB, maximum insulation temperature 221° F (105°C)
- Coupler, male, and female parts sold separately

**Related Products**

- [Female Disconnect, Nylon Fully Insu...](#)
- [Female Disconnect, Nylon Fully Insu...](#)
- [DiscoGrip™ Male Discon...](#)
- [Hand Operated Plier Type Tools](#)
- [Pneumatic Crimping Tool](#)
- [Contour Crimp™ Control...](#)

Part Number:	DNF14-250FIM-C
RoHS Compliancy Status:	Compliant
Part Description:	Male Disconnect, nylon fully insulated, 16 – 14 AWG, .250 x .032 tab size.
Product Type:	Disconnects
CSA Certified:	Yes
UL Listed:	Yes
Height (In.):	.27
Length (In.):	.90
Width (In.):	.42
Max. Ins.:	.158
Panduit Color Code:	Blue
Tab Size (In.):	.250 x .032
Tool:	CT-600-A, CT-1525‡, CT-2500‡
Type:	Male
Wire Range:	16 – 14 AWG
Min. Order UOM:	PC
Min. Order Qty.:	100

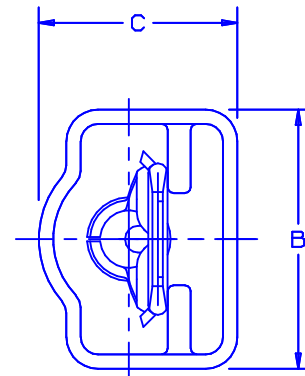
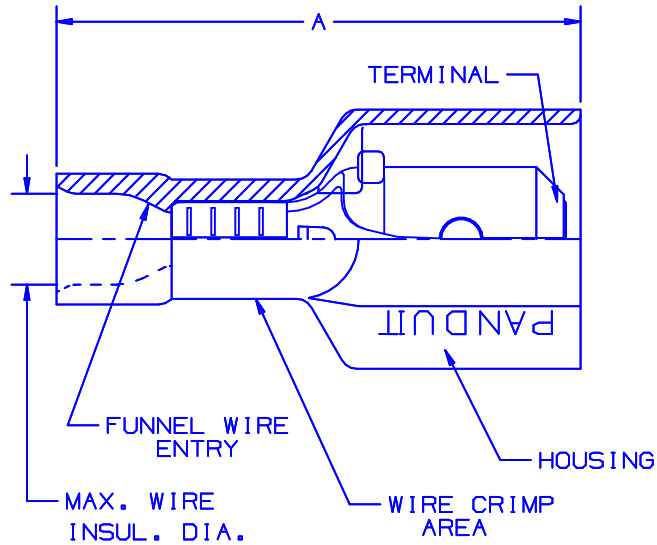
BOM Qty. (# of Pkgs.)

[Add to My Catalog](#)

 Please [register](#) to utilize the 'Bill of Materials', 'Submit Quotes' and 'My Catalog' features.

NOTES:

1. UL LISTED AND CSA CERTIFIED FOR:
  - A. 600V MAX. VOLTAGE RATING.
  - B. 221°F (105°C) MAX. TEMP. RATING (CSA).
  - C. 257°F (125°C) MAX. TEMP. RATING (UL).
  - D. STRANDED COPPER WIRE ONLY.
2. MATERIAL:
  - A. STAMPING-CDA 260 BRASS, NICKEL PLATED
  - B. HOUSING-TYPE 6/6 NYLON
3. DIMENSIONS IN BRACKET ARE IN mm OR mm<sup>2</sup>
4. COLORS ARE TRANSLUCENT
5. WIRE STRIP LENGTH: 9/32 <sup>+1/32</sup><sub>0</sub> (7.1 <sup>+0.8</sup><sub>0</sub>)
6. PACKAGE QTY -C=100  
-M=1000



PART NUMBER	TAB SIZE	WIRE RANGE AWG	COLOR (note 4)	MAX. INSUL.	DIMENSIONS in			CRIMP TOOLS
					A <sup>±.03</sup>	B <sup>±.02</sup>	C <sup>±.02</sup>	
DNF18-250FIM	.250 X .032 (6.3 X 0.8)	22-18 (0.5-1.5)	RED	.133 (3.38)	.90 (22.9)	.42 (10.7)	.27 (6.9)	CT-520 CT-1525
DNF14-250FIM	.250 X .032 (6.3 X 0.8)	16-14 (1.5-2.5)	BLUE	.158 (4.01)	.90 (22.9)	.42 (10.7)	.27 (6.9)	



LISTED  
20H3  
E78522



CERTIFIED  
LR31212

A41325\_07

07	7/03	KLFU		ADDED INTERNAL SERRATIONS			
06	2/01	KMD	JAC	DRAWING NUMBER WAS 41325A	09052	TRO	JAC
05	5/98	TM	RS	ADDED CT-1525 TO TOOL CHART, WAS TIN PLATED	06872		
04	10/94	TH	RS	UPDATED NOTES AND DIMENSIONS	02553	TK	LA
REV	DATE	BY	CHK	DESCRIPTION	ECN #	PM	CUST

**PANDUIT** CORP.

TINLEY PARK, ILLINOIS

LOOSE PC. FULLY INSULATED MALE DISCONNECT  
.250 X .032

DRAWN BY JV    CHK'D LM    SCALE    DRAWING NO. A41325