

Current refinements (click  to remove)

[Search Tips](#) 
 [Region](#) **USA**  [Product Family](#) **Male Disconnect Nylon Fully Insulated - Funnel Entry**  [Text Search:](#) 'DNF10-250FIMB-L'

Your search criteria matched only one product, shown below.



- Disconnect can be inserted and removed from the male tab without the use of tools for lower installed cost
- Fully insulated design provides protection from electrical shorts
- Metal insulation grip sleeve crimps to wire insulation, providing protection to the crimp joint during high vibration applications
- Internal barrel serrations assure good wire contact and maximum tensile strength
- Internal wire stop assures proper length of insertion into terminal barrel, providing a higher quality connection
- UL Flammability UL 94V-2/HB, maximum insulation temperature 221° F (105°C)
- Coupler, male, and female parts sold separately

**Related Products**

- [Supra-Grip™ Female Dis...](#)
- [Male/Female Coupler, Nylon Fully In...](#)
- [Female Disconnect, Nylon Fully Insu...](#)
- [Female Disconnect, Nylon Fully Insu...](#)
- [Hand Operated Plier Type Tools](#)
- [Contour Crimp™ Control...](#)
- [More...](#)

Part Number:	DNF10-250FIMB-L
RoHS Compliancy Status:	Compliant
Part Description:	Male Disconnect, nylon fully insulated, oversized housing, butted seam, 12 – 10 AWG, .250 x .032 tab size.
Product Type:	Disconnects
CSA Certified:	Yes
UL Listed:	Yes
Height (In.):	.36
Length (In.):	.96
Width (In.):	.45
Max. Ins.:	.220
Panduit Color Code:	Yellow
Tab Size (In.):	.250 x .032
Tool:	CT-600-A‡, CT-1550‡, CT-1551‡, CT-2500‡
Type:	Male
Wire Range:	12 – 10 AWG
Min. Order UOM:	PC
Min. Order Qty.:	50

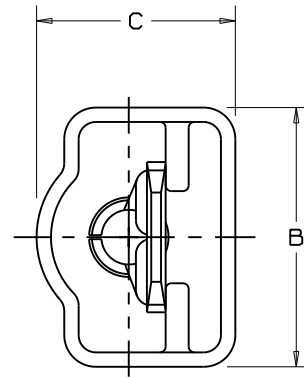
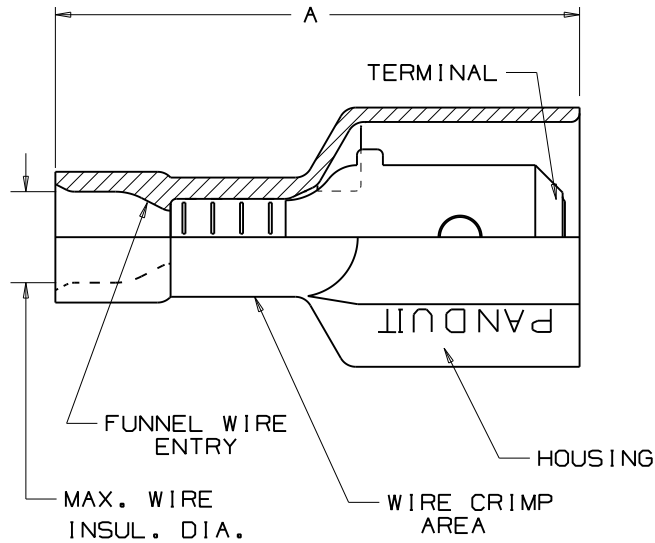
BOM Qty. (# of Pkgs.)

[Add to My Catalog](#)

 Please [register](#) to utilize the 'Bill of Materials', 'Submit Quotes' and 'My Catalog' features.

THIS COPY IS PROVIDED ON A RESTRICTED BASIS AND IS NOT TO BE USED IN ANY WAY DETRIMENTAL TO THE INTERESTS OF PANDUIT CORP.

NOTES:



1. UL LISTED AND CSA CERTIFIED FOR:
  - A. 600V MAX VOLTAGE RATING
  - B. 221° F (105 C) MAX TEMP. RATING (CSA)
  - C. 257° F (125°C) MAX TEMP. RATING (UL)
  - D. STRANDED COPPER WIRE ONLY.
2. MATERIAL:
  - A. STAMPING- BRASS, NICKEL PLATED  
- COPPER, NICKEL PLATED  
(FOR DNF10-250F1MB)
  - B. HOUSING-TYPE 6/6 NYLON
3. DIMENSIONS IN BRACKETS ARE IN mm OR mm<sup>2</sup>
4. COLORS ARE TRANSLUCENT
5. PACKAGE QTY. -L=50  
-D=500
6. WIRE STRIP LENGTH:  $9/32^{+1/32}_{-0}$  (7.1<sup>+0.8</sup><sub>-0</sub>)  
 $3/8^{+1/32}_{-0}$  (9.5<sup>+0.8</sup><sub>-0</sub>)  
(FOR DNF10-250F1MB)



LISTED  
20H3  
E78522



CERTIFIED  
LR31212

CRIMP  
TOOLS

PART NUMBER	TAB SIZE	WIRE RANGE AWG (mm <sup>2</sup> )	COLOR (note 4)	MAX. INSUL.	DIMENSIONS in			CRIMP TOOLS
					A ±.03	B ±.01	C ±.01	
DNF18-250F1MB	.250 X .032 (6,3 X 0,8)	22-18 (1,5-1,0)	RED	.136 (3,45)	.91 (23,1)	.45 (11,4)	.34 (8,6)	CT-520 CT-1525
DNF14-250F1MB	.250 X .032 (6,3 X 0,8)	16-14 (1,5-2,5)	BLUE	.160 (4,06)	.91 (23,1)	.45 (11,4)	.34 (8,6)	
DNF10-250F1MB	.250 X 0.32 (6,3 X 0,8)	12-10 (4,0-6,0)	YELLOW	.220 (5,59)	.96 (24,4)	.45 (11,4)	.36 (9,1)	CT-1550 CT-1551

REV	DATE	BY	CHK	DESCRIPTION	ECN #	CUST	PM
10	01/08	BCT	LCA	ASTERIK REMOVED FROM CSA LOGO			LCA RRE

**PANDUIT CORP.** TINLEY PARK, ILLINOIS

LOOSE PC. FULLY INSULATED UNI-MALE DISCONNECT  
.250 X .032

SCALE DRAWING NO. A41402

DRAWN BY JV CHK'D SCALE DRAWING NO. A41402