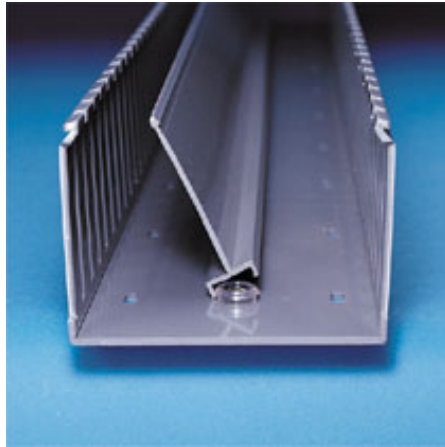




DB-C

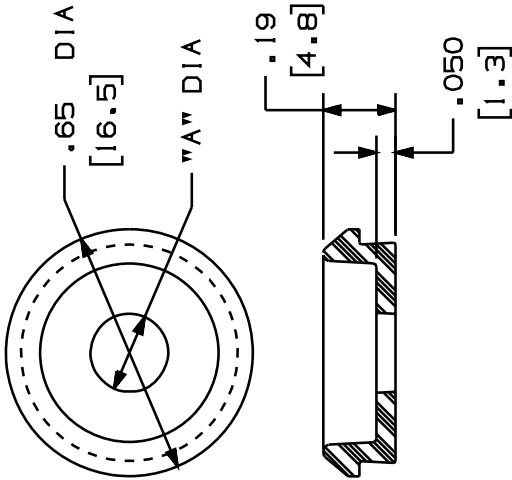


- Installed when mounting duct
- Acts as a shroud around the screw to protect wires from abrasion
- Install mounting bases to the duct channel, locate within 2" of each divider wall end and at least every 12" along the length.

■ Part Number	DB-C
■ RoHS Compliancy Status	Compliant
■ Part Description	Mounting base.
■ Material	ABS
■ Pricing Description	Duct Divider Wall Mounting Base, ABS
■ Used with Anchors	PANDUIT NR1 or #8 or #10 screw
■ Min. Order UOM	PC
■ Min. Order Qty.	100
■ BOM Qty. (# of Pkgs.)	

THIS COPY IS PROVIDED ON A RESTRICTED BASIS AND IS NOT TO BE USED IN ANY WAY DETRIMENTAL TO THE INTERESTS OF PANDUIT CORP.

PANDUIT PART NO. *	TO BE USED WITH:	"A" DIA.	WEIGHT
DB	U.S. F-DUCT	.205(5.2)	.123 LB/100 PCS (56 g/100 PCS)
DBM	METRIC F-DUCT	.250(6.4)	



NOTES:

- 1. SEE CURRENT CATALOG FOR ADDITIONAL PART NUMBER SUFFIXES TO INDICATE COLOR AND OR PACKAGE QUANTITY.
- 2. DIMENSIONS IN PARENTHESES ARE IN METRIC.

CAD FILENAME/LAYERS

D34301_DBC_MB_C (D)

PANDUIT

CORP. TINLEY PARK, ILLINOIS

F-DUCT DIVIDER WALL MOUNTING DISK
(DB, DBM)
CUSTOMER DRAWING

UNLESS OTHERWISE SPECIFIED,
DIMENSIONAL TOLERANCES ARE:
(.XX) ± .03(1.8) ANGLES ±
(.XX) ± .010(.3)

UNLESS OTHERWISE SPECIFIED,
ALL DIMENSIONS ARE GIVEN
IN INCHES, THIRD ANGLE PROJECTION.

DRAWN BY: DW

DATE: 5/11/93

CHK'D:

MATERIAL: POLYCARBONATE

SCALE: NONE

DRAWING NO. 34301-09

DWG SIZE A

RELEASED TO PRODUCTION

34301-09

CUST SUP

ECN - R

DESCRIPTION

REV DATE BY CHK

R 5/11/93 DW