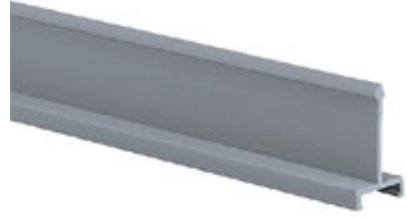




## D4H6



- The wiring duct divider wall is mounted inside any PVC wiring duct in order to create multiple channels within the wiring duct. Simply use the mounting bases when installing the duct and the divider wall will "snap" on.
- Wiring duct divider wall can be mounted inside any type of Panduit® PVC wiring duct to create multiple channels
  - Simply install the divider wall base when mounting the duct and snap the divider wall onto the mounting base, DB-C
  - All versions snap onto DB-C mounting base
  - Divider wall heights 2" and greater have a scoreline feature allowing sections to be removed leaving a smooth edge
  - Meets UL508/508A insulation material requirement for barrier between conductors
  - UL 94 flammability rating of V-0

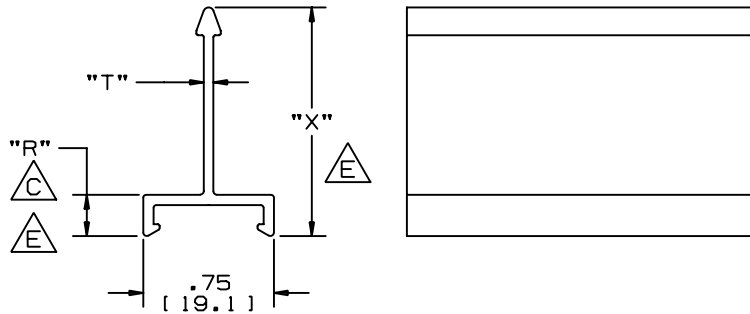
■ Part Number	D4H6
■ RoHS Compliancy Status	Compliant
■ Part Description	Solid divider wall.
■ Material	Lead-free PVC
■ Color	Light Gray
■ Length (ft.)	6
■ For Nominal Duct Height (In.)	4.00
■ For Nominal Duct Height (mm)	100
■ Pricing Description	Solid Duct Divider Wall, PVC, 4"H X 6'
■ Min. Order UOM	FT
■ Min. Order Qty.	6
■ BOM Qty. (# of Pkgs.)	

THIS COPY IS PROVIDED ON A RESTRICTED BASIS AND IS NOT TO BE USED IN ANY WAY DETRIMENTAL TO THE INTERESTS OF PANDUIT CORP.

PANDUIT PART NUMBER	$\triangle B$ "X" $\triangle E$	$\triangle A$ "X" TOL.	$\triangle B$ "T" $\triangle E$	$\triangle A$ "T" TOL.	$\triangle C$ "R" $\triangle E$	$\triangle C$ "R" TOL.	LENGTH	WEIGHT
D1H6	.80 (20.3)	$\pm .03$ (.8)	.06 (1.5)	$\pm .012$ (.3)	.23 (5.9)	$\pm .03$ (.8)	72.00 in $\pm .13$ in (1829mm $\pm 3.3$ mm)	.065 LB/FT (.096 Kg/M)
D1.5H6	1.31 (33.3)	$\pm .03$ (.8)	.06 (1.5)	$\pm .012$ (.3)	.23 (5.9)	$\pm .03$ (.8)		.083 LB/FT (.123 Kg/M)
D2H6	1.79 (45.3)	$\pm .03$ (.8)	.07 (1.7)	$\pm .012$ (.3)	.24 (6.0)	$\pm .03$ (.8)		.096 LB/FT (.143 Kg/M)
D3H6	2.74 (69.7)	$\pm .05$ (1.3)	.09 (2.2)	$\pm .016$ (.4)	.26 (6.5)	$\pm .03$ (.8)		.165 LB/FT (.245 Kg/M)
D4H6	3.53 (89.8)	$\pm .06$ (1.5)	.11 (2.8)	$\pm .020$ (.5)	.26 (6.5)	$\pm .03$ (.8)		.285 LB/FT (.426 Kg/M)

**NOTES:**

- SEE CURRENT CATALOG FOR ADDITIONAL PART SUFFIXES TO INDICATE COLOR AND OR PACKAGE QUANTITY.
- THIS PART IS INTENDED TO BE USED WITH MOUNTING BASE DB-C IN ORDER TO SUCCEED AS A DIVIDER WALL APPLICATION.
- DIMENSIONS IN PARENTHESIS ARE IN METRIC.



CAD FILENAME/LAYERS D34301\_DC\_DH6\_F\_DIV\_02B.prt

								<b>PANDUIT</b> CORP. TINLEY PARK, ILLINOIS	
								SOLID DIVIDER WALL FOR WIRING DUCT & FIBER DUCT (D1H6, D1.5H6, D2H6, D3H6, D4H6) CUSTOMER DRAWING	
3	4/14/04	JCST	JKG	E. MODIFIED DIM. "X" & "R" IN VIEW AND CHART D. MODIFIED TITLE	34301-05	HIW	HIW	UNLESS OTHERWISE SPECIFIED, DIMENSIONAL TOLERANCES ARE: (.X) $\pm$ (.XXX) $\pm$ (.XX) $\pm .06$ (1.5) ANGLES $\pm$	UNLESS OTHERWISE SPECIFIED, ALL DIMENSIONS ARE GIVEN IN INCHES, THIRD ANGLE PROJECTION.
2	3-11-94	DW	CEF	C. REV'D DIM "T" AND ADDED DIM "R".	34301-05	CEF	CEF		
1	1-28-94	DW	CEF	B. REVISED DIMENSIONS. A. ADDED TOLERANCES.	34301-05	CEF		DRAWN BY DW	SCALE NONE
R	5-5-93	DW	KRKE	RELEASED TO PRODUCTION	34301-05	CEF		DATE 5-5-93	
REV	DATE	BY	CHK	DESCRIPTION	ECN - R	CUST	SUP	CHK'D KRKE	DWG SIZE A

MAT'L: PVC