


Current refinements (click  to remove)

[Search Tips](#) 
 [Region](#)  [USA](#) [Product Family](#)  [Disconnect Adapter, Non-Insulated](#) [Text Search: 'D-250A-M'](#)
Your search criteria matched only one product, shown below.
Related Products

- [Male Disconnect, Non-Insulated - Bu...](#)
- [Female Disconnect, Non-Insulated &#...](#)
- [Wire and Cable Stripping Tools](#)



- Couples two female disconnects to one male disconnect (all .250 x .032)
- Multiple connection points allow additional circuits to be added to existing equipment without expensive rework
- Disconnect can be inserted and removed from the male tab without the use of tools for lower installed cost

Part Number:	D-250A-M
RoHS Compliancy Status:	Compliant
Part Description:	Disconnect Adapter, 22-18 AWG wire, couples two female and one male tab (all .250 X .032), non-insulated.
Product Type:	Disconnects
Length (In.):	.82
Width (In.):	.57
Angle:	extra angle
Tab Size (In.):	.250 x .032
Min. Order UOM:	PC
Min. Order Qty.:	1000
BOM Qty. (# of Pkgs.)	

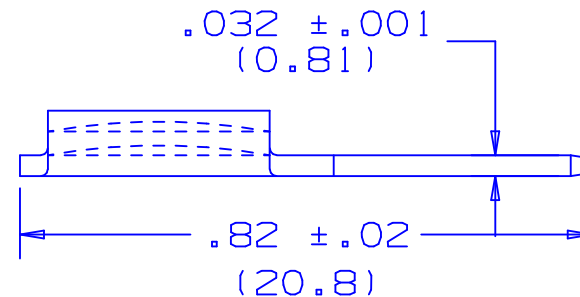
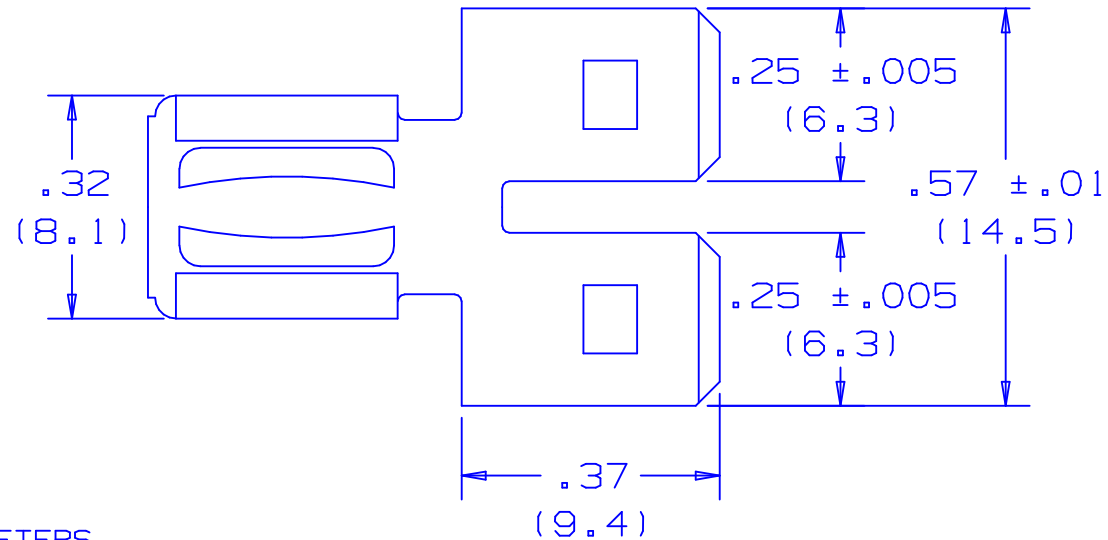
[Add to My Catalog](#)

 Please [register](#) to utilize the 'Bill of Materials', 'Submit Quotes' and 'My Catalog' features.

View Content Details
[Evaluate](#)
[Design a Solution](#)
[Install & Maintain](#)
Part Drawings:
 [Disconnect Adapter, Non-Insulated: D-2...](#)
Design a Solution
Part Drawings:
 [Disconnect Adapter, Non-Insulated: D-250A pdf](#)

NOTES:

1. D-250A DISCONNECT ADAPTER
COUPLES TWO FEMALE DISCONNECTS
TO ONE MALE DISCONNECT
ALL .250 X .032 (6.3 X 0.8)
2. MATERIAL:
A. STAMPING: TIN PLATED BRASS
3. PACKAGE QTY:
A. STD: -C = 100
B. BULK: -M = 1000
4. DIMENSIONS IN BRACKETS ARE IN MILLIMETERS
5. MAXIMUM OPERATING TEMPERATURE: 130 C°



06	9/04	JHNU		ADDED NOTE 5.			
05	1/01	RM	SKB	FILESPEC WAS N41323AA_PCD_04	08925	JAC	CCH
04	12/94	TH		ADDED TOLERANCES	02707		
03	5/92	BK	RLS	UPDATED NOTES TAB WIDTH DIMENSION WAS .25 (6.4)	00967		KS
2	8-88	DW		REDRAWN WITH REVISIONS			JB
REV	DATE	BY	CHK	DESCRIPTION	ECN #	CUST	PM

A41323_06

PANDUIT

CORP.

TINLEY PARK, ILLINOIS

.250 (6.3) DISCONNECT ADAPTER D-250A

DRAWN BY	CHK'D	SCALE	DRAWING NO.
DAW	CJH	NONE	A41323