

Current refinements (click  to remove)

[Search Tips](#)
 [Region](#) **USA**  [Product Family](#) **Two-Hole, Offset Floating Tongue Lug**  [Text Search](#): 'CO35-36-QY'

**Your search criteria matched only one product, shown below.**

For Use with Stranded Copper Code Conductors

- Made from high strength electrolytic copper to provide premium electrical and mechanical performance
- Wide wire range-taking capability minimizes inventory requirements
- Internal pressure bar and V-bottom collar provide uniform clamping force on conductor to assure positive contact between conductor and connector
- Inspection window to visually assure full conductor insertion
- Plated steel set screw provides high strength, durable electrical contact between conductor and connector
- UL Listed and CSA Certified for use up to 600 V
- Available with NEMA hole sizes and spacing

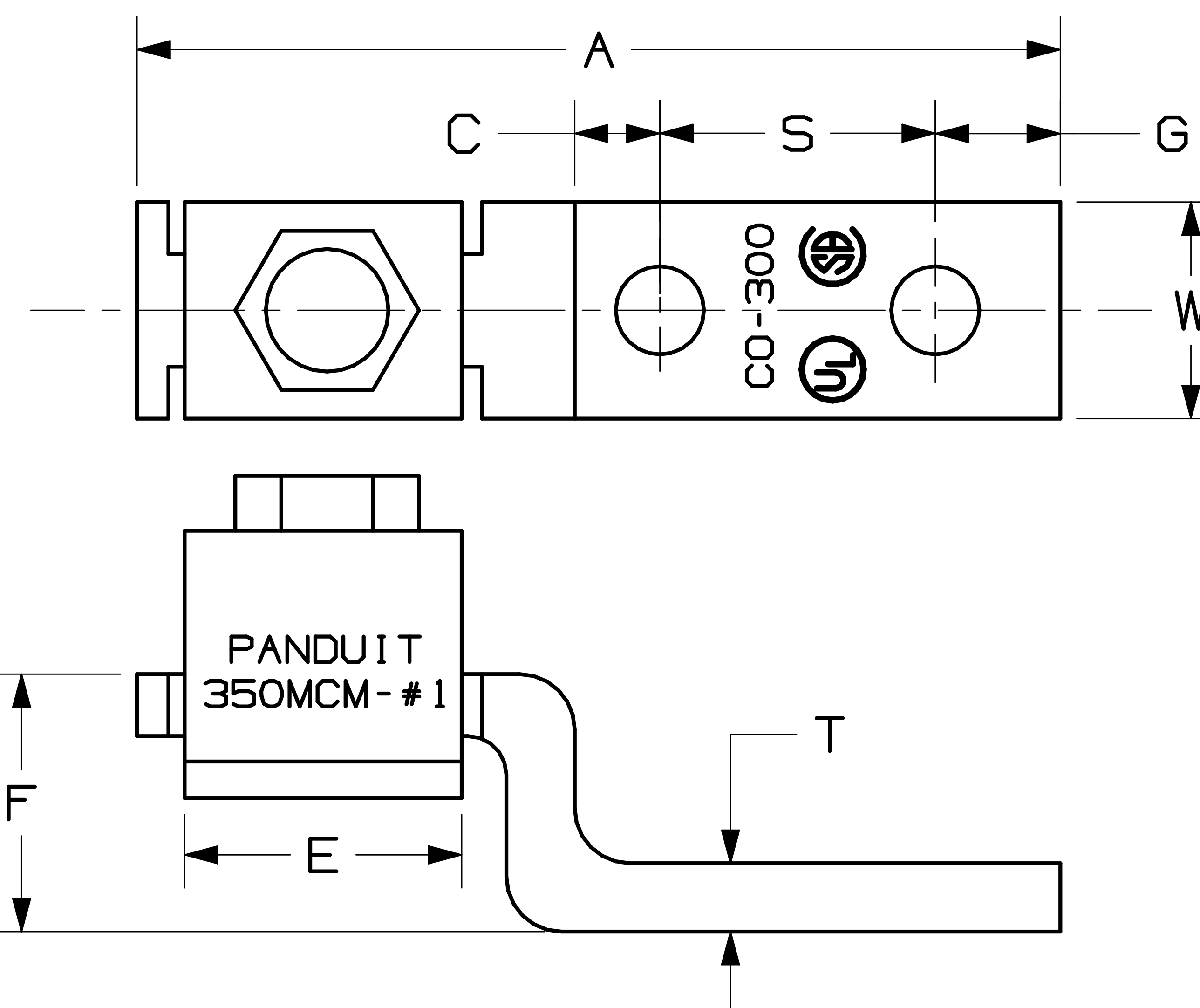


Part Number:	CO35-36-QY
RoHS Compliancy Status:	Compliant
Note:	CO35-36-QY replaces CO35-36-Q
Part Description:	Copper, single barrel, two-hole, offset tongue lug.
Product Type:	Mechanical Connectors - Lugs
CSA Certified:	Yes
UL Listed:	Yes
Height (In.):	.52
Height (mm):	13.2
Length (In.):	2.19
Length (mm):	55.6
Copper Conductor Size Range:	#14 AWG – #6 AWG, (2) #10 AWG, (2) #12 AWG, (2) #14 AWG, (1) #10 AWG with (1) #12 AWG, (1) #12 AWG with (1) #14 AWG
Stud Hole Size (In.):	3/16
Stud Hole Spacing (In.):	1.00
Tongue Width (In.):	.38
Collar Length:	.44
Current Rating (Amps):	50
Tightening Torque (In-Lbs):	120
Tongue Length:	1.50
Tongue Thickness:	.07
Tongue Width (mm):	9.7
Wire Range (mm <sup>2</sup> ):	2.5 – 16
Min. Order UOM:	PC
Min. Order Qty.:	1
BOM Qty. (# of Pkgs.)	

THIS COPY IS PROVIDED ON A RESTRICTED BASIS AND IS NOT TO BE USED IN ANY WAY DETRIMENTAL TO THE INTERESTS OF PANDUIT CORP.

NOTES:

1. UL AND CSA LOGOS APPEAR ON ALL PARTS AS SHOWN.
2. FOR USE WITH COPPER WIRE ONLY
3. MATERIAL: COPPER
4. IF HEX KEY SIZE IS NOT GIVEN, FLAT HEAD SCREW IS USED.
5. \* NEMA HOLE SIZES AND SPACING.
6. ADDITIONAL MULTIPLE WIRE COMBINATIONS FOR CD35-36-Q ARE:
  - A. TWO-#10'S
  - B. TWO-#12'S
  - C. TWO-#14'S
  - D. ONE-#10 WITH ONE-#12
  - E. ONE-#12 WITH ONE-#14
7. ADDITIONAL MULTIPLE WIRE COMBINATIONS FOR CD70-14-Q ARE:
  - A. ONE-#8 WITH ONE-#4
  - B. ONE-#8 WITH ONE-#6
8. THIS PART IS ROHS COMPLIANT.



PART NUMBER	COPPER CONDUCTOR RANGE	CURRENT RATING (AMPS)	BOLT HOLE SIZE	HEX KEY SIZE	DIMENSIONS IN INCHES								STD. PKG. QTY.	STD. CTN. QTY.
					A	C	E	F	G	S	T	W		
C035-36-QY	#14-#6	50	3/16	---	2.19	.25	.44	.41	.22	1.00	.07	.38	25	100
C070-14-QY	#12-#1	90	1/4	---	2.50	.56	.50	.52	.25	1.00	.09	.50	25	100
C0125-14-QY	#2-#1/0	125	1/4	---	2.97	.41	.63	.64	.44	1.00	.13	.63	25	100
C0225-56-QY	#6-#4/0	225	5/16	5/8	3.62	.75	1.00	.97	.50	1.00	.13	1.00	25	100
C0300-38-3Y	#1-350	300	3/8	3/4	5.69	1.25	1.23	1.38	.81	1.87	.19	1.00	3	12
*C0400-38-3Y	#1/0-500	400	3/8	3/4	6.00	1.06	1.53	1.39	.94	1.75	.19	1.50	3	12
*C0650-12-3Y	600-1000	650	1/2	1-1/8	6.25	.69	1.88	2.00	1.19	1.75	.25	2.00	3	12

CAD FILENAME/LAYERS C41547\_01

PANDUIT CORP. TINLEY PARK, ILLINOIS

CO SERIES COPPER MECHANICAL LUGS

UNLESS OTHERWISE SPECIFIED, DIMENSIONAL TOLERANCES ARE:  
 (.X) ± (.XXX) ±  
 (.XX) ± ANGLES ±

UNLESS OTHERWISE SPECIFIED, ALL DIMENSIONS ARE GIVEN IN INCHES, THIRD ANGLE PROJECTION.

01	3/06	JHNU	LEM	REVISED ROHS NOTE	PC00334									
00	3/06	JHNU	LEM	DRAWING RELEASED - ROHS COMPLIANT	PC00332									
REV	DATE	BY	CHK	DESCRIPTION	ECN	CUST	PM							

DRAWN BY	JHNU	MAT'L:	
DATE	3/06		COPPER
CHK'D			
SCALE	N/A		
DRAWING NO.	C41547	DWG SIZE	A