



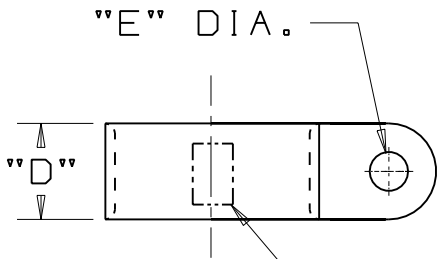
CCS50-S8-C



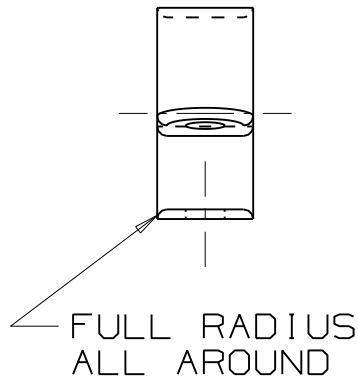
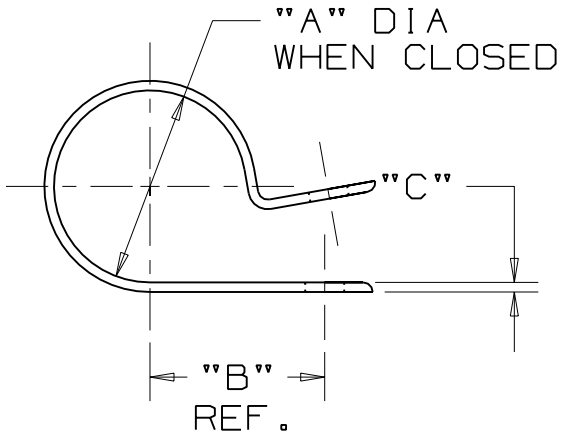
- Durable nylon cable clamps

• Part Number	CCS50-S8-C
• RoHS Compliancy Status	Compliant
• Part Description	Fixed Diameter Cable Clamp
• Product Type	Mounting Device
• Material	Nylon 6.6
• Color	Natural
• UL Recognized	E136577
• Diameter (In.)	.17
• Diameter (mm)	4.2
• Width (In.)	.37
• Width (mm)	9.4
• Bundle Offset (mm)	15.2
• Bundle Offset (In.)	.60
• Environment	Indoors
• Flammability Rating	UL94 V-2
• Hole Diameter (In.)	.17
• Hole Diameter (mm)	4.2
• Max. Bundle Diameter (In.)	.50
• Max. Bundle Diameter (mm)	12.7
• Mounting Method	#8 (M4) Screw
• Pricing Description	Fixed Dia Clamp, .50" (12.7mm) Bundle, #8 Screw (M4), WH
• Screw Size	#8 (M4)
• Screw Size Metric	M4
• Type Of Application	Standard
• Min. Order UOM	PC

THIS COPY IS PROVIDED ON A RESTRICTED BASIS AND IS NOT TO BE USED IN ANY WAY DETRIMENTAL TO THE INTERESTS OF PANDUIT CORP.



FRACTIONAL PART SIZE NOTED HERE.



*PANDUIT PART NUMBER	"A" in/(mm)	"B" REF. in/(mm)	"C" in/(mm)	"D" in/(mm)	"E" in/(mm)	WEIGHT lbs (g) / 100 pcs
CCS12-S8	0.12 (3.1)	0.33 (8.4)	0.050 (1.3)	0.37 (9.4)	0.167 (4.2)	0.09 (40.2)
CCS19-S8	0.19 (4.8)	0.43 (10.9)	0.050 (1.3)	0.37 (9.4)	0.167 (4.2)	0.11 (49.3)
CCS25-S8	0.25 (6.3)	0.41 (10.4)	0.050 (1.3)	0.37 (9.4)	0.167 (4.2)	0.13 (57.9)
CCS25-S10	0.25 (6.3)	0.41 (10.4)	0.050 (1.3)	0.37 (9.4)	0.203 (5.1)	0.12 (52.0)
CCS31-S8	0.31 (7.9)	0.49 (12.4)	0.050 (1.3)	0.37 (9.4)	0.167 (4.2)	0.14 (62.3)
CCS38-S8	0.38 (9.5)	0.59 (15.0)	0.050 (1.3)	0.37 (9.4)	0.167 (4.2)	0.16 (70.7)
CCS44-S8	0.44 (11.1)	0.57 (14.5)	0.050 (1.3)	0.37 (9.4)	0.167 (4.2)	0.17 (77.0)
CCS50-S8	0.50 (12.7)	0.60 (15.2)	0.050 (1.3)	0.37 (9.4)	0.167 (4.2)	0.18 (80.0)

NOTES:

- *1. SEE CURRENT PRICE SHEET FOR PART NUMBER SUFFIX DESIGNATION FOR PACKAGE SIZE AND PART COLOR.

(DIMENSIONS IN PARENTHESES ARE IN METRIC.)

CAD FILENAME/LAYERS

G00239DV_PB_CCS_02

PANDUIT

CORP.

TINLEY PARK, ILLINOIS

CCS - CABLE CLAMP

UNLESS OTHERWISE SPECIFIED,
DIMENSIONAL TOLERANCES ARE:
(.X) ± 0.1(2.5) (.XXX) ± 0.015(.4)
(.XX) ± 0.05(1.3) ANGLES ± 5°

UNLESS OTHERWISE SPECIFIED,
ALL DIMENSIONS ARE GIVEN
IN INCHES, THIRD ANGLE PROJECTION.

REV	DATE	BY	CHK	DESCRIPTION	ECN	R	CUST	SUP	DRAWN BY	MAT'L:	SCALE	DWG
2	2/7/06	Jad		UPDATE LOCATION FOR FRACTIONAL PART SIZE INDICATOR	G00239DV	2			CJG	NYLON 6/6	NONE	A
									DATE		DRAWING NO.	SIZE
									6/26/96		GB0239DV	A
									CHK'D			