

Current refinements (click  to remove)

[Search Tips](#) 
 [Region](#) **USA**  [Product Family](#) **One-Hole, Offset Floating Tongue Lug**  [Text Search](#): 'CB35-36-CY'

**Your search criteria matched only one product, shown below.**


For Use with Stranded Copper Code Conductors

- Made from high strength electrolytic copper to provide premium electrical and mechanical performance
- Wide wire range-taking capability minimizes inventory requirements
- Internal pressure bar and V-bottom collar provide uniform clamping force on conductor to assure positive contact between conductor and connector
- Inspection window to visually assure full conductor insertion
- Plated steel set screw provides high strength, durable electrical contact between conductor and connector
- UL Listed and CSA Certified for use up to 600 V

Part Number:	CB35-36-CY
RoHS Compliancy Status:	Compliant
Note:	CB35-36-CY replaces CB35-36-C
Part Description:	Copper, single barrel, one-hole, offset tongue lug.
Product Type:	Mechanical Connectors - Lugs
CSA Certified:	Yes
UL Listed:	Yes
Height (In.):	.52
Height (mm):	13.2
Length (In.):	1.19
Length (mm):	30.2
Copper Conductor Size Range:	#14 AWG – #6 AWG, (2) #10 AWG, (2) #12 AWG, (2) #14 AWG, (1) #10 AWG with (1) #12 AWG, (1) #12 AWG with (1) #14 AWG
Stud Hole Size (In.):	3/16
Tongue Width (In.):	.38
Collar Length:	.44
Current Rating (Amps):	50
Tightening Torque (In-Lbs):	120
Tongue Length:	.47
Tongue Thickness:	.07
Tongue Width (mm):	9.7
Wire Range (mm <sup>2</sup> ):	2.5 – 16
Min. Order UOM:	PC
Min. Order Qty.:	1
BOM Qty. (# of Pkgs.)	
Add to My Catalog	

THIS COPY IS PROVIDED ON A RESTRICTED BASIS AND IS NOT TO BE USED IN ANY WAY DETRIMENTAL TO THE INTERESTS OF PANDUIT CORP.

PART NUMBER	COPPER CONDUCTOR SIZE RANGE	CURRENT RATING (AMPS)	BOLT HOLE SIZE	HEX SIZE	DIMENSIONS IN INCHES					
					A	W	G	C	T	F
CB25-18-CY	#14-#10	25	1/8	---	1.00	.32	.19	.28	.07	.28
CB35-36-CY	#14-#6	50	3/16	---	1.19	.38	.23	.25	.07	.41
CBA70-14-CY	#14-#4	70	1/4	---	1.31	.50	.25	.28	.08	.40
CB70-14-CY	#12-#2	90	1/4	---	1.55	.50	.25	.34	.09	.52
CB125-14-QY	#2-#1/0	125	1/4	---	1.97	.63	.50	.28	.13	.64
CB175-38-QY	#4-#3/0	175	3/8	5/16	2.19	.75	.44	.50	.16	.75
CB225-56-QY	#6-#4/0	225	5/16	5/8	2.38	1.00	.47	.56	.13	.91
CB300-38-QY	#1-#350	300	3/8	3/4	3.16	1.00	.50	.94	.19	1.37
CB400-38-3Y	#1/0-500	400	3/8	3/4	4.25	1.50	.88	1.00	.19	1.37
CB650-12-3Y	600-1000	650	1/2	1-1/8	4.63	2.00	1.16	.87	.25	1.97



LISTED  
509D



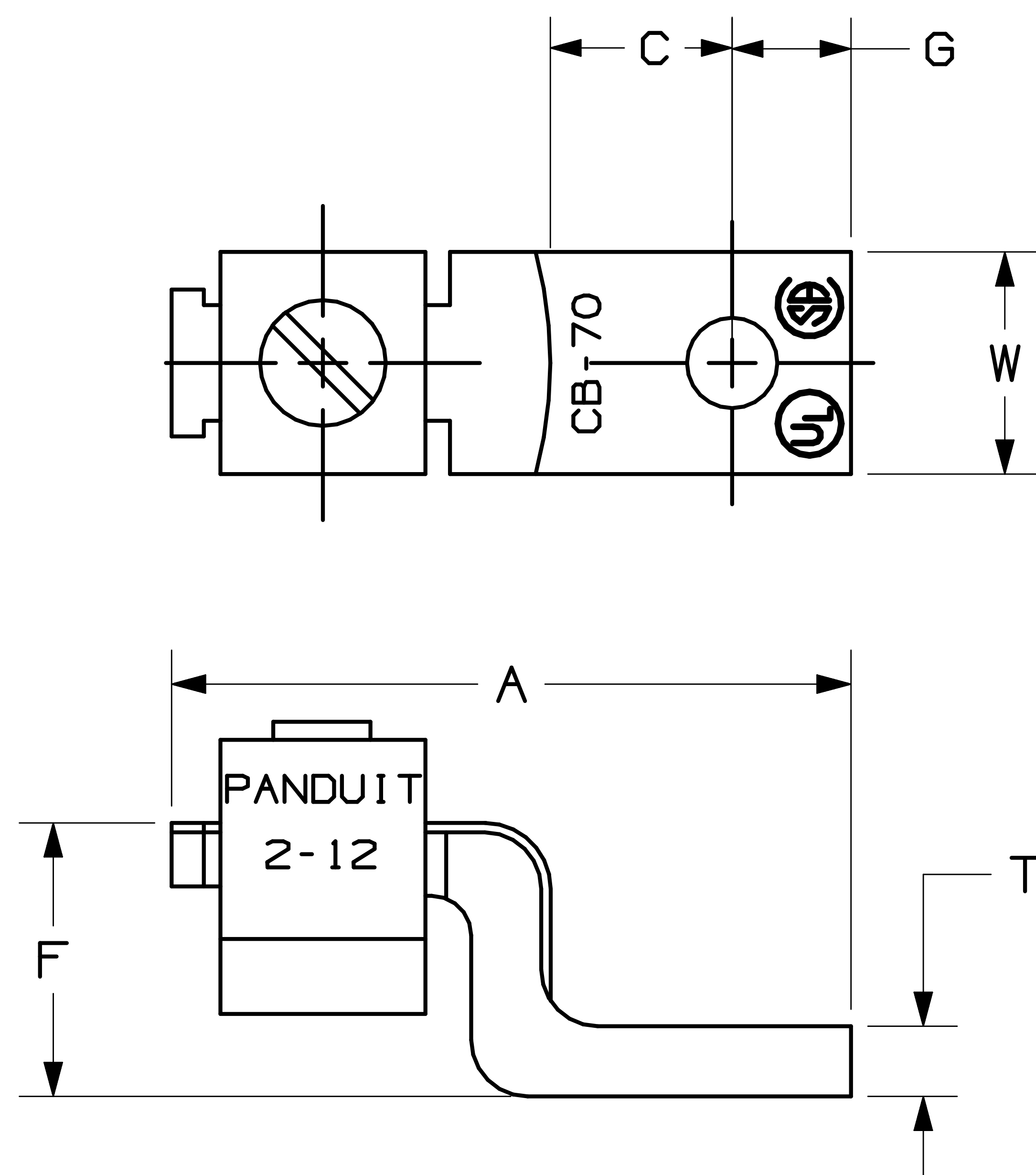
CERTIFIED  
70732

NOTES:

- UL AND CSA LOGOS APPEAR ON ALL PARTS AS SHOWN.
- "P" PANDUIT LOGO APPEARS ON PART NO. CB25-18-C ONLY. ALL OTHER PARTS EXCLUDING CB25-18-C, STAMPED "PANDUIT".
- FLAT HEAD SET SCREW IS USED IF HEX SIZE IS NOT GIVEN.
- FOR USE WITH COPPER WIRE ONLY.
- MATERIAL: COPPER
- ADDITIONAL MULTIPLE WIRE COMBINATIONS FOR CB35-36-C ARE:
 

A. TWO-#10'S	D. ONE-#10 WITH ONE-#12
B. TWO-#12'S	E. ONE-#12 WITH ONE-#14
C. TWO-#14'S	
- ADDITIONAL MULTIPLE WIRE COMBINATIONS FOR CB70-14-Q ARE:
 

A. ONE-#8 WITH ONE-#4
B. ONE-#8 WITH ONE-#6
- THESE PARTS ARE ROHS COMPLIANT.



CAD FILENAME/LAYERS	C41663_00
PANDUIT CORP. TINLEY PARK, ILLINOIS	
"CB" SERIES MECHANICAL LUGS CUSTOMER DRAWING	

					UNLESS OTHERWISE SPECIFIED, DIMENSIONAL TOLERANCES ARE: (.X) ±                    (.XXX) ± (.XX) ±                    ANGLES ±			UNLESS OTHERWISE SPECIFIED, ALL DIMENSIONS ARE GIVEN IN INCHES, THIRD ANGLE PROJECTION.		
					DRAWN BY JHNU		MAT'L: COPPER		SCALE NONE	
00	3/06	JHNU	LEM	DRAWING RELEASED - ROHS COMPLIANT	PC00348	DATE 3/06		DRAWING NO. C41663		DWG A SIZE
REV	DATE	BY	CHK	DESCRIPTION	ECN	CUST	PM			