

Current refinements (click  to remove)

[Search Tips](#) 
 [Region](#)  [USA](#) [Product Family](#)  [Butt Splice, Vinyl Insulated](#) [Text Search: 'BSV18X-CY'](#)
Your search criteria matched only one product, shown below.

- Expanded wire entry designed to accommodate wire with a larger insulation thickness
- Designed to splice two solid or stranded wires together to repair or lengthen wires
- Brazed seam protects terminal barrel from splitting during the crimp process
- Internal wire stop assures proper length of insertion into terminal barrel
- UL Flammability UL 94V-0, maximum insulation temperature 221°F (105°C)
- UL and CSA rated up to 600 V per UL 486



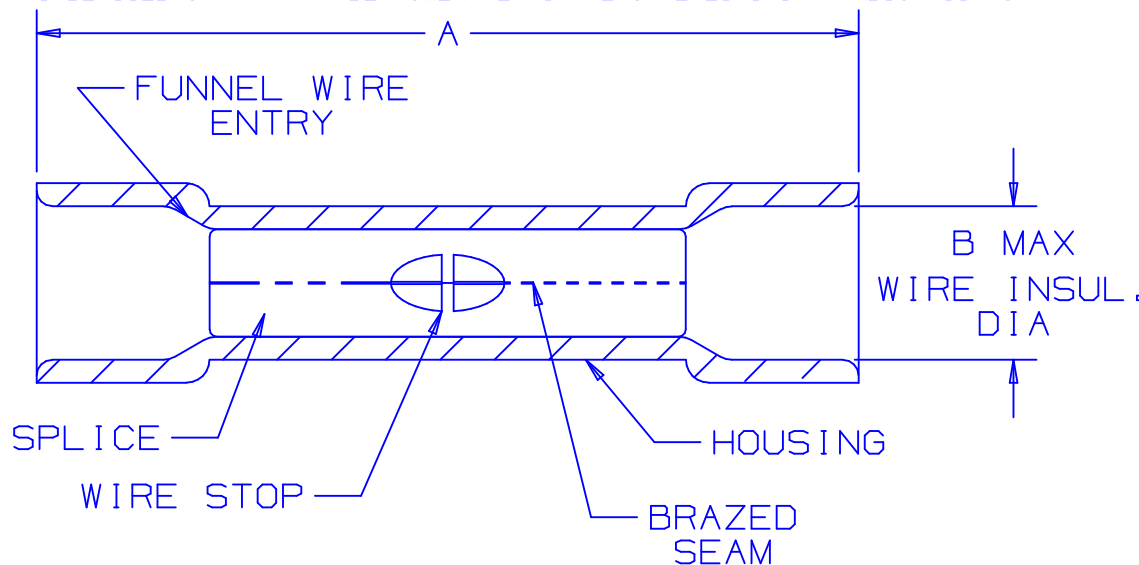
Part Number:	BSV18X-CY
RoHS Compliance Status:	Compliant
Note:	BSV18X-CY replaces BSV18X-C
Part Description:	Butt Splice, 22 – 18 AWG, vinyl insulated.
Product Type:	Splices
CSA Certified:	Yes
UL Listed:	Yes
Length (In.):	1.03
Angle:	straight
Max. Ins.:	.170
Panduit Color Code:	Red
Tool:	CT-100A, CT-600-A, CT-1550, CT-1551, CT-2500
Wire Range:	22 – 18 AWG
Wire Range (mm ²):	0.5 – 1.5
Min. Order UOM:	PC
Min. Order Qty.:	100
BOM Qty. (# of Pkgs.)	

[Add to My Catalog](#)

 Please [register](#) to utilize the 'Bill of Materials', 'Submit Quotes' and 'My Catalog' features.

THIS COPY IS PROVIDED ON A RESTRICTED BASIS AND IS NOT TO BE USED IN ANY WAY DETRIMENTAL TO THE INTERESTS OF PANDUIT CORP.

PANDUIT PART NUMBER		WIRE RANGE	COLOR CODE	DIMENSIONS in.	
PREFIX	PK.			A ±.03	B
BSV18X	-C	22-18 *	RED	1.03	.170
	-M			(26,16)	(4,32)
	-MY				
BSV14X	-C	16-14 **	BLUE	1.04	.200
	-M			(26,42)	(5,08)
BSV10X	-L	12-10 ***	YELLOW	1.18	.250
	-D			(29,97)	(6,35)



NOTES :

- UL LISTED AND CSA CERTIFIED FOR :
 - 600 V MAX. VOLTAGE RATING
 - 221°F (105°C) MAX. TEMP. RATING
 - SOLID OR STRANDED, COPPER WIRE
- MATERIAL :
 - STAMPING (22-18 & 16-14) - .03" THK COPPER, TIN PLATED
 - STAMPING (12-10) - .04" THK COPPER, TIN PLATED
 - HOUSING - VINYL
- DIMENSIONS IN BRACKETS ARE IN MILLIMETERS
- INSTALLATION TOOLS : CT-100, CT-500, CT-550, CT-1550, CT-1551 (CT-500 NOT USED WITH BSV10X, 300V WITH BSV10X & CT-100)
- * 22-16 AWG WIRE RANGE WITH CT-500, CT-550, CT-1550, CT-1551 TOOLS
 - ** 18-14 AWG WIRE RANGE WITH CT-500, CT-550, CT-1550, CT-1551 TOOLS
 - *** 12-10 AWG STRANDED AND 12 AWG SOLID COPPER WIRE WITH CT-1550 AND CT-1551 TOOL
- WIRE STRIP LENGTH: 5/16 +1/32₀ (7,9 +.8₀)
- PACKAGE QTY: STD. PKG. -L=50 BULK PKG. -D=500
-C=100 -M=1000 -MY=1000



LISTED
587H
E52164

CERTIFIED
LR31212

07	5/05	JHNU		ADDED PACKAGING CODE "MY" TO DRAWING.			
06	10/00	EJS	SKB	DIMENSION B IN PART BSV18X WAS .183, BSV14X WAS .211, BSV10X WAS .260	08760	JAC	CCH
05	11/98	WJBS	SKB	UPDATED WIRE STOPS, NOTES, & DIMS.	07265	JCJ	TRO
4	3/95	MS	RLS	UPDATED NOTES AND DIMENSIONS	03080	LA	KS
3	3/88	FS		REDRAWN ON CAD		LA	JB
REV	DATE	BY	CHK	DESCRIPTION	ECN #	CUST	PM

A41181_07

PANDUIT CORP.

TINLEY PARK, ILLINOIS

EXPANDED VINYL INSULATED BUTT SPLICES

DRAWN BY FES	CHK'D	SCALE NONE	DRAWING NO. A41181
-----------------	-------	---------------	-----------------------