

Current refinements (click  to remove)

[Search Tips](#) 
 [Region](#)  [USA](#)
 [Product Family](#)  [Butt Splice, Nylon Insulated](#)
 [Text Search: 'BSN22-M'](#)
**Your search criteria matched only one product, shown below.**

- Designed to splice two solid or stranded wires together to repair or lengthen wires
- Butted configuration provides low profile for limited space applications
- Brazed seam protects terminal barrel from splitting during the crimp process
- Internal wire stop assures proper length of insertion into terminal barrel
- UL Flammability UL 94V-2/HB, maximum insulation temperature 221°F (105°C)
- UL and CSA rated up to 600 V per UL 486



Part Number:	BSN22-M
RoHS Compliance Status:	Compliant
Part Description:	Butt Splice 26 – 22 AWG, nylon insulated.
Product Type:	Splices
Length (In.):	.79
Angle:	straight
Max. Ins.:	.080
Panduit Color Code:	Yellow
Tool:	CT-100A, CT-1525, CT-2500
Wire Range:	26 – 22 AWG
Wire Range (mm <sup>2</sup> ):	0.14 – 0.5
Min. Order UOM:	PC
Min. Order Qty.:	1000
BOM Qty. (# of Pkgs.)	
<a href="#">Add to My Catalog</a>	

 Please [register](#) to utilize the 'Bill of Materials', 'Submit Quotes' and 'My Catalog' features.

[View Content Details](#)

Evaluate

Design a Solution

Install &amp; Maintain

Part Drawings:

 [Butt Splices, Nylon Insulated - Type B...](#)

Design a Solution

Part Drawings:

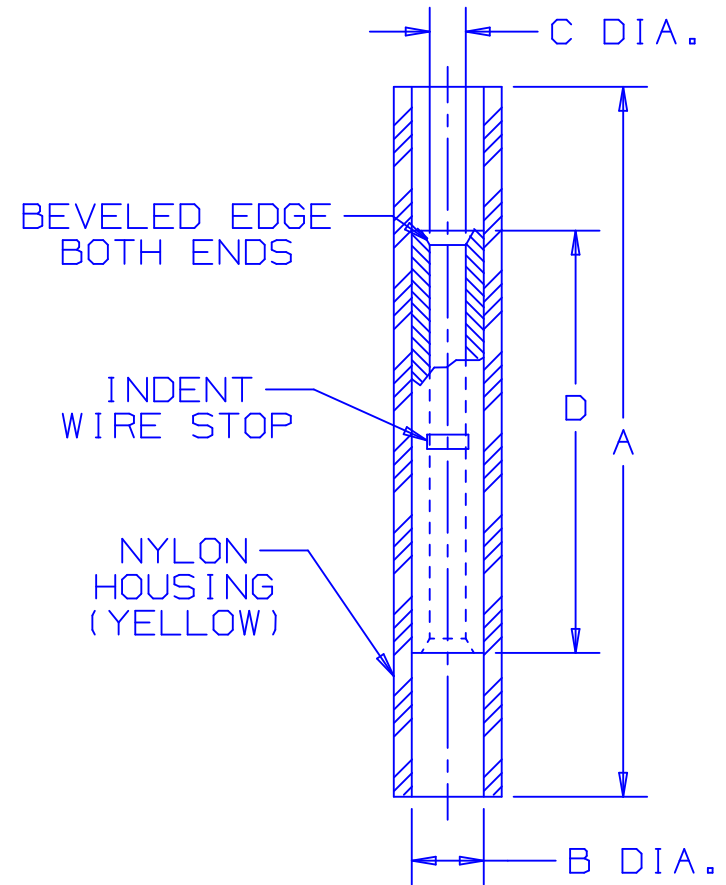
 [Butt Splices, Nylon Insulated - Type BSN22 pdf](#)

PANDUIT PART NUMBER	WIRE SIZE	DIMENSIONS in.			
		A ±.03	B DIA. ±.01	C DIA. ±.01	D ±.03
BSN22	26-22	.79 (20.1)	.08 (2.0)	.04 (1.0)	.47 (1.2)



NOTES:

- RATED FOR:
  - #26-22 AWG SOLID OR STRANDED COPPER WIRE
  - 221° F (105° C) MAX. TEMP. RATING
- MATERIAL:
  - .02 (0.5) THK COPPER, TIN PLATED
  - HOUSING - NYLON, YELLOW
- PACKAGE QTY: STD. PKG.-C=100  
BULK PKG.-M=1000
- DIMENSIONS IN BRACKETS ARE IN MILLIMETERS
- INSTALLATION TOOLS: CT-520
- WIRE STRIP LENGTH:  $1/4^{+1/32}_0$



A41337\_04

REV	DATE	BY	CHK	DESCRIPTION	ECN #
04	10/05	RT	LA	REMOVED UL & CSA NOTE	TR00036
03	1/01	RM		FILESPEC WAS N41337AA_PCD_02	
02	7/95	MC		UPDATED NOTES AND DIMENSIONS	03438

**PANDUIT** CORP.

TINLEY PARK, ILLINOIS

#26-22 BARREL NYLON INSULATED BUTT SPLICE

DRAWN BY  
DAW

CHK'D

SCALE  
N/A

DRAWING NO.  
A41337