

ACC62-A-C

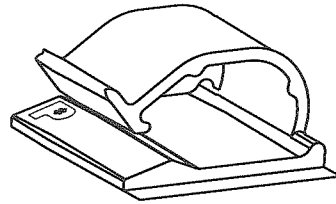
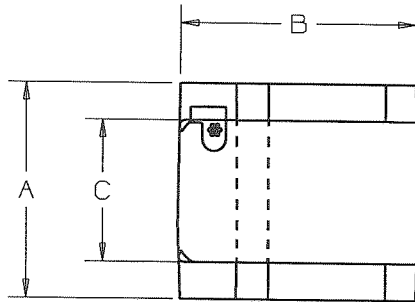


- Three sizes of clips to hold cords, cable or wire bundles up to .62" (15.7m) diameter. Bundles are easily snapped into or out of the clips.
- Use Indoors
- Color: Natural
- Material: Nylon

• Part Number	ACC62-A-C
• RoHS Compliancy Status	Compliant
• Part Description	Adhesive Backed Cord Clip
• Product Type	Mounting Clips
• Material	Nylon 6.6
• Color	Natural
• UL Recognized	E136577
• Height (In.)	.63
• Height (mm)	16.0
• Length (In.)	1.24
• Length (mm)	31.4
• Width (In.)	1.12
• Width (mm)	28.5
• Adhesive Type	Rubber
• Environment	Indoors
• Max. Bundle Diameter (In.)	.62
• Max. Bundle Diameter (mm)	15.7
• Min. Bundle Diameter (In.)	.62
• Min. Bundle Diameter (mm)	15.7
• Mounting Method	Adhesive Backed
• Pricing Description	Cord Clip, Adh., .62" (15.8mm) Bundle, NAT
• Min. Order UOM	PC
• Min. Order Qty.	100
• BOM Qty. (# of Pkgs.)	
• Add to Favorite Product List	

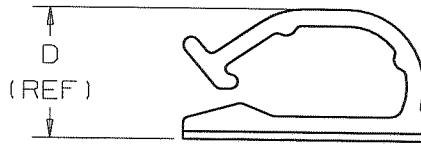
THIS COPY IS PROVIDED ON A RESTRICTED BASIS AND IS NOT TO BE USED IN ANY WAY DETRIMENTAL TO THE INTERESTS OF PANDUIT CORPORATION.

PANDUIT PART NUMBER	DIMENSIONS				MAXIMUM CABLE DIA. in. (mm)	ADHESIVE BACKING	WEIGHT lbs/100 pcs (g)/100 pcs
	A	B	C	D			
ACC62-A	1.12	1.24	.73	0.65	0.62 (15.7)	RUBBER ACRYLIC	0.96 (437)
ACC62-AT	(28.5)	(31.4)	(18.5)	(16.5) (REF)			



NOTES:

- SEE CURRENT PRICE SHEET FOR PART NUMBER SUFFIX DESIGNATION FOR PACKAGE SIZE.



CAD FILENAME/LAYERS
G03597BD_DC_GB0239BB/00B

PANDUIT CORP.

TINLEY PARK, ILLINOIS

ACC62-__
ADHESIVE CORD CLIP

REV	DATE	BY	CHK	DESCRIPTION	ECN	R	CUST	SUP
00B	7/9/08	DJSM		REVISED AND RE-RELEASED TO TEAMCENTER REV HISTORY; TABULARIZED DIMS; REMOVED .86 AND .49 DIMS; REVISED .63 DIM TO INCLUDE TAPE; .73 WAS .74; REMOVED TAPE, APPLICATION, AND WARRANTY NOTES	GB0239BB	00B	KLN	
3	7/18/00	JAD		DIMENSIONS, .63, .86, & .49 WERE CHANGED TO REF DIMENSIONS	GB0239BB	3		

UNLESS OTHERWISE SPECIFIED, DIMENSIONAL TOLERANCES ARE:
(.X) ±0.05 (1.3) (.XXX) ±0.010 (0.25)
(.XX) ±0.02 (.5) ANGLES ±5°

UNLESS OTHERWISE SPECIFIED, ALL DIMENSIONS ARE GIVEN IN INCHES, THIRD ANGLE PROJECTION

DRAWN BY
JRL

MAT'L:

SCALE
FULL

DATE
9-11-92

NYLON 6/6
COLOR: NATURAL

DRAWING NO.
GB0239BB

CHK'D
KLN

DWG
SIZE
A