



[Custom  
Molded  
Rubber](#)



[Custom  
Colors!!](#)

[Home](#)

[About PacTec](#)

[Contact Us](#)

## Login

[Click Here to Register](#)

Username

Password

[Forget your login info?](#)

[View Cart \(0\)](#)  
[Advanced Search](#)  
[Connector Search](#)

## News

Sign up for our latest news and new product updates!

**Email:**

## LH64-200

**External Dimensions: 4.2 x 6.1 x 2.2 in.**

**PCB Dimensions: 3.7 x 5.6 x 2.2 in.**

**Colors:** Black  
PC Bone

**Materials:** ABS-94HB  
[Material Specs](#)

### Components:

- Top and Bottom Covers
- Assembly Screws
- 2 Panels
- 4 Feet



[Custom Colors!!](#)



[Free Samples of  
New Products Available!](#)



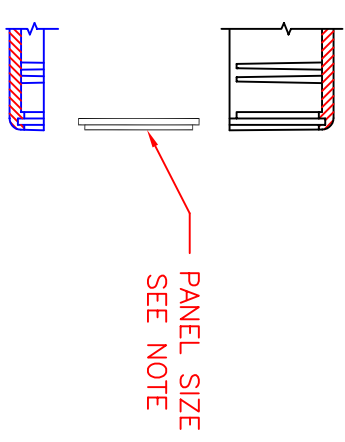
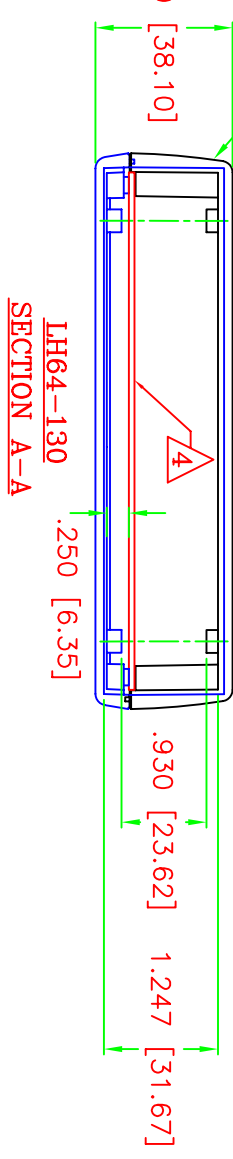
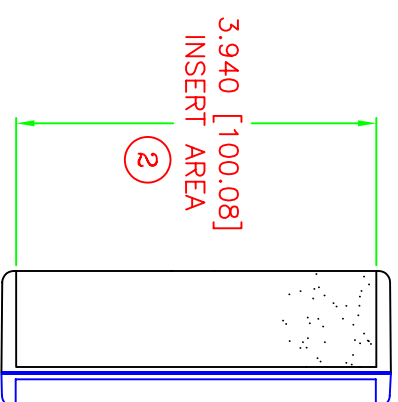
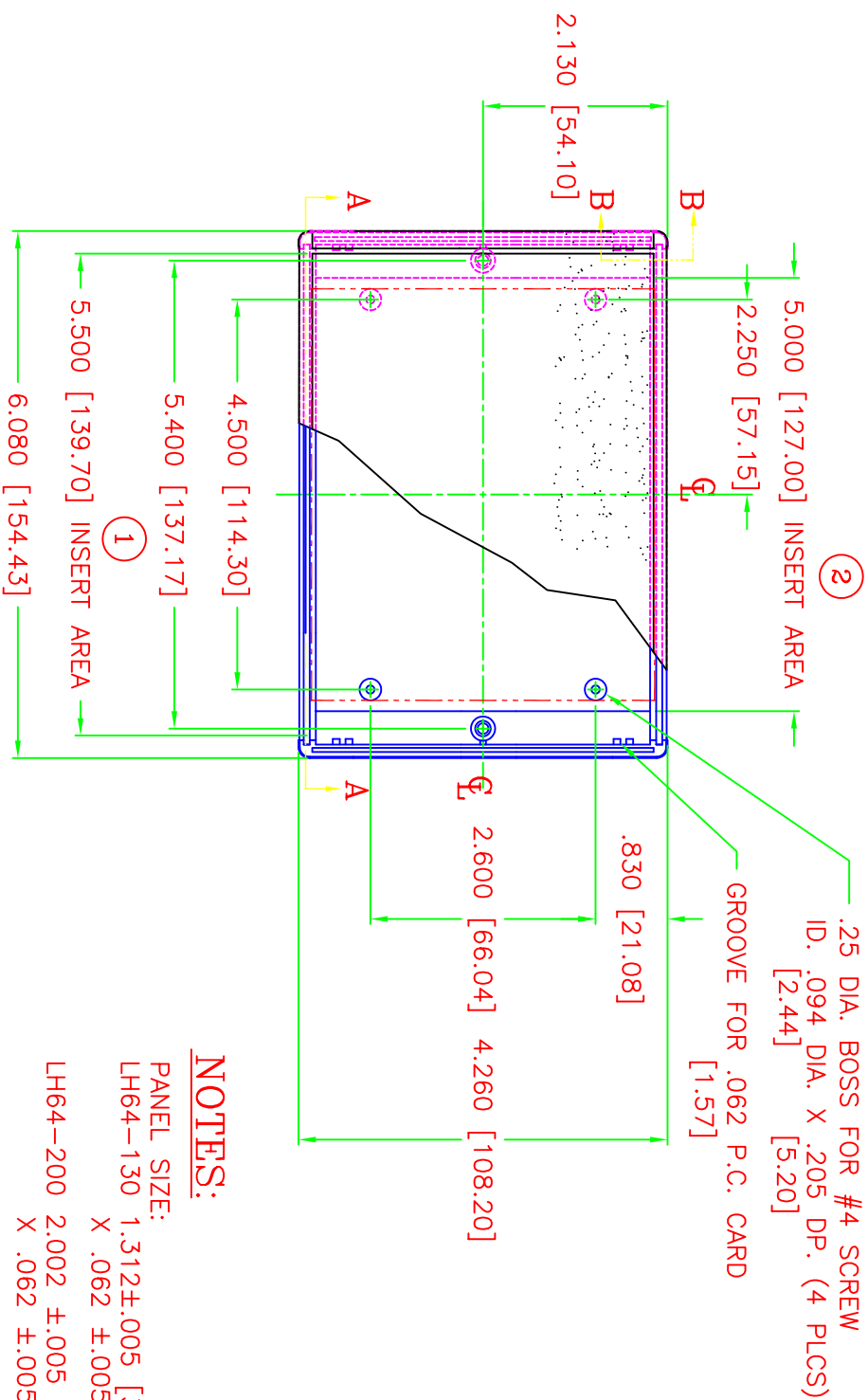
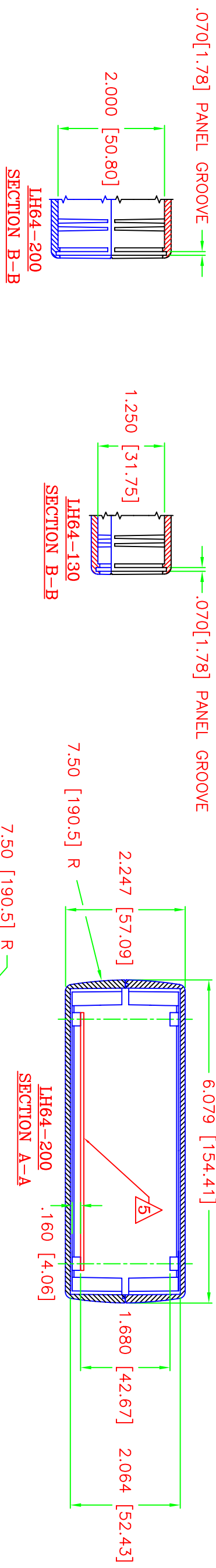
Copyright 2002-2005 © PacTec Divison of LaFrance Corp. All Rights Reserved.

[Privacy  
Policy](#)

| [Shipping  
Policies](#)

| [Return  
Policies](#)

| [Site  
Map](#)



**NOTES:**

PANEL SIZE:

LH64-130 1.312±.005 [33.32 ±0.13] H X 4.750 ±.005 [120.65 ±0.13 ] W  
 X .062 ±.005 [1.57 ±0.13] THK., IN PANEL GROOVE AREA.

LH64-200 2.002 ±.005 [52.37 ±0.13] H X 4.750 ±.005 [120.65 ±0.13 ] W  
 X .062 ±.005 [1.57 ±0.13] THK., IN PANEL GROOVE AREA.

- (1) EXTERIOR INSERT AREA, FOR IN MOLD MODIFICATION.
- (2) INTERIOR INSERT AREA, FOR IN MOLD MODIFICATION.  
TYPICAL ON TOP AND BOTTOM COVERS.
- (3) USABLE PANEL AREA.

▲ P.C. CARD

5.700 [144.78] W X 3.950 [100.33] L .062±.005 [1.57±0.13] THK.  
 5.000 [127.00] W X 3.950 [100.33] L .062±.005 [1.57±0.13] THK.

**PACTEC**

LH64-130/LH64-200

www.pactecenclosures.com

1-610-361-4200

71911 REV E 07/05 SIDE 2