

D

C

B

A



### TECHNICALS FEATURES

#### MATERIALS

INSULATOR : Special PPS (Polyphenylene sulphide fibreglass filled thermoplastic) UL 94-V0

- Radiation resistance
- No humidity absorption
- Oxygen free

Note : PPS characteristics are recognized for space applications

#### FIXING HARDWARE :

- Jackscrew : Stainless steel

### TECHNICAL FEATURES for 30 HP CONTACTS

#### MATERIAL

- Body : Copper alloy / Ni + Au 0.5µ
- Retaining clip : Beryllium alloy / Ni 3µ

#### MECHANICAL

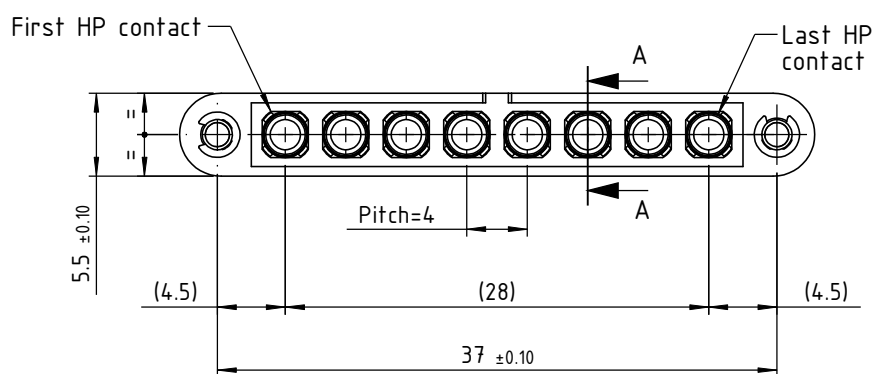
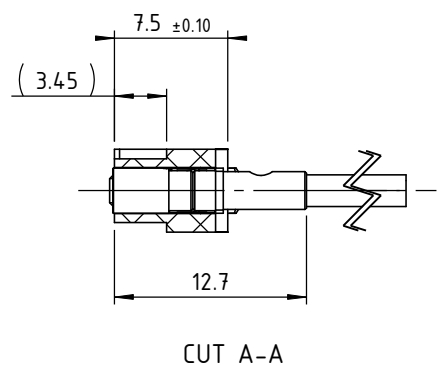
- Endurance : 2500 cycles
- Insertion force : From 0.60 to 5N per contact
- Extraction force : From 0.50 to 2N per contact
- Secure overlapping : 1.30 mm
- Contact replacement in insulator : 30 cycles

#### ELECTRICAL

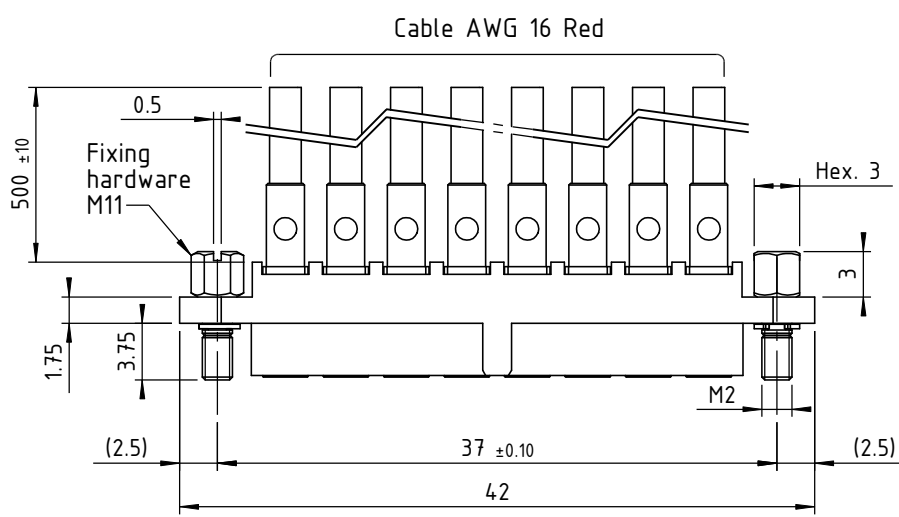
- Intensity : 10 A
- Contact resistance : max. 6 mΩ
- Maximum voltage (sea level) : 1000V (RMS)
- Operating voltage (sea level) : 180 V AC/500 mA

#### ENVIRONMENTAL

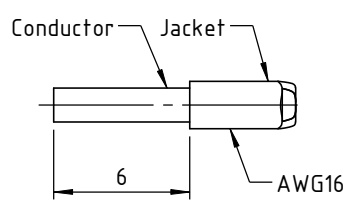
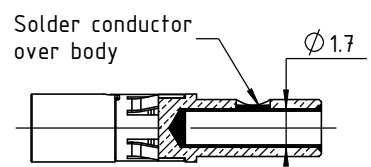
- Temperature range : From -60°C to +260°C
- Vibration severity : 0.75mm, 10 g RMS 6 hours long random with superimposed sinusoid. No intermittencies measured when using an H.S.L.I. (High Speed Logic Interrupt) detector with a trip threshold of 2 ns
- Salt spray test : 96 hrs
- Humidity test : 56 days @ 90% humidity



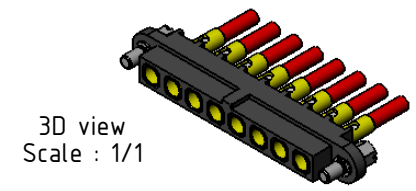
**WIRES SPECIFICATION**  
 MIL-W-22759/11  
 AWG16 Red  
 Standing : 19x29  
 Finished Diameter: 1.95 mm max. (0.076 inch)  
 Conductor : Silver coated copper  
 Insulation : Extruded PTFE  
 Temperature Rating : 200°C  
 Voltage Rating : 600 V



HP contact  
 30-4310 AWG16  
 scale : 3 : 1



Tooling recommended	
Désignation	Part number
HP series contacts removal	12368



Soldering referee page 92 of CMM catalogue  
 Marking referee page 12-13 of CMM catalogue

	2	11/09/08	C.G.	E.M.	D.Z.
	Iss	Date	Drawn	Checked	Approved
www.nicomatic.com Mail : nicomatic@nicomatic.fr Tel : +33 (0)4.50.36.13.85		Item : Female harness 222E00M11-0008-4310 Lg 500mm Connector CMM220 F, 8 HP contacts 30-4310, M11			
Folder : X:\Méthodes\Plans clients\Plans clients 2D\17 - Cablage\2 - Câblage avec contacts spéciaux\HB30003J2A500_cl					

This document and drawings, sketches, and schematic drawings are the property of the NICOMATIC company, and no parts thereof may be reproduced and used without the written consent of the owner. Law dated 11.03.1902

Catalogue Reference : **HB30003J2A500**

	General tolerance	±0.2	Scale	2:1	Page	1/1
--	-------------------	------	-------	-----	------	-----

D

A4