

D

C

B

A

4

4

3

3

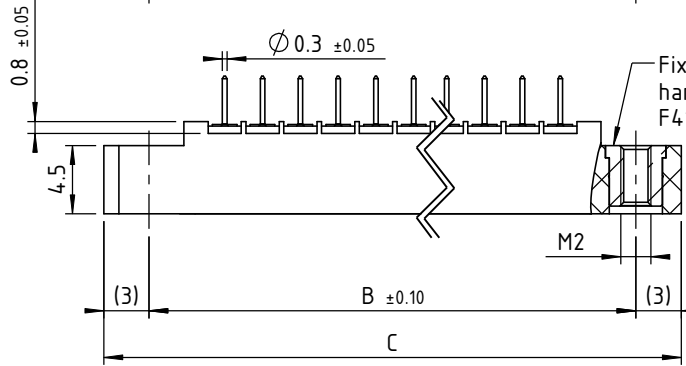
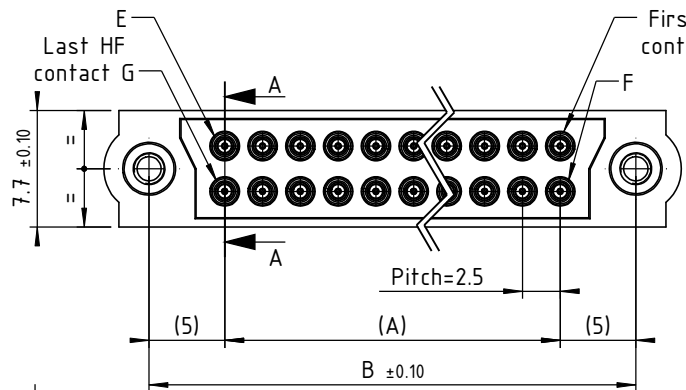
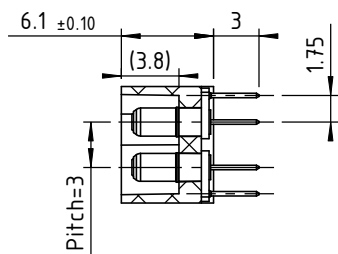
2

2

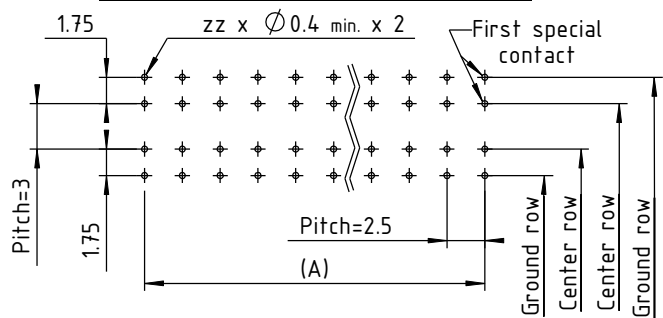
1

1

CUT A-A



Recommended PCB layout :



TECHNICALS FEATURES

MATERIALS

INSULATOR : Special Special PPS (Polyphenylene Sulfide Fibreglass filled thermoplastic) UL 94-V0

- Radiation resistance
- No humidity absorption
- Oxygen free

Note : PPS characteristics are recognized for space application

FIXING HARDWARE :

- Jackscrew : Stainless steel

TECHNICAL FEATURES for 22 HF CONTACTS

MATERIAL

- Body : Copper alloy / Ni + Au 0.5μ
  - Inner contact : Copper alloy / Ni + Au 0.75μ
  - Insulator : PTFE
- Do not complies with radiation

MECHANICAL

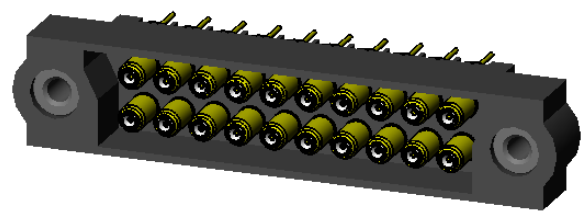
- Mechanical operations : 2 500 cycles min.
- Insertion force : From 0.60 to 5N per contact
- Withdrawal force : From 0.50 to 2N per contact
- Secure overlapping : 1.30 mm

ELECTRICAL

- Impedance : 50Ω
- Insulator resistance : 10<sup>9</sup> mΩ / 250V (RMS)
- SWR (Stationary Wave Rate) < 1.05 + 0.04 F (GHz)
- Frequency range : 1.5 GHz
- Insulation between 2 contacts : -100dB

ENVIRONMENTAL

- Temperature range : From -60°C to +260°C
- Vibration severity : 0.75mm, 10 g RMS 6 hours long random with superimposed sinusoid. No intermitencies measured when using an H.S.L.I. (High Speed Logic Interrupt) detector with a trip threshold of 2 ns
- Salt spray test : 96 hrs
- Humidity test : 56 days @ 90% humidity



Marking referee page 12-13 of CMM catalogue

 <a href="http://www.nicomatic.com">www.nicomatic.com</a> Mail : <a href="mailto:nicomatic@nicomatic.fr">nicomatic@nicomatic.fr</a> Tel : +33 (0)4.50.36.13.85	2	12/09/08	H.L.	E.M.	D.Z.
	Iss	Date	Drawn	Checked	Approved
Item : Connector CMM340 M straight on PCB, zz HF contacts 22-1300-12, F41					
Folder : X:\Méthodes\Plans clients\Plans clients 2D\25 - CMM340\Connecteurs Mâtes\341D\341D000F41-00zz-130012_cl					

This document and drawings, sketches, and schematic drawings are the property of the NICOMATIC company. and no parts thereof may be reproduced and used without the written consent of the owner. Law dated 11.03.1902

Catalogue Reference : 341D000F41-00zz-130012

	General tolerance ±0.2	Scale 2:1	Page 1/1
--	------------------------	-----------	----------

D

A4