

D

C

B

A

4

3

2

1

4

3

2

1



TECHNICALS FEATURES

MATERIAL

INSULATOR : Special PPS (Polyphenylene Sulfide Fibreglass filled thermoplastic) UL 94-V0

- Radiation resistance
No humidity absorption
Oxygen free

Note : PPS characteristics are recognized for space applications

SIGNAL CONTACTS for PCB:

- Male: Tail (Copper alloy / Ni + Au flash 0.1µ), Contact area (Copper alloy / Ni + Au 1µ)

FIXING HARDWARE :

- Jackscrew : Stainless steel

ELECTRICAL for LF Contacts

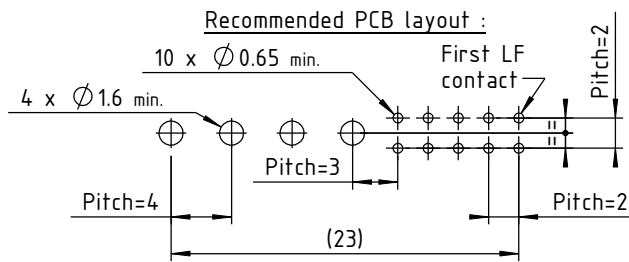
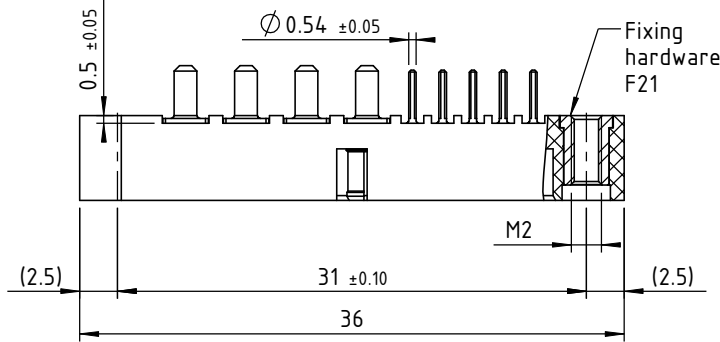
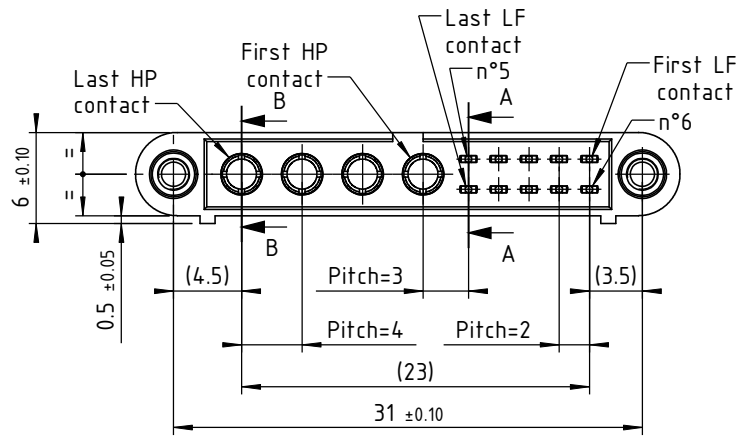
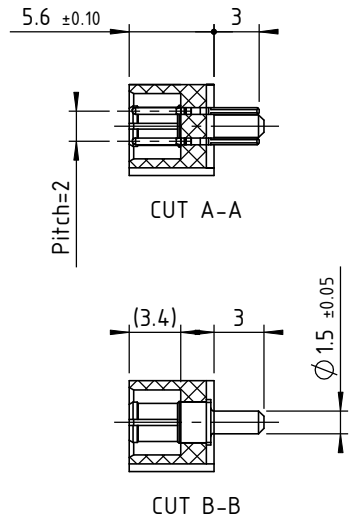
- All contacts (3 A max. @ 25°C, 2.2 A max. @ 85°C), Working voltage (sea level) (Tested at 800 V DC), Proof voltage (Tested at 1200 V DC), Contact resistance (initially) (max. 10 mΩ), Insulation resistance (1000 MΩ min)

MECHANICAL for LF Contacts

- Mechanical operations (2500 cycles min.), Contact insertion and withdrawal force (2 N max. / 0.2 N min. per contact)

ENVIRONMENTAL

- Temperature range (From -60°C to +260°C), Vibration severity (0.75mm, 10 g RMS 6 hours long random with superimposed sinusoid...), Shock severity (100g for 6 ms), Solvent resistance (HcFc 141 bMGX (ATOCHEM) solvent), Salt spray test (96 hrs), Humidity test (56 days @ 90% humidity)



TECHNICAL FEATURES for 30 HP CONTACTS

MATERIAL

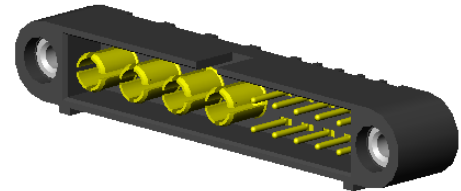
- Body (Copper alloy / Ni + Au 0.5µ)

MECHANICAL

- Endurance (2500 cycles), Insertion force (From 0.60 to 5N per contact), Extraction force (From 0.50 to 2N per contact), Secure overlapping (1.30 mm)

ELECTRICAL

- Intensity (20 A), Contact resistance (max. 6 mΩ), Maximum voltage (sea level) (1000V (RMS)), Operating voltage (sea level) (180 V AC/500 mA)



Marking referee page 12-13 of CMM catalogue

Table with 5 columns: Iss, Date, Drawn, Checked, Approved. Includes Nicomatic logo and contact information.

This document and drawings, sketches, and schematic drawings are the property of the NICOMATIC company...

Catalogue Reference : 221Y10F21-0004-3300CMM

Table with 3 columns: General tolerance (±0.2), Scale (2:1), Page (1/1)