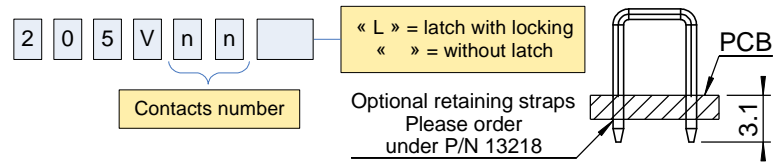
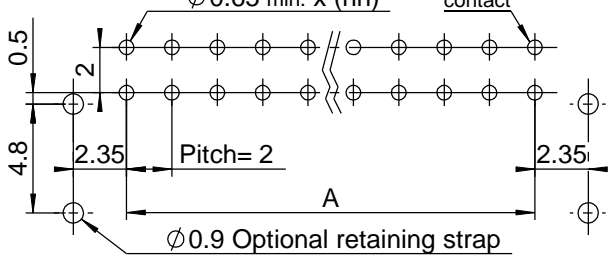
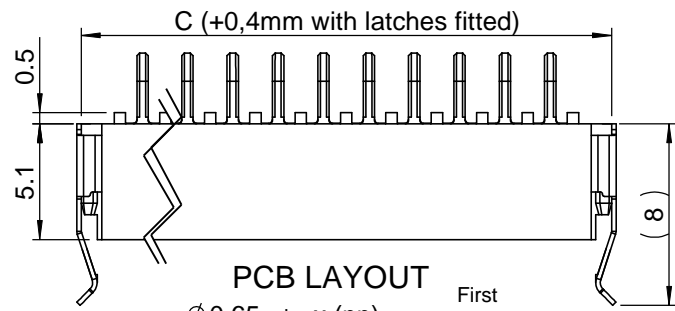
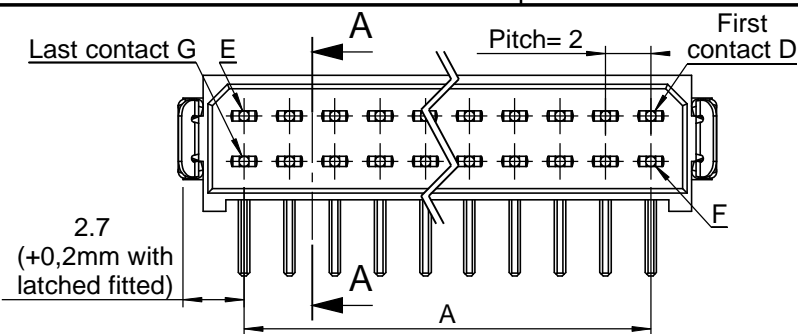
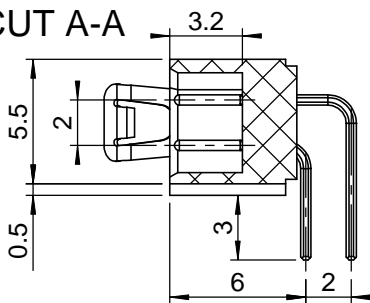


**CUT A-A**



**TECHNICAL FEATURES**

**MATERIALS**

**INSULATOR :** Glass filled thermoplastic UL 94-V0

**SIGNAL CONTACTS for PCB:**

**Male :** Brass / 0.75µ gold on contact area  
3µ to 5µ 100% tin on tails over Ni under plate

**FIXING HARDWARE :**

- Latch : Beryllium copper / 2µ nickel plated

**ELECTRICAL**

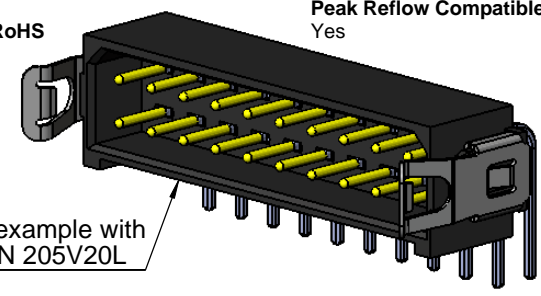
- All contacts: 3 A max. @ 25°C, 2.2 A max. @ 85°C, 300V AC/DC
- Working / Rated voltage (sea level): 400V AC/DC
- Proof / Withstanding voltage: max. 20 mΩ
- Contact resistance (initial): max. 25 mΩ
- Contact resistance (after conditioning): 1000 MΩ min
- Insulation resistance (initial): 500 cycles.

**MECHANICAL**

- Mechanical operations: 500 cycles.
- Contact insertion and withdrawal force: 2N max. / 0.2 N min.
- Contact retention in insulator: 10N min.

**ENVIRONMENTAL**

- Temperature range: From -55°C to +125°C, Peak Reflow Compatible 260°C
- RoHS: Yes



3D example with P/N 205V20L

**CONNECTOR PRO SERIES 205 MALE**

Contacts number nn	Length without Latches in mm		Contacts reference mark number			
	A	C	D	E	F	G
04	2	7.4	1	2	3	4
06	4	9.4	1	3	4	6
08	6	11.4	1	4	5	8
10	8	13.4	1	5	6	10
12	10	15.4	1	6	7	12
14	12	17.4	1	7	8	14
16	14	19.4	1	8	9	16
18	16	21.4	1	9	10	18
20	18	23.4	1	10	11	20
22	20	25.4	1	11	12	22
24	22	27.4	1	12	13	24
26	24	29.4	1	13	14	26
28	26	31.4	1	14	15	28
30	28	33.4	1	15	16	30
32	30	35.4	1	16	17	32
34	32	37.4	1	17	18	34
36	34	39.4	1	18	19	36
38	36	41.4	1	19	20	38
40	38	43.4	1	20	21	40
42	40	45.4	1	21	22	42
44	42	47.4	1	22	23	44
46	44	49.4	1	23	24	46
48	46	51.4	1	24	25	48
50	48	53.4	1	25	26	50

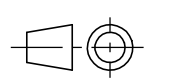
Latch separation tool	P/N C14790
Strain relief straps	P/N 13218

Ce plan est la propriété exclusive de la société NICOMATIC. Il ne peut être reproduit sans son autorisation. Loi du 11.03.1902.

This document and drawings, sketches, and schematic drawings are the property of the NICOMATIC company, and no parts thereof may be reproduced and used without the written consent of the owner. Law dated 11.03.1902



173, rue des fougères  
Z.I. Les Bracots  
F-74890 Bons-en-Chablais  
Tel. : +33 (0)4.50.36.13.85  
Fax : +33 (0)4.50.36.11.33  
Web : www.nicomatic.com



Echelle/Scale  
**3:1**

205Vnn(L)\_cl  
**Réf. catalogue / Catalogue Reference 205Vnn(L)**

a	16/05/08	H.T.		D.Z.
Ind	Date	Drawn	Checked	Approved

**Désignation : Connector CMM200 Pro series Male 90° on PCB**

Tolérance générale / General tolerance	±0.2	Page 1/1	A4
--	------	----------	----