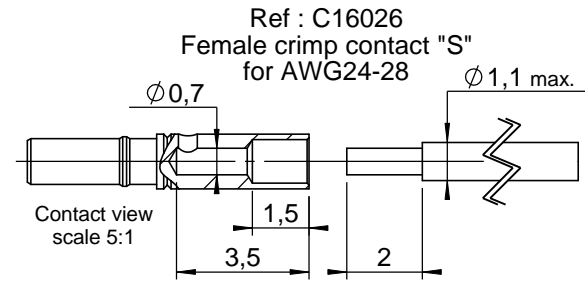
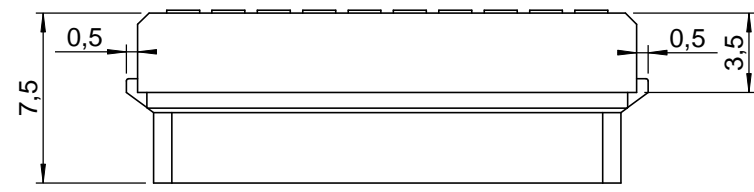
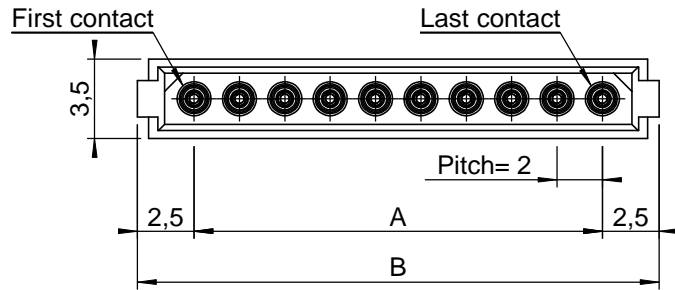


CONNECTOR SERIE 106 FEMALE

LF contacts number nn	Length in mm	
	A	B
02	2	7
03	4	9
04	6	11
05	8	13
06	10	15
07	12	17
08	14	19
09	16	21
10	18	23
11	20	25
12	22	27
13	24	29
14	26	31
15	28	33
16	30	35
17	32	37
18	34	39
19	36	41
20	38	43
21	40	45
22	42	47
23	44	49
24	46	51
25	48	53



1 0 6 S n n
Contacts number

TECHNICALS FEATURES

MATERIAL

INSULATOR : Glass filled thermoplastic UL 94-V0

CRIMPING SIGNAL CONTACTS :

Female : Beryllium copper / gold on clip
Brass / tin plated

ELECTRICAL

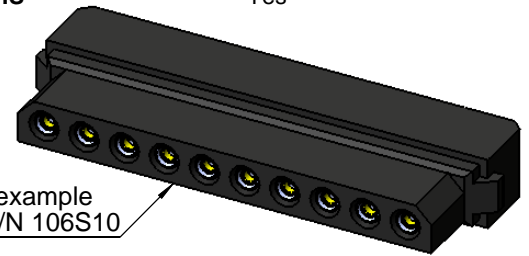
- All contacts: 3 A max. @ 25°C
2.2 A max. @ 85°C
- Working / Rated voltage (sea level): 300V AC/DC
- Proof / Withstanding voltage: 400V AC/DC
- Contact resistance (initial): max. 20 mΩ
- Contact resistance (after conditioning): max. 25 mΩ
- Insulation resistance (initial): 1000 MΩ min

MECHANICAL

- Mechanical operations: 500 cycles.
- Contact insertion and withdrawal force: 2N max. / 0.2 N min.

ENVIRONMENTAL

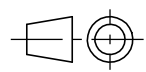
- Temperature range: From -55°C to +125°C
Peak Reflow Compatible 260°C
- ROHS: Yes



LF contacts insertion & withdrawal tool	P/N C12935
Recommended hand crimp tool	P/N MH800
Recommended positioner	P/N K1692
AWG24 crimp tool setting	Position 7
AWG26 & AWG28 crimp tool setting	Position 6



173, rue des fougères Tel. : +33 (0)4.50.36.13.85
Z.I. Les Bracots Fax : +33 (0)4.50.36.11.33
F-74890 Bons-en-Chablais Web : www.nicomatic.com



Echelle/Scale
3:1

a	06/05/08	H.T.	D.Z.	O.N.
Ind	Date	Drawn	Checked	Approved

Désignation : Connector CMM Female crimp AWG 24-28

Repertoire / Folder : X:\Méthodes\CMM Industriel\106\106Snn_cl

Réf. catalogue / Catalogue Reference 106Snn

Tolérance générale / General tolerance	±0.2	Page	1/1	A4
--	------	------	-----	----

Ce plan est la propriété exclusive de la société NICOMATIC. Il ne peut être reproduit sans son autorisation. Loi du 11.03.1902.

This document and drawings, sketches, and schematic drawings are the property of the NICOMATIC company. and no parts thereof may be reproduced and used without the written consent of the owner. Law dated 11.03.1902