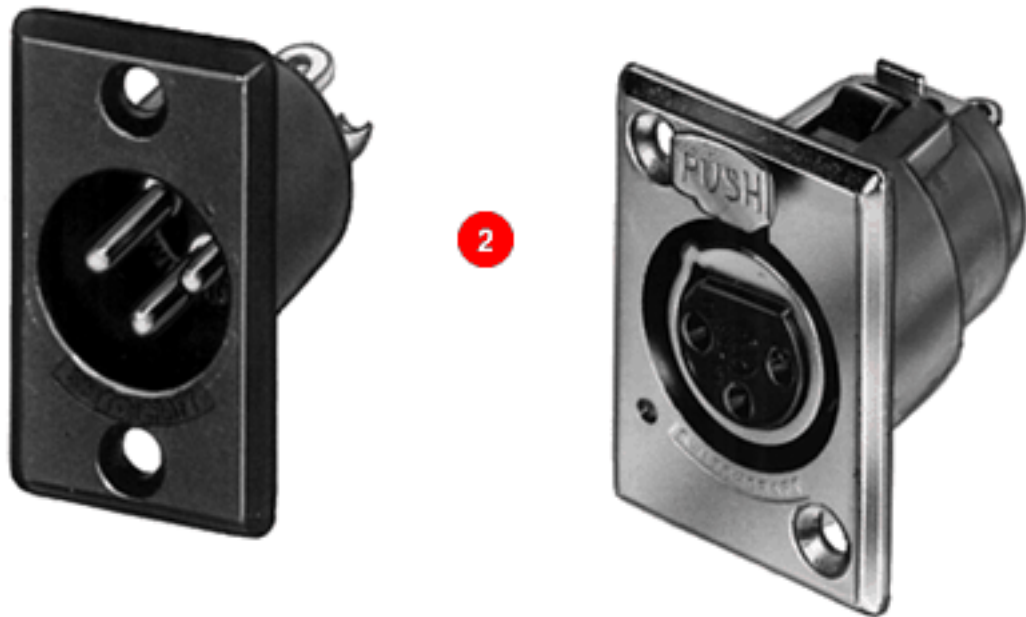


Switchcraft®

[Previous Page](#) | [Return to Index](#) | [Next Page](#)



Q-G® CORD PLUG CONNECTORS AND RECEPTACLES

1. T(*)F and T(*)FM Cord Plug With On-Off Switch

2. D(*)M, D(*)F and D(*)FD Receptacles

[click here to download a schematic drawing](#)

(you will need to have Adobe Acrobat installed on your system to do this)



T(*)F and T(*)FM Cord Plug With On-Off Switch

T(*)F Straight female cord plug with DPDT (2-C) locking on-off switch; standard latchlock.

T(*)FM Straight female cord plug with SPDT (1-C) momentary on-off switch; standard latchlock.

Slide switches rated 500 mA, 125V (AC or DC). Mounting screws are supplied.

Part Number *	Part Number	Insert Contacts
T3F	☐T3FL	3
☐T3FM	☐T3FLM	3
☐T4F	☐T4FL	4
☐T4FM	☐T4FLM	4
☐T5F	☐T5FL	5
☐T5FM	☐T5FLM	5
☐T6F	☐T6FL	6
☐T6FM	☐T6FLM	6
☐T7F	-	7
☐T7FM	-	7

* Number of insert contact or pins must be specified to complete Part Number.

☐ Available on special order only; contact Switchcraft for price and delivery.

D(*)M, D(*)F and D(*)FD Receptacles

Studio quality black and gold Q-G[®] receptacle with black housing and gold contacts is

designed for low/stable contact resistance and withstands corrosion where highest quality is required for recording and broadcast studio equipment, consoles, and other applications.

D(*)M SERIES - Male receptacle for panel or chassis mounting. Special rectangular flange permits close spacing on crowded panels, has two .136 inch (3.45mm) diameter countersunk holes for #5-40 flat head mounting screws (not supplied). Mounts from front of panel or chassis in .766 inch (19.45) diameter hole. Satin nickel finish (Series D*M) or black finish (Series D*MB, or D*MBAU).

D(*)F SERIES - Female receptacle for panel or chassis mounting. Flange has two .136-inch (3.45 mm) diameter countersunk holes for #5-40 flat head mounting screws (not supplied). Mounts from front of panel or chassis in .953-inch (24.21 mm) diameter hole. Series D(*)F has standard latchlock; Series D(*)FD has FAS-DISCONNECT detent. Satin nickel finish (Series D*F and D*FD) and "Black-Velvet" finish (Series D*FBAU).

Nickel Finish	Black Finish		Detent	QGP Series1	Pins
	Silver	Gold			
D3M	D3MB	D3MBAU	-	QGP363	3
D4M	D4MB	D4MBAU	-	-	4
D5M	D5MB	D5MBAU	-	-	5
D6M	D6MB	D6MBAU	-	-	6
D7M	D7MB	D7MBAU	-	-	7
D3F	D3FB	D3FBAU	D3FD	QGP362	3
D4F	D4FB	D4FBAU	∅D3FDB	-	4
D5F	D5FB	D5FBAU	-	-	5
D6F	D6FB	D6FBAU	∅D6FDB	-	6
D7F	D7FB	D7FBAU	-	-	7

* Number of insert contact or pins must be specified to complete Part Number.

∅ Available on special order only; contact Switchcraft for price and delivery.

1 Non-reflective gray finish, gold-plated pins.

[Previous Page](#) | [Return to Index](#) | [Next Page](#)

To search a category please click on the corresponding icon:

Q-G® CORD PLUG CONNECTORS AND RECEPTACLES

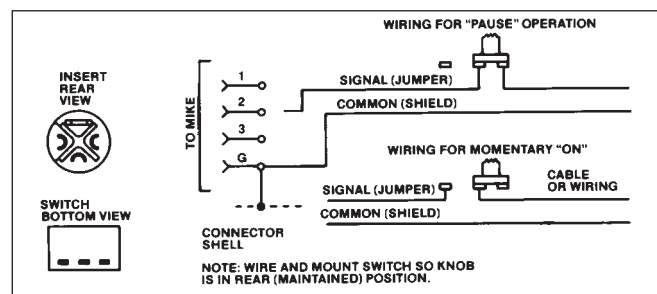
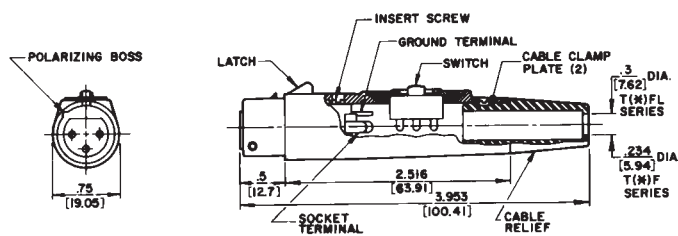
T(*)F AND T(*)FM CORD PLUG WITH ON-OFF SWITCH



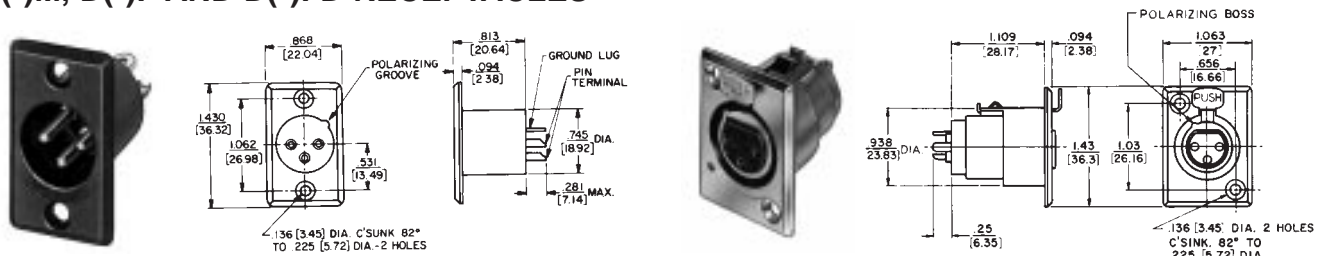
T(*)F Straight female cord plug with DPDT (2-C) locking on-off switch; standard latchlock.

T(*)FM Straight female cord plug with SPDT (1-C) momentary on-off switch; standard latchlock.

Slide switches rated 500 mA, 125V (AC or DC). Mounting screws are supplied.



D(*)M, D(*)F AND D(*)FD RECEPTACLES



Studio quality black and gold Q-G® receptacle with black housing and gold contacts is designed for low/stable contact resistance and withstands corrosion where highest quality is required for recording and broadcast studio equipment, consoles, and other applications.

D(*)M SERIES - Male receptacle for panel or chassis mounting. Special rectangular flange permits close spacing on crowded panels, has two .136 inch (3.45mm) diameter countersunk holes for #5-40 flat head mounting screws (not supplied). Mounts from front of panel or chassis in .766 inch (19.45) diameter hole. Satin nickel finish (Series D*M) or black finish (Series D*MB, or D*MBAU).

D(*)F SERIES - Female receptacle for panel or chassis mounting. Flange has two .136-inch (3.45 mm) diameter countersunk holes for #5-40 flat head mounting screws (not supplied). Mounts from front of panel or chassis in .953-inch (24.21 mm) diameter hole. Series D(*)F has standard latchlock; Series D(*)FD has FAS-DISCONNECT detent. Satin nickel finish (Series D*F and D*FD) and "Black-Velvet" finish (Series D*FBAU).

DIMENSIONS ARE FOR REFERENCE ONLY Inch
(mm)

NOTE: Contact your Switchcraft Representative for price and delivery.