

DUSTRONIX™ Pressure Differential Meter

Model DNC-PS700-A10

FEATURES

- 51 element tri-color LED meter movement
- ΔP control relay output: programmable, normally open or normally closed
- ΔP alarm relay output: programmable, normally open or normally closed
- Cleaning status LED
- Alarm status LED
- 0-10" w.c. ΔP range
- Source or sink 4 to 20 mA ΔP output
- 1/4 DIN panel mountable
- NEMA 4 compatible
- 3-digit, 7-segment alpha-numeric display
- Removable finger-safe terminations
- Replaces most popular ΔP switches/gauges
- Non-volatile memory
- User selectable program access code
- Universal input voltage

Programmable Parameters:

- Alarm Low/High setpoints
- Cleaning Low/High setpoints
- Alarm relay (normally open or normally closed)
- Cleaning relay (normally open or normally closed)
- Units of measure (inches, w.c. or kPa)
- Security code (user settable)
- ΔP offset compensation capability

The DUSTRONIX Pressure Differential Meter is designed to interface with NCC dust collector controls as well as other controllers. This meter is capable of measuring differential pressure and displaying that value in both analog bargraph and digital displays. Both Low/High Cleaning and Low/High Alarm setpoints can be programmed with relay outputs. The Cleaning relay will energize when the measured pressure exceeds the High Cleaning Setpoint, and will de-energize when the pressure goes below the Low Cleaning Setpoint. The Alarm relay will energize whenever the measured pressure exceeds the High or Low Alarm Setpoint.

The DUSTRONIX Pressure Differential Meter will accept either a 0 to 10" w.c. pressure input or a 4 to 20 mA input. A 4 to 20 mA output loop is provided when the internal pressure sensor is used. A 3-digit security code is also provided to prevent unauthorized changes. The meter is equipped with non-volatile memory which will store all operating parameters when power is removed.

Operating Logic: The DUSTRONIX Pressure Differential Meter is shipped with factory default settings (see details below). A pressure or 4 to 20 mA input needs to be connected, outputs wired as required, and power applied to have a functioning system. Program parameters can now be set for the specific application.

SPECIFICATIONS

FACTORY DEFAULT SETTINGS

Low Alarm Setpoint = 1.0
High Alarm Setpoint = 8.0
Low Cleaning Setpoint = 2.0
High Cleaning Setpoint = 4.0
Alarm Relay = AnO
Cleaning Relay = Cno
Units = IN
Security Code = 0.0.0.

INPUTS

Voltage: 100-240 VAC, 50/60 Hz
Power Consumption: 5 VA max. at 240 VAC

OUTPUTS

Alarm Output Type: Form A relay contact, programmable normally open or normally closed
Alarm Output Rating: 5 A at 240 VAC/30 VDC
Control Output Type: Form-A relay contact, programmable normally open or normally closed
Control Output Rating: 5 A at 240 VAC/30 VDC

CURRENT LOOP

Type: 4 to 20 mA current loop, switch selectable sink/source, represents 0 to 10" w.c. Δ pressure
Accuracy: ± 0.3 mA of displayed pressure
Measurement: Current of 4 to 20 mA or pressure of 0 to 10 in. water

MECHANICAL

Enclosure: 1/4 DIN meter face
Material: 304 stainless steel
Electrical Terminations: Removable screw terminals, 14-22 AWG
Pressure Terminations: Removable 0.125" hose-barb type fittings

PRESSURE SENSOR

Type: Silicon piezoresistive transducer
Measurement Range: 0.0 to 10.0 in. water (0-2.5 KPa)

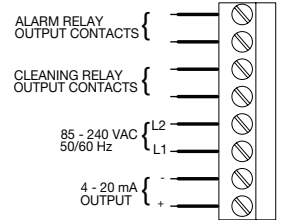
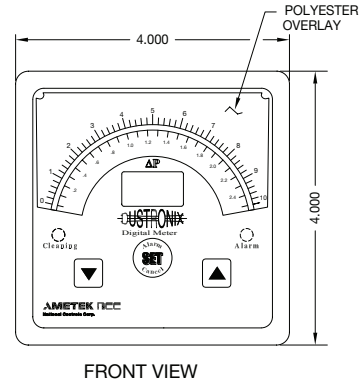
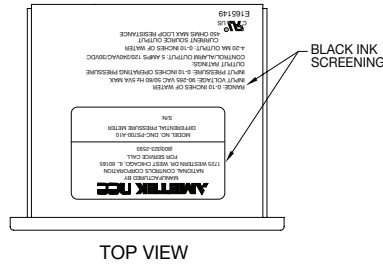
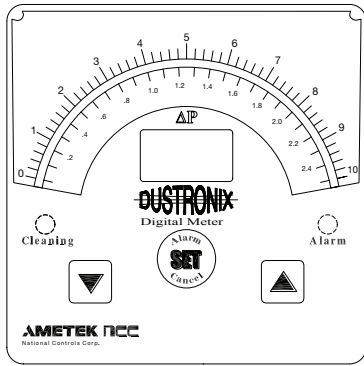


The PS700 may be purchased separately as an accessory to NCC Dust Collector Controls, as well as other controllers

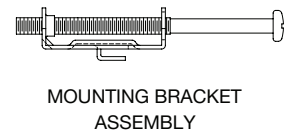
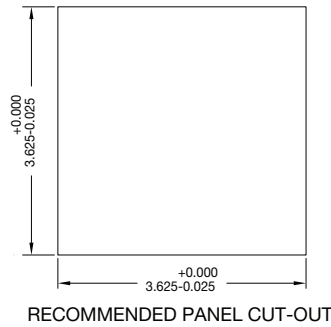
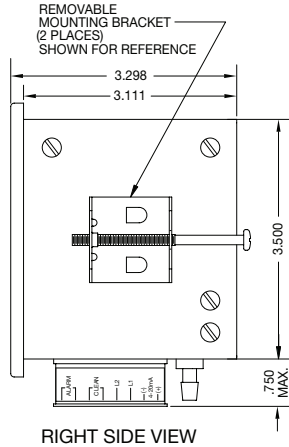
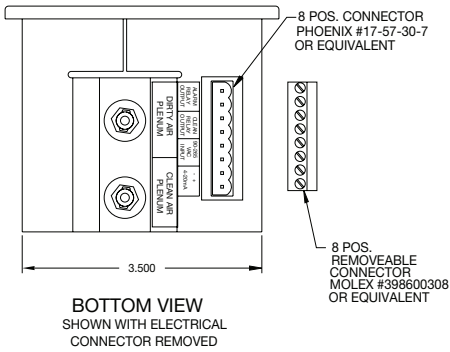
ORDERING INFORMATION

INPUT VOLTAGE	PART NUMBER
100 to 240 VAC	DNC-PS700-010

ACCESSORY	DIMENSIONS	PART NUMBER
NEMA 4 enclosure for DNC-PS700-010	8" x 6" x 3.5"	BOX-A0806-CHNF



ELECTRICAL CONNECTIONS
FOR REMOVEABLE 8 POSITION CONNECTOR



MOUNTING BRACKET ASSEMBLY

Accuracy: ±2% of full scale at 77°F (25°C); ±5% of full scale over temperature and voltage range

Maximum Continuous Pressure: 10 psi

DISPLAYS

Units: Programmable for in. water or kPa

Bargraph Display: 51 element tri-color LED analog differential pressure bargraph

Green = Differential pressure

Yellow = Cleaning setpoints

Red = Alarm setpoints

Digital Display: 3-digit, 7-segment differential pressure display, 0.3 in. tall

Range: 00.0 to 10.0 in. (00.0 to 02.5 KPa), shows "OPn" with no sensor connected or with vacuum applied

Discrete LED Indicators:

Cleaning = Green

Alarm = Red / Yellow

ENVIRONMENTAL

Operating Temperature Range: 32° to 150°F (0° to 65°C)

Protection: Conformal coating on PCB for humidity and vibration

Caution:

1. Do not mount controls in high vibration areas without shock mounts.
2. Do not mount controls in areas of high dust or corrosive atmospheres without a protective enclosure.
3. Do not use a converter or inverter for the power source.
4. Do not mount control in high transient voltage areas without an isolation transformer.
5. Do not leave control box open.
6. Do not allow a local repair shop to repair the controls, as we employ some very sophisticated components that could be further damaged. For service, call us directly: 800-323-2593.