

Series image - Reference only

EU RoHS

RoHS Compliant by Exemption

China RoHS



Search Parts in this Series

88759 Series

Part Number: **0887685500**

Status: **Active** **Overview:** **DMS-59®**

Description: 1.27mm (.050") Pitch DMS-59® (M) to Two DVI-D(M) Adapters Cable Assembly, 2.0m (6.56') Length

General

Product Family	Cable Assemblies
Series	<u>88759</u>
Connector to Connector	DMS-59™ to DVI-D
Overview	<u>DMS-59®</u>
Product Name	DMS59®

Physical

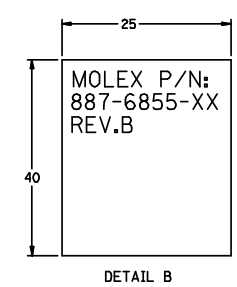
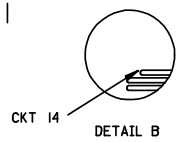
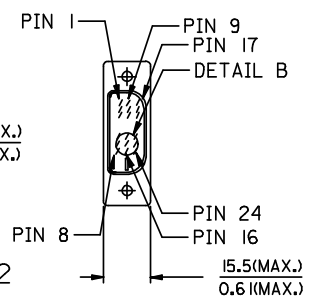
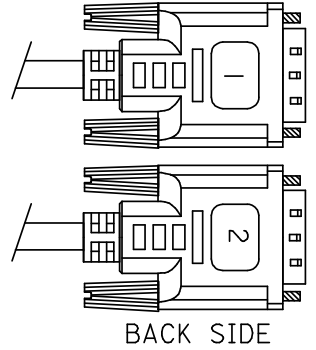
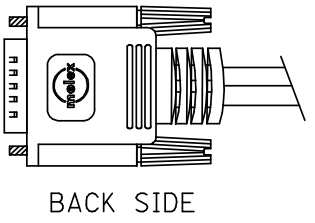
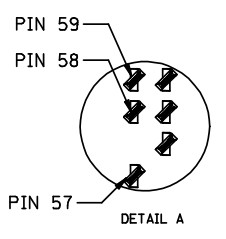
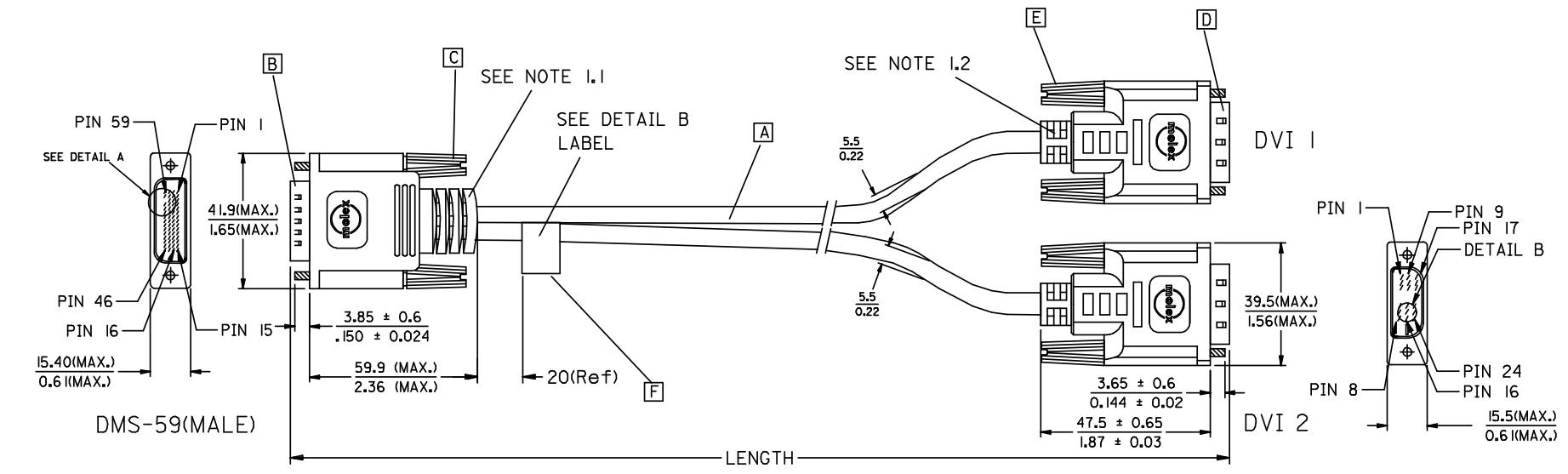
Cable Length	2.0m (6.56')
Circuits (Loaded)	59
Color - Resin	Black
Color - Resin	Black (D2)
Gender	Male-Male
Lock to Mating Part	Yes
Material - Metal	Aluminum
Material - Metal	Phosphor Bronze
Material - Plating Mating	Gold
Material - Plating Mating	n/a
Material - Plating Termination	Tin
Material - Resin	High Temperature Thermoplastic
Material - Resin	Polyester
Packaging Type	Bag
Pitch - Mating Interface (in)	0.050 In
Pitch - Mating Interface (mm)	1.27 mm
Plating min: Mating (uin)	10
Plating min: Mating (uin)	75
Plating min: Mating (um)	0.25
Plating min: Mating (um)	1.875
Plating min: Termination (uin)	100
Plating min: Termination (uin)	150
Plating min: Termination (um)	2.5
Plating min: Termination (um)	3.75
Single Ended	No
Termination Interface: Style	N/A
Termination Interface: Style	Solder or Weld
Termination Interface: Style	Through Hole
Wire Insulation Diameter	N/A
Wire Size AWG	30
Wire/Cable Type	Round

Electrical

Current - Maximum	1.000 Amp
Impedance	100 ohms
Shielded	Yes
Voltage - Maximum	30VAC

Material Info**Reference - Drawing Numbers**

Product Specification	PS-88768-55XX
Sales Drawing	SD-88744-099
Sales Drawing	SD-88768-099



ENTER DESCRIPTION EC NO: DG2009-0015 DRWN:XMLIANG CHKD: APPR:BLAU	2008/07/23	2008/07/23	2008/07/24
	DESCRIPTION	QUALITY SYMBOLS	DESCRIPTION
	REV	DESCRIPTION	QUALITY SYMBOLS
	D		

GENERAL TOLERANCES (UNLESS SPECIFIED)	
	mm INCH
4 PLACES	± --- ± ---
3 PLACES	± --- ± ---
2 PLACES	± --- ± ---
1 PLACE	± --- ± ---
ANGULAR ± ---°	
DRAFT WHERE APPLICABLE MUST REMAIN WITHIN DIMENSIONS	

DIMENSION STYLE	
MM/IN	
DRAWN BY	DATE
JL IU13	2007/11/07
CHECKED BY	DATE
BLAU	2007/11/07
APPROVED BY	DATE
BLAU	2007/11/07
MATERIAL NO.	SEE TABLE A
SIZE	A 4

SCALE	DESIGN UNITS	THIRD ANGLE PROJECTION
---	METRIC	
TITLE		
DMS59(M) TO TWO DVI-D(M) CABLE ASS'Y		
MOLEX MOLEX INCORPORATED		
MATERIAL NO.	DOCUMENT NO.	SHEET NO.
SEE TABLE A	SD-88744-099	1 OF 3
THIS DRAWING CONTAINS INFORMATION THAT IS PROPRIETARY TO MOLEX INCORPORATED AND SHOULD NOT BE USED WITHOUT WRITTEN PERMISSION		

WIRING DIAGRAM:

SHIELD	SHIELD	GROUND
PIN 24	PIN 32	DVI1_TXC-
PIN 23	PIN 31	DVI1_TXC+
PIN 22	PIN 57	DVI1_TXC RTN
PIN 19	PIN 33	DVI1_TX0 RTN
PIN 18	PIN 29	DVI1_TX0+
PIN 17	PIN 30	DVI1_TX0-
PIN 16	PIN 36	DVI1_HPD
PIN 15	PIN 54	Ground
PIN 14	PIN 5	+5V
PIN 11	PIN 34	DVI1_TX1 RTN
PIN 10	PIN 27	DVI1_TX1+
PIN 9	PIN 28	DVI1_TX1-
PIN 7	PIN 7	DVI1_SDA
PIN 6	PIN 6	DVI1_SCL
PIN 3	PIN 35	DVI1_TX2 RTN
PIN 2	PIN 25	DVI1_TX2+
PIN 1	PIN 26	DVI1_TX2-
DVI 1	DMS59	CABLE FUNCTION

SHIELD	SHIELD	GROUND
PIN 24	PIN 44	DVI2_TXC-
PIN 23	PIN 45	DVI2_TXC+
PIN 22	PIN 49	DVI2_TXC RTN
PIN 19	PIN 43	DVI2_TX0 RTN
PIN 18	PIN 16	DVI2_TX0+
PIN 17	PIN 17	DVI2_TX0-
PIN 16	PIN 40	DVI2_HPD
PIN 15	PIN 52	Ground
PIN 14	PIN 11	+5V
PIN 11	PIN 42	DVI2_TX1 RTN
PIN 10	PIN 18	DVI2_TX1+
PIN 9	PIN 19	DVI2_TX1-
PIN 7	PIN 9	DVI2_SDA
PIN 6	PIN 10	DVI2_SCL
PIN 3	PIN 41	DVI2_TX2 RTN
PIN 2	PIN 20	DVI2_TX2+
PIN 1	PIN 21	DVI2_TX2-
DVI 2	DMS59	CABLE FUNCTION

ENTER DESCRIPTION EC NO: DG2009-0015 DRWN:XMLIANG CHKD: APPR:BLAU	DESCRIPTION 2008/07/23 2008/07/23 2008/07/24	QUALITY SYMBOLS	GENERAL TOLERANCES (UNLESS SPECIFIED)		DIMENSION STYLE MM/IN		SCALE ---	DESIGN UNITS METRIC	THIRD ANGLE PROJECTION																				
		= 0 = 0	<table border="1"> <tr><th></th><th>mm</th><th>INCH</th></tr> <tr><td>4 PLACES</td><td>± ---</td><td>± ---</td></tr> <tr><td>3 PLACES</td><td>± ---</td><td>± ---</td></tr> <tr><td>2 PLACES</td><td>± ---</td><td>± ---</td></tr> <tr><td>1 PLACE</td><td>± ---</td><td>± ---</td></tr> <tr><td colspan="3">ANGULAR ± ---°</td></tr> </table>		mm	INCH	4 PLACES	± ---	± ---	3 PLACES	± ---	± ---	2 PLACES	± ---	± ---	1 PLACE	± ---	± ---	ANGULAR ± ---°			DRAWN BY JLIU13	DATE 2007/11/07	TITLE DMS59(M) TO TWO DVI-D(M) CABLE ASS'Y		MOLEX INCORPORATED		SHEET NO. 2 OF 3	
			mm	INCH																									
		4 PLACES	± ---	± ---																									
3 PLACES	± ---	± ---																											
2 PLACES	± ---	± ---																											
1 PLACE	± ---	± ---																											
ANGULAR ± ---°																													
DRAFT WHERE APPLICABLE MUST REMAIN WITHIN DIMENSIONS		CHECKED BY BLAU	DATE 2007/11/07																										
REV		APPROVED BY BLAU		DATE 2007/11/07	MATERIAL NO. SEE TABLE A		DOCUMENT NO. SD-88744-099		THIS DRAWING CONTAINS INFORMATION THAT IS PROPRIETARY TO MOLEX INCORPORATED AND SHOULD NOT BE USED WITHOUT WRITTEN PERMISSION																				

NOTE:1. OVERMOLD SPECIFICATION

- 1.1 DMS59 BOOT MOLDED WITH SNOW WHITE PVC RESIN,UL 94V-0.
- 1.2 DVI BOOT MOLDED WITH SNOW WHITE PVC RESIN,UL 94V-0.

2. MECHANICAL SPECIFICATION

- ▽2.1 CABLE SHOULD STAND THE PULL FORCE 89-111N FOR 30 SECONDS WITH NO VISIBLE TERMINATION DAMAGE.
- 2.2 CABLE SHOULD PASS THE FLEX TEST IN 100 CYCLES AT EACH OF PLANES, PER EIA 364-41, CONDITION 1.

3. PRODUCT ELECTRICAL SPECIFICATION

- ▽3.1 DIELECTRIC STRENGTH: 300V DC FOR 10mS.
- ▽3.2 INSULATION RESISTANCE: 20 MEGA Ohms(MIN.).
- ▽3.3 CONTACT RESISTANCE: 2 Ohms(MAX.).
- ▽3.4 DIFFERENTIAL LINES CHARACTERISTIC IMPEDANCE: 100±7 Ohms @TDR.
- 3.5 SIGNALS CROSSTALK(FEXT): 5% (MAX.) PER ANSI/EIA-364-90.
- 3.6 SIGNALS INTRA-PAIR SKEW (PER CABLE): <150 ps.
- 4.CONNECTOR PLATING: AU FLASH PLATING.
- 5.SHORTCIRCUIT AMONG DRAIN WIRES IS ACCEPTABLE.
- 6.SCREW SPEC.:4-40 UNC.

MATERIAL LIST:

F	LABEL	I
E	DVI THUMB SCREW (4-40UNC)	4
D	DVI_D SINGLE CHANNEL G/F CONNECTOR	2
C	LFH SCREW (4-40UNC)	2
B	DMS-59 PLUG ASSY(NATURE)	1
A	DVI-D SINGLE LINK CABLE	2
ITEM	DESCRIPTION	QTY.

TABLE A

88768-5510	DMS59(M) TO TWO DVI-D(M) S/L CABLE 3M	3000±60
88768-5500	DMS59(M) TO TWO DVI-D(M) S/L CABLE 2M	2000±50
MX-P/N	DESCRIPTION	LENGTH

ENTER DESCRIPTION EC NO: DG2008-0035 DRWN: JLIU13 CHKD:BLAU APPR:BLAU	2007/11/07 2007/11/16 2007/12/07	DESCRIPTION REV	QUALITY SYMBOLS	GENERAL TOLERANCES (UNLESS SPECIFIED)	DIMENSION STYLE	SCALE	DESIGN UNITS	THIRD ANGLE PROJECTION			
			▼=0 ▽=0	mm INCH 4 PLACES ± --- ± --- 3 PLACES ± --- ± --- 2 PLACES ± --- ± --- 1 PLACE ± --- ± --- ANGULAR ± ---°	MM/IN	---	METRIC	DRAWN BY DATE JLIU13 2007/11/07 CHECKED BY DATE BLAU 2007/11/07 APPROVED BY DATE BLAU 2007/11/07	TITLE DMS59(M) TO TWO DVI-D(M) CABLE ASS'Y		
			DRAFT WHERE APPLICABLE MUST REMAIN WITHIN DIMENSIONS				MATERIAL NO. DOCUMENT NO. SHEET NO. SEE TABLE A SD-88744-099 3 OF 3		MOLEX INCORPORATED		
							THIS DRAWING CONTAINS INFORMATION THAT IS PROPRIETARY TO MOLEX INCORPORATED AND SHOULD NOT BE USED WITHOUT WRITTEN PERMISSION				

NOTE:1. OVERMOLD SPECIFICATION

- 1.1 DMS59 BOOT MOLDED WITH SNOW WHITE PVC RESIN,UL 94V-0.
- 1.2 DVI BOOT MOLDED WITH SNOW WHITE PVC RESIN,UL 94V-0.

2. MECHANICAL SPECIFICATION

- ▽2.1 CABLE SHOULD STAND THE PULL FORCE 89-111N FOR 30 SECONDS WITH NO VISIBLE TERMINATION DAMAGE.
- 2.2 CABLE SHOULD PASS THE FLEX TEST IN 100 CYCLES AT EACH OF PLANES, PER EIA 364-41, CONDITION 1.

3. PRODUCT ELECTRICAL SPECIFICATION

- ▽3.1 DIELECTRIC STRENGTH: 300V DC FOR 10mS.
- ▽3.2 INSULATION RESISTANCE: 20 MEGA Ohms(MIN.).
- ▽3.3 CONTACT RESISTANCE: 2 Ohms(MAX.).
- ▽3.4 DIFFERENTIAL LINES CHARACTERISTIC IMPEDANCE: 100±7 Ohms @TDR.
- 3.5 SIGNALS CROSSTALK(FEXT): 5% (MAX.) PER ANSI/EIA-364-90.
- 3.6 SIGNALS INTRA-PAIR SKEW (PER CABLE): <150 ps.
- 4.CONNECTOR PLATING: AU FLASH PLATING.
- 5.SHORTCIRCUIT AMONG DRAIN WIRES IS ACCEPTABLE.
- 6.SCREW SPEC.:4-40 UNC.

MATERIAL LIST:

F	LABEL	I
E	DVI THUMB SCREW (4-40UNC)	4
D	DVI_D SINGLE CHANNEL G/F CONNECTOR	2
C	LFH SCREW (4-40UNC)	2
B	DMS-59 PLUG ASSY(NATURE)	1
A	DVI-D SINGLE LINK CABLE	2
ITEM	DESCRIPTION	QTY.

TABLE A

88768-5510	DMS59(M) TO TWO DVI-D(M) S/L CABLE 3M	3000±60
88768-5500	DMS59(M) TO TWO DVI-D(M) S/L CABLE 2M	2000±50
MX-P/N	DESCRIPTION	LENGTH

ENTER DESCRIPTION EC NO: DG2009-0015 DRWN:XMLIANG CHKD: APPR:BLAU	2008/07/23 2008/07/23 2008/07/24	DESCRIPTION REV	QUALITY SYMBOLS	GENERAL TOLERANCES (UNLESS SPECIFIED)	DIMENSION STYLE	SCALE	DESIGN UNITS	THIRD ANGLE PROJECTION															
			= 0 = 0	<table border="1"> <thead> <tr> <th></th> <th>mm</th> <th>INCH</th> </tr> </thead> <tbody> <tr> <td>4 PLACES</td> <td>± ---</td> <td>± ---</td> </tr> <tr> <td>3 PLACES</td> <td>± ---</td> <td>± ---</td> </tr> <tr> <td>2 PLACES</td> <td>± ---</td> <td>± ---</td> </tr> <tr> <td>1 PLACE</td> <td>± ---</td> <td>± ---</td> </tr> </tbody> </table>		mm	INCH	4 PLACES	± ---	± ---	3 PLACES	± ---	± ---	2 PLACES	± ---	± ---	1 PLACE	± ---	± ---	MM/IN	---	METRIC	
				mm	INCH																		
			4 PLACES	± ---	± ---																		
3 PLACES	± ---	± ---																					
2 PLACES	± ---	± ---																					
1 PLACE	± ---	± ---																					
	DRAWN BY: JLIU13 CHECKED BY: BLAU APPROVED BY: BLAU DATE: 2007/11/07 DATE: 2007/11/07 DATE: 2007/11/07	TITLE	DMS59(M) TO TWO DVI-D(M) CABLE ASS'Y																				
	DRAFT WHERE APPLICABLE MUST REMAIN WITHIN DIMENSIONS	MATERIAL NO. SEE TABLE A DOCUMENT NO. SD-88768-099 SHEET NO. 3 OF 3	MOLEX INCORPORATED THIS DRAWING CONTAINS INFORMATION THAT IS PROPRIETARY TO MOLEX INCORPORATED AND SHOULD NOT BE USED WITHOUT WRITTEN PERMISSION																				

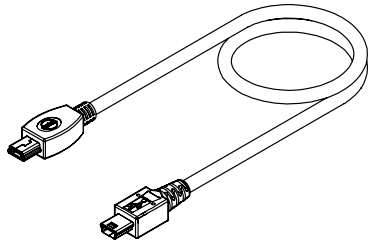
Universal Serial Bus (USB) On-The-Go (OTG) Shielded I/O Cable Assembly

88732

Standard USB A to Mini B

88753

Mini A to Mini B



Features and Benefits

- Approximately 1/8 the size of standard USB-B connectors
- Connector-to-connector polarization ensures proper mating
- Full shield provides EMI/RFI protection
- Meets USB 2.0 specifications
- Compact and lightweight design meets various portable and mobile equipment needs
- Rugged durability up to 5,000 cycles
- Other cable lengths and custom designs available

Reference Information

Product Specification: PS-87525
Packaging: Bag or custom-specified
Mates With: USB A, Mini AB and Mini B receptacle
Designed In: Millimeters

Electrical

Voltage: 30V
Current: 1.0A
Contact Resistance: 50 milliohms max.
Dielectric Withstanding Voltage: 100V AC/min.
Insulation Resistance: 100 Megohms min.

Mechanical

Mating Force: 35N max.
Unmating Force: 10N min.
Durability: USB A—1500 cycles
Mini A and Mini B—5000 cycles

Physical

Contact: Copper Alloy
Plating: Contact Area—0.75µm (30µ") min. Gold
Underplating: Nickel
Wire Gauge: 28 AWG
Operating Temperature: 0 to +50°C

Cable Assembly Lengths (mm)	Order No.	Description	Lead-free
800 White	88732-8510	USB A to Mini B, USB 1.1	Yes
800 Black	88732-8512		
1000 White	88732-8610		
1000 Black	88732-8612		
1500 White	88732-8710		
1500 Black	88732-8712		
1800 White	88732-8810		
1800 Black	88732-8812		
2000 White	88732-8910		
2000 Black	88732-8912		
800 White	88732-8500	USB A to Mini B, USB 2.0	Yes
800 Black	88732-8502		
1000 White	88732-8600		
1000 Black	88732-8602		
1500 White	88732-8700		
1500 Black	88732-8702		
1800 White	88732-8800		
1800 Black	88732-8802		
2000 White	88732-8900		
2000 Black	88732-8902		

Cable Assembly Lengths (mm)	Order No.	Description	Lead-free		
800 White	88753-8110	USB Mini A to Mini B, USB 1.1	Yes		
1000 White	88753-8210				
1200 White	88753-8310				
1500 White	88753-8410				
1800 White	88753-8510				
2000 White	88753-8610				
800 White	88753-8100			USB Mini A to Mini B, USB 2.0	Yes
800 Black	88753-8102				
1000 White	88753-8200				
1000 Black	88753-8202				
1200 White	88753-8300				
1200 Black	88753-8302				
1500 White	88753-8400				
1500 Black	88753-8402				
1800 White	88753-8500				
1800 Black	88753-8502				
2000 White	88753-8600				
2000 Black	88753-8602				

I/O Products

N

DMS-59™ Shielded I/O Cable Assembly

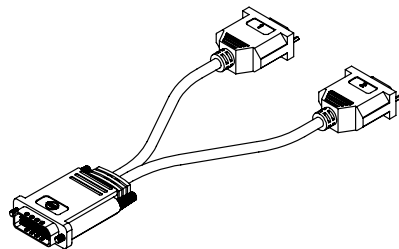
88759

DMS-59 To Dual VGA

DMS-59 To VGA/DVI Analog

DMS-59 To Dual DVI Analog

DMS-59 To Dual DVI Digital



Features and Benefits

- Keyed (void pin number 58) to ensure exclusive mating of receptacle with DMS-59 cable assemblies
- Proven LFH™ (Low Force Helix) high-cycle contact interface system for reliable system life
- Cable assemblies are available in a variety of lengths and configurations

Reference Information

Product Specification: PS-88768-5300
Packaging: Bag
Mates With: DMS-59 receptacle
Designed In: Millimeters

Electrical

Voltage: 30V
Current: 1.0A
Contact Resistance: 50 milliohms max.
Dielectric Withstanding Voltage: 500V DC
Insulation Resistance: 100 Megohms min.

Mechanical

Insertion Force: 53N max.
Withdraw Force: 22N min.
Durability: 5000 cycles

Physical

Housing: White glass-filled LCP, UL 94V-0
Contact: Copper Alloy
Plating: Contact Area—0.75µm (30µ") min. Gold
Underplating: Nickel
Wire Gauge: 30 AWG
Operating Temperature: 0 to +80°C

Cable Length (mm)	Order No.	Cable Assembly Description	Lead-free
200	88768-5200	DMS-59-Male to Two VGA-Female Cable Assembly	Yes
	88768-5300	DMS-59-Male to Two DVI-I-Female Cable Assembly	
	88768-5400	DMS-59-Male to VGA-Female + DVI-I-Female Cable Assembly	
2000	88768-5500	DMS-59-Male to Two DVI-D-Male Single Link Cable Assembly	Yes
3000	88768-5510		

