

Series image - Reference only

EU RoHS

ELV and RoHS Compliant

China RoHS



Search Parts in this Series

88759 Series

Part Number: **0887685200**

Status: **Active** **Overview:** **DMS-59®**

Description: 1.27mm (.050") Pitch DMS-59® to Two VGA Adapters Cable Assembly, 0.20m (7.87") Length

General

Product Family	Cable Assemblies
Series	<u>88759</u>
Connector to Connector	DMS-59™ to VGA
Overview	<u>DMS-59®</u>
Product Name	DMS59®

Physical

Cable Length	0.20m (7.87")
Circuits (Loaded)	59
Color - Resin	Black (D2)
Color - Resin	Natural
Gender	Male-Female
Lock to Mating Part	Yes
Material - Metal	Aluminum
Material - Metal	Phosphor Bronze
Material - Plating Mating	Gold
Material - Plating Mating	n/a
Material - Plating Termination	Tin
Material - Resin	High Temperature Thermoplastic
Material - Resin	Low Density Polyethylene
Packaging Type	Bag
Pitch - Mating Interface (in)	0.050 In
Pitch - Mating Interface (mm)	1.27 mm
Plating min: Mating (uin)	75
Plating min: Mating (um)	1.875

Plating min: Termination (uin)	100
Plating min: Termination (um)	2.5
Single Ended	No
Termination Interface: Style	N/A
Termination Interface: Style	Through Hole
Wire Insulation Diameter	N/A
Wire Size AWG	32
Wire/Cable Type	Round

Electrical

Current - Maximum	1.000 Amp
Impedance	75 ohms
Shielded	Yes
Voltage - Maximum	30VAC

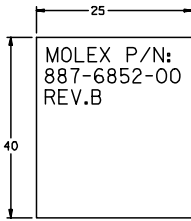
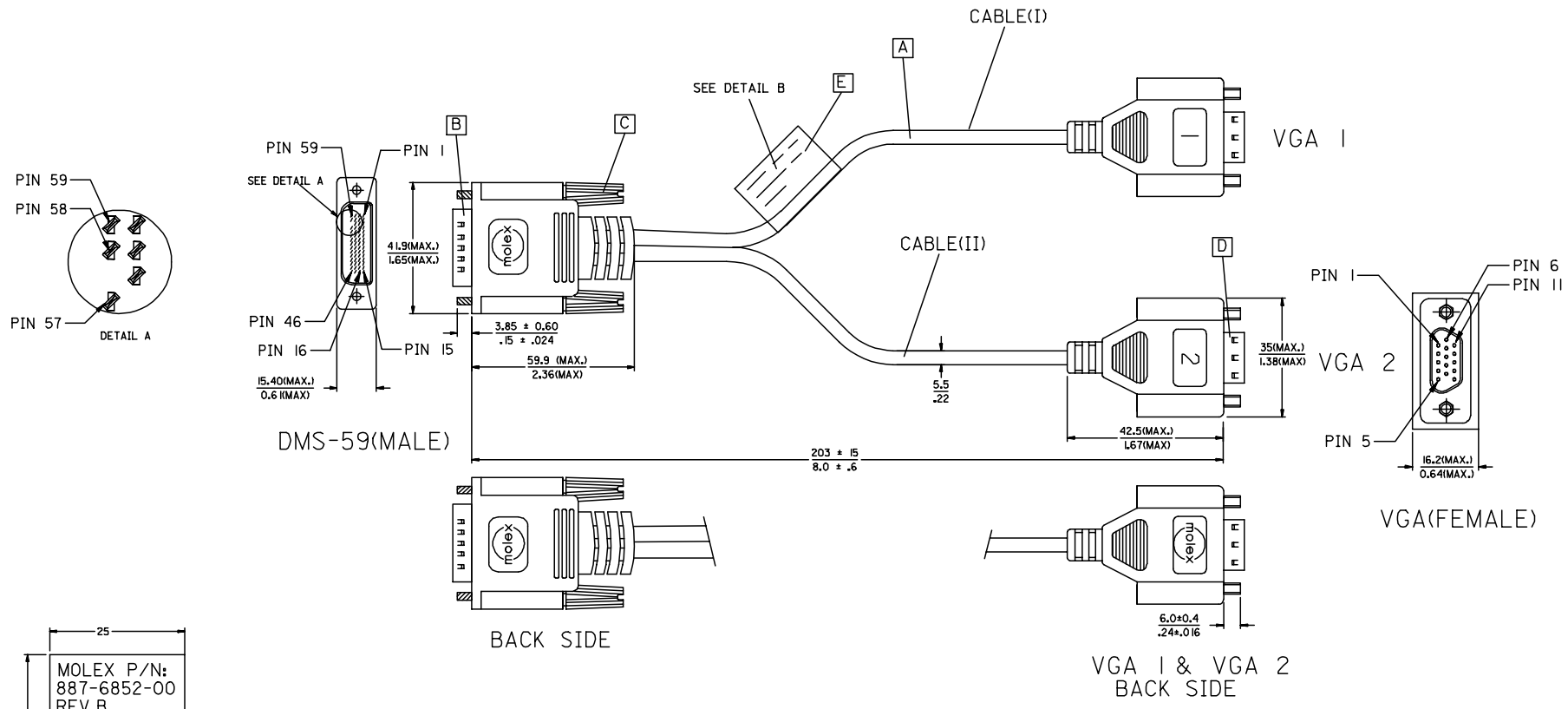
Material Info

Reference - Drawing Numbers

Product Specification	PS-88768-5200
Sales Drawing	SD-88744-096

7 6 5 4 3 2 1

E
D
C
B
A



ENTER DESCRIPTION EC NO: DG2006-0186 DRWN:PDAI CHKD: APPR:TKAN	2006/03/09 2006/03/09 2006/03/10	QUALITY SYMBOLS ▽=0 ◻=0	GENERAL TOLERANCES (UNLESS SPECIFIED)		DIMENSION STYLE MM/IN		SCALE ---	DESIGN UNITS METRIC	THIRD ANGLE PROJECTION		
			4 PLACES ± --- ± --- 3 PLACES ± --- ± --- 2 PLACES ± --- ± --- 1 PLACE ± --- ± ---	mm INCH	DRAWN BY PDAI	DATE 2006/03/07	TITLE DMS59(M) TO TWO VGA(F) ADAPTER CABLE				
			ANGULAR ± ---°		CHECKED BY ZXDENG	DATE 2006/03/07	MOLEX MOLEX INCORPORATED				
			DRAFT WHERE APPLICABLE MUST REMAIN WITHIN DIMENSIONS		APPROVED BY BORON	DATE 2006/03/07	MATERIAL NO. 887685200	DOCUMENT NO. SD-88744-096	SHEET NO. 1 OF 2		

6 5 4 3 2 1

WIRING DIAGRAM:

SHIELD	SHIELD	GROUND
PIN 59	PIN 7	GROUND(GREEN)
PIN 58	PIN 2	RGB1_GREEN
PIN 57	PIN 5	GROUND(ANALOG)
PIN 56	PIN 13	RGB1_HSYNC
PIN 55	PIN 14	RGB1_VSYNC
PIN 54	PIN 10	GROUND(SYNCS)
PIN 7	PIN 12	RGB1_SDA(DDC DATA)
PIN 6	PIN 15	RGB1_SCL(DDC CLOCK)
PIN 5	PIN 9	+5V
PIN 4	PIN 8	GROUND(BLUE)
PIN 3	PIN 3	RGB1_BLUE
PIN 2	PIN 1	RGB1_RED
PIN 1	PIN 6	GROUND(RED)
DMS-59	VGA1	CABLE FUNCTION

SHIELD	SHIELD	GROUND
PIN 46	PIN 7	GROUND(GREEN)
PIN 47	PIN 2	RGB2_GREEN
PIN 49	PIN 5	GROUND(ANALOG)
PIN 50	PIN 13	RGB2_HSYNC
PIN 51	PIN 14	RGB2_VSYNC
PIN 52	PIN 10	GROUND(SYNCS)
PIN 9	PIN 12	RGB2_SDA(DDC DATA)
PIN 10	PIN 15	RGB2_SCL(DDC CLOCK)
PIN 11	PIN 9	+5V
PIN 12	PIN 8	GROUND(BLUE)
PIN 13	PIN 3	RGB2_BLUE
PIN 14	PIN 1	RGB2_RED
PIN 15	PIN 6	GROUND(RED)
DMS-59	VGA2	CABLE FUNCTION

NOTE:1. OVERMOLD SPECIFICATION

- 1.1 DMS-59 BOOT MOLDED WITH SNOW WHITE PVC RESIN, UL94V-0.
- 1.2 VGA BOOT MOLDED WITH BLUE PVC RESIN, UL94V-0.

2. MECHANICAL SPECIFICATION

- 2.1 CABLE SHOULD STAND THE PULL FORCE 89-111N FOR 30 SECONDS WITH NO VISIBLE TERMINATION DAMAGE.
- 2.2 CABLE SHOULD PASS THE FLEX TEST IN 100 CYCLES AT EACH OF PLANES, PER EIA 364-41, CONDITION I.

3. CABLE ASSEMBLY ELECTRICAL SPECIFICATION

- 3.1 HI-POT VOLTAGE: 300VDC FOR 10ms.
- 3.2 INSULATION RESISTANCE: 20 MEGA Ohms MIN.
- 3.3 CONNECTION RESISTANCE: 2 Ohms MAX.
- 3.4 COAXIAL LINES CHARACTERISTIC IMPEDANCE: 75 ±10% Ohms @TDR
- 3.5 WRAP COPPER TAPE OVER BRAID, THEN CRIMP THE METAL CAN ON COPPER TAPE WITH 360°.
- 4. DVI CONNECTOR PLATING: AU FLASH PLATING.
- 5. SCREW SPEC.: 4-40 UNC.

MATERIAL LIST:

E	LABEL	I
D	VGA D-SUB CONNECTOR(FEMALE)	2
C	LFH THUMB SCREW 4-40 UNC	2
B	DMS-59 PLUG ASSY'(NATURE)	1
A	DVI ANALOG CABLE BLACK	2
ITEM	DESCRIPTION	QTY.

ENTER DESCRIPTION EC NO: DG2006-0186 DRWN:PDAI 2006/03/09 CHKD: 2006/03/09 APPR:TKAN 2006/03/10	QUALITY SYMBOLS ▽=0 ◻=0	GENERAL TOLERANCES (UNLESS SPECIFIED)		DIMENSION STYLE		SCALE	DESIGN UNITS	THIRD ANGLE PROJECTION	
			mm	INCH	MM/IN		---	METRIC	
		4 PLACES	±---	±---	DRAWN BY	DATE	TITLE		
		3 PLACES	±---	±---	PDAI	2006/03/07	DMS59(M) TO TWO VGA(F) ADAPTER CABLE		
2 PLACES	±---	±---	CHECKED BY	DATE					
1 PLACE	±---	±---	ZXDENG	2006/03/07					
ANGULAR ±---°		APPROVED BY		DATE	MOLEX MOLEX INCORPORATED				
		BORON		2006/03/07					
DRAFT WHERE APPLICABLE MUST REMAIN WITHIN DIMENSIONS		MATERIAL NO.		DOCUMENT NO.	SHEET NO.				
		887685200		SD-88744-096	2 OF 2				
		SIZE		THIS DRAWING CONTAINS INFORMATION THAT IS PROPRIETARY TO MOLEX INCORPORATED AND SHOULD NOT BE USED WITHOUT WRITTEN PERMISSION					
		A 4							

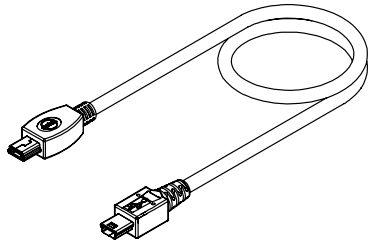
Universal Serial Bus (USB) On-The-Go (OTG) Shielded I/O Cable Assembly

88732

Standard USB A to Mini B

88753

Mini A to Mini B



Features and Benefits

- Approximately 1/8 the size of standard USB-B connectors
- Connector-to-connector polarization ensures proper mating
- Full shield provides EMI/RFI protection
- Meets USB 2.0 specifications
- Compact and lightweight design meets various portable and mobile equipment needs
- Rugged durability up to 5,000 cycles
- Other cable lengths and custom designs available

Reference Information

Product Specification: PS-87525
Packaging: Bag or custom-specified
Mates With: USB A, Mini AB and Mini B receptacle
Designed In: Millimeters

Electrical

Voltage: 30V
Current: 1.0A
Contact Resistance: 50 milliohms max.
Dielectric Withstanding Voltage: 100V AC/min.
Insulation Resistance: 100 Megohms min.

Mechanical

Mating Force: 35N max.
Unmating Force: 10N min.
Durability: USB A—1500 cycles
Mini A and Mini B—5000 cycles

Physical

Contact: Copper Alloy
Plating: Contact Area—0.75µm (30µ") min. Gold
Underplating: Nickel
Wire Gauge: 28 AWG
Operating Temperature: 0 to +50°C

Cable Assembly Lengths (mm)	Order No.	Description	Lead-free
800 White	88732-8510	USB A to Mini B, USB 1.1	Yes
800 Black	88732-8512		
1000 White	88732-8610		
1000 Black	88732-8612		
1500 White	88732-8710		
1500 Black	88732-8712		
1800 White	88732-8810		
1800 Black	88732-8812		
2000 White	88732-8910		
2000 Black	88732-8912		
800 White	88732-8500	USB A to Mini B, USB 2.0	Yes
800 Black	88732-8502		
1000 White	88732-8600		
1000 Black	88732-8602		
1500 White	88732-8700		
1500 Black	88732-8702		
1800 White	88732-8800		
1800 Black	88732-8802		
2000 White	88732-8900		
2000 Black	88732-8902		

Cable Assembly Lengths (mm)	Order No.	Description	Lead-free		
800 White	88753-8110	USB Mini A to Mini B, USB 1.1	Yes		
1000 White	88753-8210				
1200 White	88753-8310				
1500 White	88753-8410				
1800 White	88753-8510				
2000 White	88753-8610				
800 White	88753-8100			USB Mini A to Mini B, USB 2.0	Yes
800 Black	88753-8102				
1000 White	88753-8200				
1000 Black	88753-8202				
1200 White	88753-8300				
1200 Black	88753-8302				
1500 White	88753-8400				
1500 Black	88753-8402				
1800 White	88753-8500				
1800 Black	88753-8502				
2000 White	88753-8600				
2000 Black	88753-8602				

I/O Products

N

DMS-59™ Shielded I/O Cable Assembly

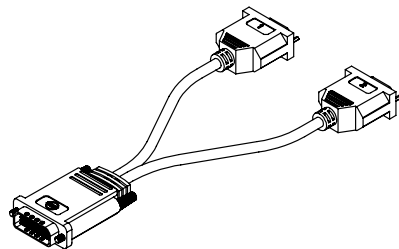
88759

DMS-59 To Dual VGA

DMS-59 To VGA/DVI Analog

DMS-59 To Dual DVI Analog

DMS-59 To Dual DVI Digital



Features and Benefits

- Keyed (void pin number 58) to ensure exclusive mating of receptacle with DMS-59 cable assemblies
- Proven LFH™ (Low Force Helix) high-cycle contact interface system for reliable system life
- Cable assemblies are available in a variety of lengths and configurations

Reference Information

Product Specification: PS-88768-5300
Packaging: Bag
Mates With: DMS-59 receptacle
Designed In: Millimeters

Electrical

Voltage: 30V
Current: 1.0A
Contact Resistance: 50 milliohms max.
Dielectric Withstanding Voltage: 500V DC
Insulation Resistance: 100 Megohms min.

Mechanical

Insertion Force: 53N max.
Withdraw Force: 22N min.
Durability: 5000 cycles

Physical

Housing: White glass-filled LCP, UL 94V-0
Contact: Copper Alloy
Plating: Contact Area—0.75µm (30µ") min. Gold
Underplating: Nickel
Wire Gauge: 30 AWG
Operating Temperature: 0 to +80°C

Cable Length (mm)	Order No.	Cable Assembly Description	Lead-free
200	88768-5200	DMS-59-Male to Two VGA-Female Cable Assembly	Yes
	88768-5300	DMS-59-Male to Two DVI-I-Female Cable Assembly	
	88768-5400	DMS-59-Male to VGA-Female + DVI-I-Female Cable Assembly	
2000	88768-5500	DMS-59-Male to Two DVI-D-Male Single Link Cable Assembly	Yes
3000	88768-5510		

