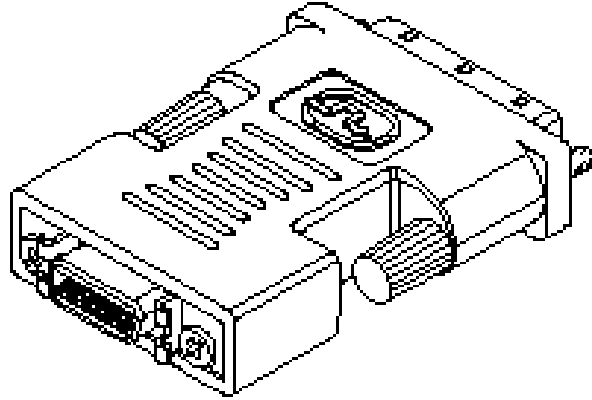


I/O Connectors Datasheet



Series image - Reference only

EU RoHS

China RoHS

ELV and RoHS Compliant

Search Parts in this Series

88744 Series

Mates With

74320 receptacles

Part Number: **0887418800**



Status: **Active**

Description: MicroCross™ DVI Digital Visual Interface, Shielded I/O Adapter, DVI-Digital Plug to DFP Receptacle

Documents:

- [Drawing \(PDF\)](#)
- [Related Catalog Page \(PDF\)](#)

Order Products:

-  [Check Distributor Inventory](#)
-  [Request Samples](#)

Part Detail: [\(show all\)](#)

- General**
- Physical**
- Electrical**
- Material Info**
- Reference - Drawing Numbers**

General

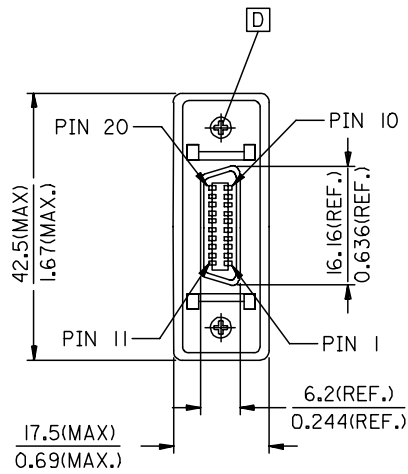
Product Family	I/O Connectors
Series	88744
Application	Wire-to-Board
Comments	DVI-Digital Plug to DFP Receptacle
Component Type	Adapter
Product Name	MicroCross™DVI
Type	N/A

Physical

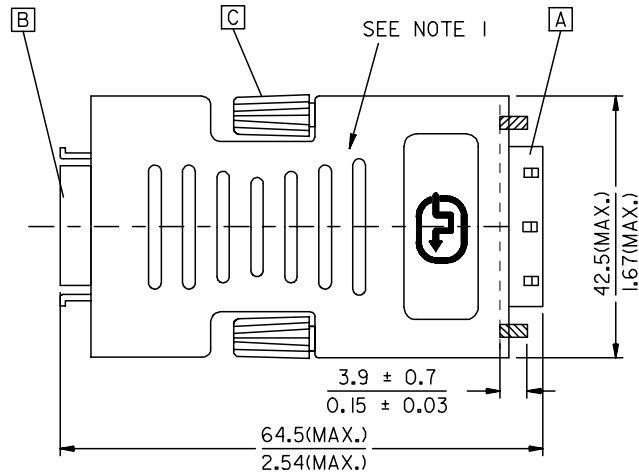
Circuits (Loaded)	24
Circuits (maximum)	24
Color - Resin	Black
Durability (mating cycles) min	100 cycles
Lock to Mating Part	Yes
Material - Metal	Phosphor Bronze
Material - Plating Mating	Gold
Material - Plating Termination	Tin
Material - Resin	Polyester
Number of Rows	3
Orientation	Vertical
PCB Retention	Yes
Packaging Type	Bag
Panel Mount	No
Pitch - Mating Interface (in)	0.075 In
Pitch - Mating Interface (mm)	1.90 mm
Plating min: Mating (uin)	10
Plating min: Mating (um)	0.25
Plating min: Termination (uin)	150
Plating min: Termination (um)	3.80
Polarized to Mating Part	Yes
Surface Mount Compatible (SMC)	N/A
Temperature Range - Operating	-20°C to +85°C
Termination Interface: Style	N/A
Wire Size AWG	N/A

Electrical

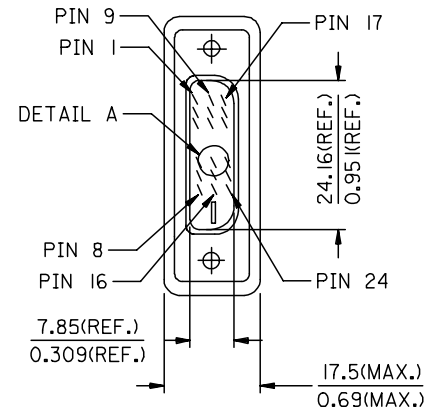
Current - Maximum	3.000 Amp
Shielded	Yes
Voltage - Maximum	40V



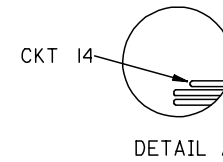
DFP(F)



BACK SIDE



DVI_D(M)



ENTER DESCRIPTION EC NO: DG2006-0186 DRWN:PDAI 2006/03/09 CHKD: 2006/03/09 APPR:TKAN 2006/03/10	QUALITY SYMBOLS = 0 = 0.05	GENERAL TOLERANCES (UNLESS SPECIFIED)		DIMENSION STYLE MM/IN	SCALE ---	DESIGN UNITS METRIC	THIRD ANGLE PROJECTION																																	
		<table border="1"> <thead> <tr> <th></th> <th>mm</th> <th>INCH</th> </tr> </thead> <tbody> <tr> <td>4 PLACES</td> <td>± ---</td> <td>± ---</td> </tr> <tr> <td>3 PLACES</td> <td>± ---</td> <td>± ---</td> </tr> <tr> <td>2 PLACES</td> <td>± ---</td> <td>± ---</td> </tr> <tr> <td>1 PLACE</td> <td>± ---</td> <td>± ---</td> </tr> </tbody> </table>		mm	INCH	4 PLACES	± ---	± ---	3 PLACES	± ---	± ---	2 PLACES	± ---	± ---	1 PLACE	± ---	± ---	<table border="1"> <thead> <tr> <th>DRAWN BY</th> <th>DATE</th> <th>TITLE</th> </tr> </thead> <tbody> <tr> <td>PDAI</td> <td>2006/03/07</td> <td>DVI_D(M)-DFP(F) ADAPTER</td> </tr> <tr> <th>CHECKED BY</th> <th>DATE</th> <td></td> </tr> <tr> <td>ZXDENG</td> <td>2006/03/07</td> <td></td> </tr> <tr> <th>APPROVED BY</th> <th>DATE</th> <td></td> </tr> <tr> <td>BORON</td> <td>2006/03/07</td> <td></td> </tr> </tbody> </table>	DRAWN BY	DATE	TITLE	PDAI	2006/03/07	DVI_D(M)-DFP(F) ADAPTER	CHECKED BY	DATE		ZXDENG	2006/03/07		APPROVED BY	DATE		BORON	2006/03/07		MOLEX INCORPORATED			
		mm	INCH																																					
	4 PLACES	± ---	± ---																																					
3 PLACES	± ---	± ---																																						
2 PLACES	± ---	± ---																																						
1 PLACE	± ---	± ---																																						
DRAWN BY	DATE	TITLE																																						
PDAI	2006/03/07	DVI_D(M)-DFP(F) ADAPTER																																						
CHECKED BY	DATE																																							
ZXDENG	2006/03/07																																							
APPROVED BY	DATE																																							
BORON	2006/03/07																																							
	DRAFT WHERE APPLICABLE MUST REMAIN WITHIN DIMENSIONS		MATERIAL NO. 88741-8800	DOCUMENT NO. SD-88741-009	SHEET NO. 1 OF 2																																			
	THIS DRAWING CONTAINS INFORMATION THAT IS PROPRIETARY TO MOLEX INCORPORATED AND SHOULD NOT BE USED WITHOUT WRITTEN PERMISSION																																							

NOTE:1. MOLD WITH SNOW WHITE PVC RESIN 887800077 FOR ADAPTOR COVER.

2. DVI CONNCEOTOR SPECIFICATION

2.1 REFER TO PRODUCT SPEC. PS74320-0001.

2.2 CONTACT PLATING: AU FLASH.

3. ELECTRICAL PERFORMANCE

3.1 INSULATION RESISANCE: 20M Ohms Min

3.2 DIELECTRIC STRENGTH: 300V DC FOR 10 MILLISECONDS.

4. ADAPTOR SPECIFICATION

4.1 REFER TO PRODUCT SPEC. PS88741-8800.

5. THIS PRODUCT MUST MEET MX RoHS COMPLIANCE.

6. CONNECTION DIAGRAM

SHIEDL	SHIELD	GROUND
PIN 6	PIN 24	TMDS CLOCK-
PIN 5	PIN 23	TMDS CLOCK+
PIN 4	PIN 22	TMDS CLOCK SHIELD
PIN 14	PIN 19	TMDS DATA 0 SHIELD
PIN 15	PIN 18	TMDS DATA 0+
PIN 16	PIN 17	TMDS DATA 0-
PIN 18	PIN 16	HOT PLUG DETECT
PIN 7	PIN 15	GROUND(+5V & HV SYNC.)
PIN 8	PIN 14	POWER +5V
PIN 3	PIN 11	TMDS DATA 1 SHIELD
PIN 1	PIN 10	TMDS DATA 1+
PIN 2	PIN 9	TMDS DATA 1-
PIN 19	PIN 7	DDC DATA
PIN 20	PIN 6	DDC CLOCK
PIN 13	PIN 3	TMDS DATA 2 SHIELD
PIN 11	PIN 2	TMDS DATA 2+
PIN 12	PIN 1	TMDS DATA 2-
DFP(F)	DVI_D	CABLE FUNCTION

7. MATERIAL LIST

ITEM	DESCRIPTION
D	DFP CONNECTOR FEMALE SCREW 887806063
C	SCREW (FOR COVER) 887806003
B	DFP FEMALE CONNECTOR 887899292
A	DVI_D SINGLE CHANNEL G/F CONNECTOR 743230001

ENTER DESCRIPTION EC NO: DG2006-0186 DRWN:PDAI 2006/03/09 CHKD: 2006/03/09 APPR:TKAN 2006/03/10 D REV	QUALITY SYMBOLS ▽=0 ▽=0	GENERAL TOLERANCES (UNLESS SPECIFIED)		DIMENSION STYLE MM/IN		SCALE ---	DESIGN UNITS METRIC	THIRD ANGLE PROJECTION		
		4 PLACES ± --- ± ---	3 PLACES ± --- ± ---	2 PLACES ± --- ± ---	1 PLACE ± --- ± ---	mm	INCH	DRAWN BY PDAI DATE 2006/03/07		
		ANGULAR ± ---°				CHECKED BY ZXDENG DATE 2006/03/07			APPROVED BY BORON DATE 2006/03/07	
		DRAFT WHERE APPLICABLE MUST REMAIN WITHIN DIMENSIONS				MATERIAL NO. 88741-8800		DOCUMENT NO. SD-88741-009		SHEET NO. 2 OF 2

TITLE DVI_D(M)-DFP(F) ADAPTER

MOLEX INCORPORATED