



Series image - Reference only

EU RoHS

ELV and RoHS Compliant

China RoHS



Search Parts in this Series

84702 Series

Mates With

847000001 Modular Jack

EtherNet/IP™ PCB Mount Receptacle Jack 847020005, 847020007

EtherNet/IP™ Punchdown Panel Mount Receptacle Jack 847020006,
847020008

Part Number: **0847022020**

Status: **Active** **Overview:** RJ-45 Ethernet

Description: Ethernet/IP™ Double End RJ-45, IP67 Bayonet Plug to RJ-45 Plug, 6.10m (20.0') Length

General

Product Family	Cable Assemblies
Series	<u>84702</u>
Comments	Industrial Type, Gray Cable, Black Overmold
Connector to Connector	RJ45 to RJ45
Overview	<u>RJ-45 Ethernet</u>
Product Name	Industrial
Product Name	RJ45

Physical

Cable Length	6.10m (20.0')
Circuits (Loaded)	8/8
Color - Resin	Black
Gender	Male-Male
Lock to Mating Part	Yes
Material - Resin	Polyester
Material - Resin	PVC
Packaging Type	Bag
Single Ended	No
Termination Interface: Style	N/A
Wire Insulation Diameter	N/A
Wire Size AWG	24
Wire/Cable Type	Round

Electrical

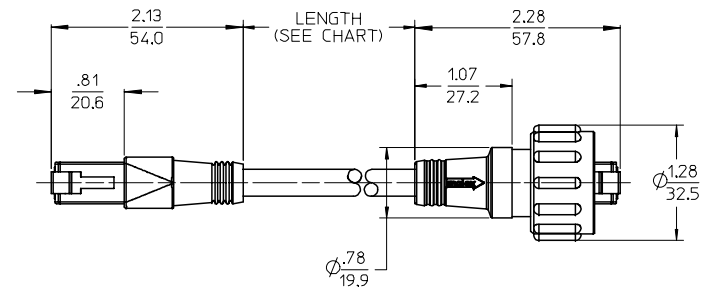
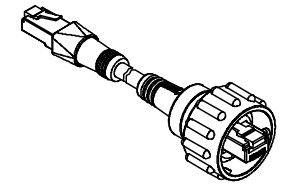
Current - Maximum	1.500 Amp
Shielded	Yes
Voltage - Maximum	125V

Material Info

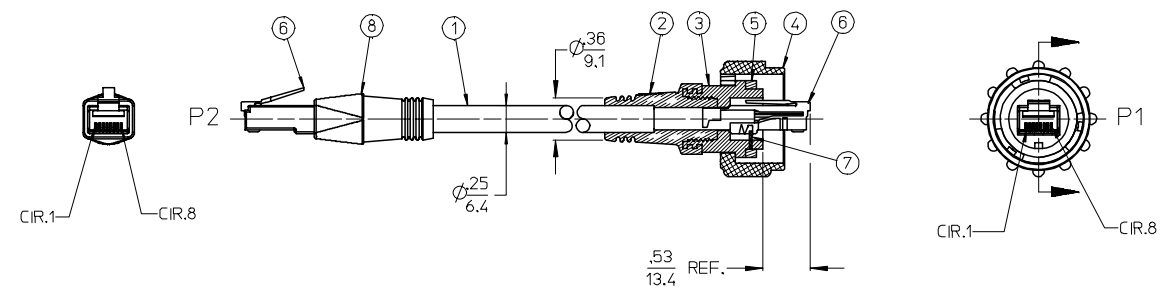
Reference - Drawing Numbers

13 12 11 10 9 8 7 6 5 4 3 2 1

MATERIAL NO.	FINISHED LENGTH
847022001	1'0" +1/4"-0 [.3M +6.4mm-0]
847022003	3'0" +3/4"-0 [.9M +19mm-0]
847022006	6'0" +1 1/2"-0 [1.8M +38mm-0]
847022007	7'0" +1 3/4"-0 [2.1M +44mm-0]
847022009	9' 0" +2 1/2"-0 [2.74M +64mm -0]
847022010	10' 0" +2 1/2"-0 [3.0M +64mm-0]
847022012	12' 0"+3'-0 [3.7M +76mm-0]
847022015	15' 0" +3 3/4"-0 [4.6M +95mm-0]
847022020	20' 0" +5'-0 [6.1M +127mm-0]
847022021	21' 0" +5 1/4"-0 [6.4M +133mm-0]
847022030	30' 0" +7 1/2"-0 [9.1M +191MM-0] (G)
847022050 (G)	50' 0" +12 1/2"-0 [15.2M +318MM-0]



- NOTES:
 1. MATERIAL: SEE TABLE
 2. FINISHES: SEE TABLE
 3. PRODUCT SPECIFICATION: PPS.84.006
 4. MATES WITH STANDARD & BAYONET STYLE RJ-45 JACK ASSEMBLIES
 5. CABLE IS UL RATED TYPE MPR/CMR
 6. COUPLING RING AND HOLDER MEET UL 746C/UV
 7. ASSEMBLY IS ROHS COMPLIANT.



WIRING DIAGRAM

P2		P1
1	WHITE-ORANGE	1
2	ORANGE	2
3	WHITE-GREEN	3
4	BLUE	4
5	WHITE-BLUE	5
6	GREEN	6
7	WHITE-BROWN	7
8	BROWN	8

RJ-45 PLUG (G) RJ-45 PLUG

ITEM	QTY	DESCRIPTION	MATERIAL	FINSH
8	1	RJ-45 PLUG OVERMOLD	PVC	BLACK
7	1	WEDGE	POLYESTER	BLACK
6	2	RJ-45 PLUG, SHIELDED	PER VENDOR SPEC.	GOLD PL. CONTACTS
5	1	GASKET SEAL	NITRILE	BLACK
4	1	RJ-45 COUPLING RING	POLYESTER	BLACK
3	1	RJ-45 HOLDER	POLYESTER	BLACK
2	1	OVERMOLD BODY	PVC	BLACK
1	SEE CHART	CABLE, UTP, 4P, 24 AWG, CAT 6	PVC JACKET	BLACK

ADD 50' P/N FCC NO: ETC2007-0383 DRAWN BY: DRW:NEHRDRAHL 2007/04/23 CHKD BY: STONE 2007/04/27 APPR: JMACNEILL 2007/04/30 DESCRIPTION: RJ-45 PLUG	QUALITY SYMBOLS	GENERAL TOLERANCES (UNLESS SPECIFIED)	DIMENSION STYLE	SCALE	DESIGN UNITS	THIRD ANGLE PROJECTION															
	$\nabla=0$ $\nabla=0$	<table border="1"> <tr> <th></th> <th>mm</th> <th>INCH</th> </tr> <tr> <td>4 PLACES</td> <td>± .10</td> <td>± .004</td> </tr> <tr> <td>3 PLACES</td> <td>± .15</td> <td>± .006</td> </tr> <tr> <td>2 PLACES</td> <td>± .20</td> <td>± .008</td> </tr> <tr> <td>1 PLACE</td> <td>± 0.25</td> <td>± .010</td> </tr> </table>		mm	INCH	4 PLACES	± .10	± .004	3 PLACES	± .15	± .006	2 PLACES	± .20	± .008	1 PLACE	± 0.25	± .010	IN/MM	1:1	INCH	
		mm	INCH																		
	4 PLACES	± .10	± .004																		
3 PLACES	± .15	± .006																			
2 PLACES	± .20	± .008																			
1 PLACE	± 0.25	± .010																			
DRAFT WHERE APPLICABLE MUST REMAIN WITHIN DIMENSIONS	SEE CHART	DRAWN BY: S. GILBERT CHECKED BY: P. WALTZ APPROVED BY: L. ROTHAUSS DATE: 2003/08/18 DATE: 2003/08/18 DATE: 2003/08/18	TITLE	CORD ASSEMBLY, RJ-45 MALE BAYONET TO MALE NO DRAIN WIRE																	
						MOLEX INCORPORATED DOCUMENT NO. SD-84702-002 SHEET NO. 1 OF 1															