

FEATURES AND SPECIFICATIONS

Features and Benefits

- Side-by-side stackability when using convection soldering technology
- Enclosed top
- 100% electrically tested
- .150mm (.006") max. "nail-to-tail" coplanarity

Reference Information

Product Specification: PS-43743-001
 Packaging: Tape and reel
 UL File No.: E107635
 CSA File No.: LR19980
 Designed In: Inches

Electrical

Voltage: 125V
 Current: 1.5A
 Contact Resistance: 10mΩ max.
 Dielectric Withstanding Voltage: 1000V AC
 Insulation Resistance: 500 MΩ min.

Mechanical

Durability: 500 cycles min.

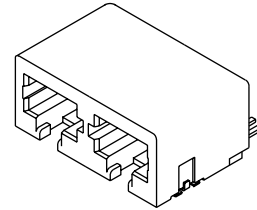
Physical

Housing: Black glass-filled, high temperature nylon, UL 94V-0
 Plating: Contact Area—1.27μm (50μ") min. Gold
 Solder Tails—1.27μm (50μ") Tin/Lead on both contact area and solder tails over Nickel overall
 Operating Temperature: -40 to +80°C

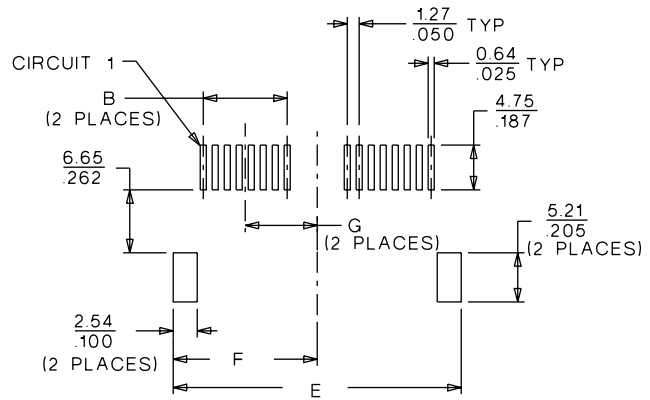
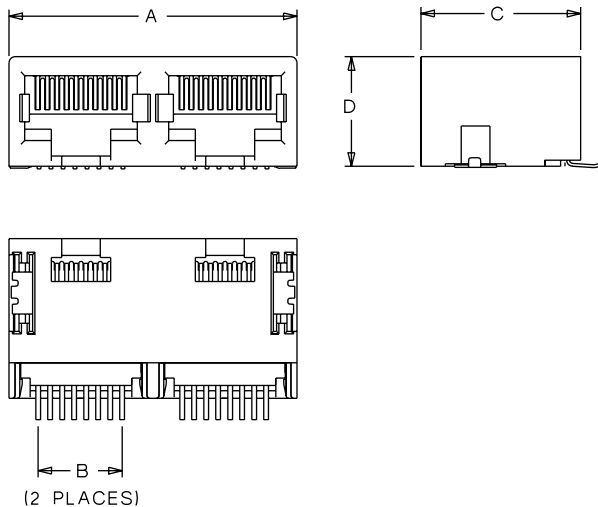
molex® Modular Jack

44193

**SMT, Right Angle
 Low Profile Dual Port with
 Flush Fitting Nails**



CATALOG DRAWING (FOR REFERENCE ONLY)



PCB LAYOUT: COMPONENT SIDE

ORDERING INFORMATION AND DIMENSIONS

Circuits	Loaded Contacts	Order No.	Dimension						
			A	B	C	D	E	F	G
6	2	44193-0018	26.42 (1.04)	1.27 (.050)	16.89 (.665)	11.80 (.465)	26.42 (1.04)	13.21 (.520)	6.60 (.260)
6	4	44193-0004	26.42 (1.00)	3.81 (.150)	16.89 (.665)	11.80 (.465)	26.42 (1.04)	13.21 (.520)	6.60 (.260)
6	6	44193-0005	26.42 (1.00)	6.35 (.250)	16.89 (.665)	11.80 (.465)	26.42 (1.04)	13.21 (.520)	6.60 (.260)
8	4	44193-0001	30.48 (1.20)	3.81 (.150)	16.89 (.665)	11.80 (.465)	30.48 (1.20)	15.24 (.600)	7.62 (.300)
8	6	44193-0002	30.48 (1.20)	6.35 (.250)	16.89 (.665)	11.80 (.465)	30.48 (1.20)	15.24 (.600)	7.62 (.300)
8	8	44193-0003	30.48 (1.20)	8.89 (.350)	16.89 (.665)	11.80 (.465)	30.48 (1.20)	15.24 (.600)	7.62 (.300)