

Switch Language

English

Need Assistance?

Contact Us
Find a Distributor
Order Samples
Tech Library

Printer-friendly page

Email this page

[Home](#) [Crimp Housings](#) [Datasheet](#)

Part Number: 0039012125

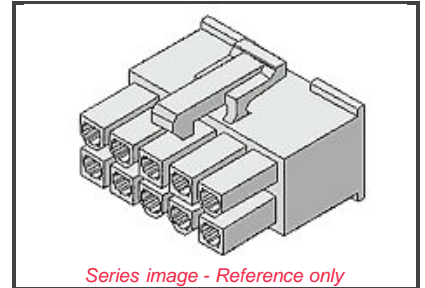
Status: Active **Overview:** [Mini-Fit Jr.™](#)

Description: 4.20mm (.165") Pitch Mini-Fit Jr.™ Receptacle Housing, Dual Row, UL 94V-0, 12 Circuits

Documents:

Note - Please disable browser pop-up blockers for documents on www.molex.com

- | | |
|---|---|
| Drawing (PDF) | Product Specification PS-5557-001 (PDF) |
| Product Specification PS-5557-003 (PDF) | Product Specification PS-5557-004 (PDF) |
| Product Specification PS-5557-010 (PDF) | Product Specification PS-5557-011 (PDF) |
| Product Specification PS-5557-012 (PDF) | Product Specification PS-5557-013 (PDF) |
| Product Specification PS-5557-015 (PDF) | Product Specification PS-5557-016 (PDF) |
| Product Specification PS-5557-021 (PDF) | Product Specification PS-5557-039 (PDF) |
| Product Specification PS-5557-040 (PDF) | Product Specification PS-5557-041 (PDF) |
| Product Specification PS-5557-042 (PDF) | Product Specification PS-5557-043 (PDF) |
| Product Specification PS-5557-044 (PDF) | 3D Model |
| Related Catalog Page (PDF) | Test Summary (PDF) |



EU RoHS **China RoHS**
ELV and RoHS Compliant



Need more information on product compliance?

Email productcompliance@molex.com

Please visit the [Contact Us](#) section for any non-product compliance questions.

Order Products:

[Check Distributor Inventory](#) [Add to My Parts](#)
[Request Samples](#)

Part Detail: ([show all](#))

[General](#) [Physical](#) [Electrical](#) [Material Info](#)

General

Product Family	Crimp Housings
Series	5557
Comments	Glow Wire Equivalent Part Number 50361674 Use with Strain Relief 41995 Series
Overview	Mini-Fit Jr.™
Product Name	Mini-Fit Jr.™

Physical

Breakaway	No
Circuits (maximum)	12
Color - Resin	Ivory
Flammability	94V-0
Flammability	94V-2
Gender	Female
Material - Resin	Nylon
Number of Rows	2
Packaging Type	Bag
Panel Mount	No

Search Parts in this Series

[5557](#) Series

Mates With

[5559d](#), [5566vw](#), [5566vwo](#), [5569rdf](#), [5569rdp](#), [43810a](#), [43810b](#), [43810c](#), [43810d](#), [44068a](#), [44068b](#), [44068c](#), [44068d](#), [44281](#), [44472dw](#), [44472dwo](#), [87427](#), [87427r](#), [87427rf](#), [42404](#), [44474](#), [42440](#), [43879](#), [42475](#)

Use With

[41995](#) Strain Relief

Pitch - Mating Interface (in)	0.165 In
Pitch - Mating Interface (mm)	4.20 mm
Pitch - Term. Interface (in)	0.165 In
Pitch - Term. Interface (mm)	4.20 mm
Polarized to Mating Part	Yes
Stackable	No
Temperature Range - Operating	-40°C to +105°C

Electrical

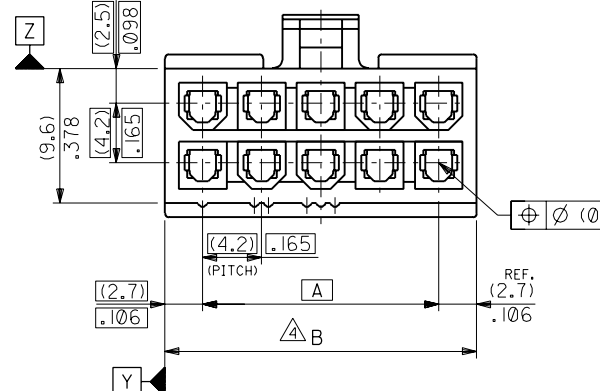
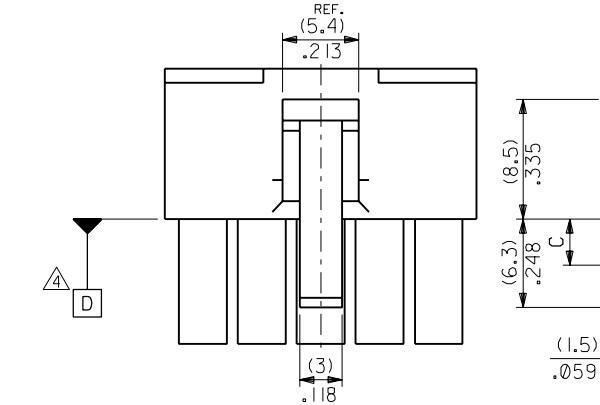
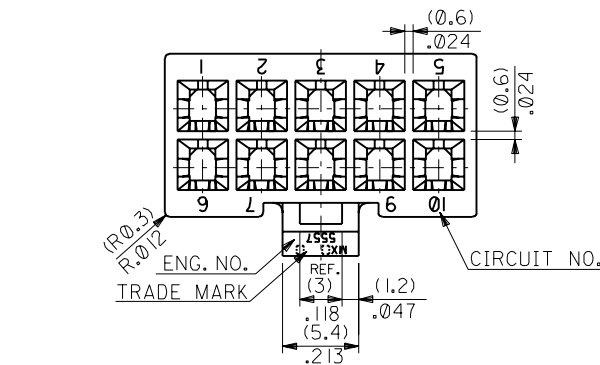
CSA	LR19980
Current - Maximum	9.000 Amp
TUV	R75142
UL	E29179

Material Info

Old Part Number	5557-12R-210
-----------------	--------------

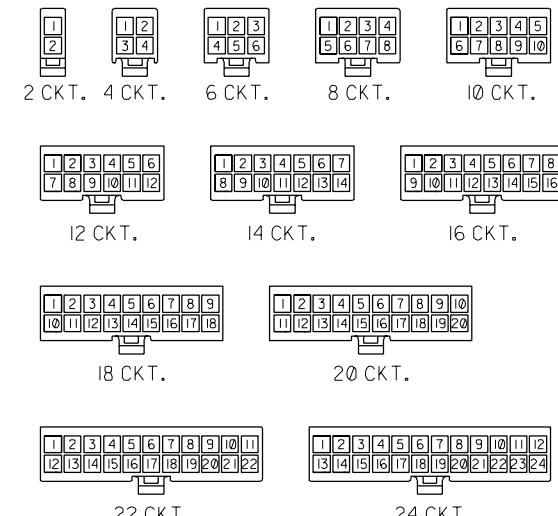
Reference - Drawing Numbers

Product Specification	PS-5557-001
Product Specification	PS-5557-003
Product Specification	PS-5557-004
Product Specification	PS-5557-010
Product Specification	PS-5557-011
Product Specification	PS-5557-012
Product Specification	PS-5557-013
Product Specification	PS-5557-015
Product Specification	PS-5557-016
Product Specification	PS-5557-021
Product Specification	PS-5557-039
Product Specification	PS-5557-040
Product Specification	PS-5557-041
Product Specification	PS-5557-042
Product Specification	PS-5557-043
Product Specification	PS-5557-044
Sales Drawing	SD-5557-NR-210



NOTES

1. TERMINAL : 5556 SERIES
2. MATE WITH : 5559 SERIES
5566 SERIES
5569 SERIES
3. (METRIC) VALUES SHOWN GOVERN OVER ENGLISH CONVERSION VALUES.
 ▲ TO BE MEASURED AT POSITION OF D SURFACE.



CIRCUIT SIZE LAYOUT
 (SCALE: 1-1)

(3,6)	(51.6) 2.031 (47.4) 1.866 (43.2) 1.701 (39) 1.535	(46.2) 1.819 (42) 1.654 (37.8) 1.488 (33.6) 1.323	39-01-2245 -2225 -2205 -2185	5557-24R-210 -22R-210 -20R-210 -18R-210	24 22 20 18
(3,3)	(34.8) 1.37 (30.6) 1.205 (26.4) 1.039 (22.2) .874 (18) .709 (13.8) .543 (9.6) .378 (5.4) .213	(29.4) 1.158 (25.2) .992 (21) .827 (16.8) .661 (12.6) .496 (8.4) .331 (4.2) .165	-2165 -2145 -2125 -2105 -2085 -2065 -2045	-16R-210 -14R-210 -12R-210 -10R-210 -08R-210 -06R-210 -04R-210	16 14 12 10 8 6 4
			39-01-2025	5557-02R-210	2
C	B	A	EDP. NO.	ENG. NO.	NO. OF CKTS.

角度 ANGLE	±3°	F	REVISED (JC70586)	S.A	9/11/8
30以上 OVER	+0.4	E	REVISED (J20158)	M.F	9/24/20
10以上 30未滿 UNDER	+0.3	D	REVISED (J01160)	H.H	9/01/18
10未滿 UNDER	+0.2	C	REVISED & REDRAWN (J00192)	S.M	9/02/22
一般公差 GENERAL TOLERANCES		記号 LTR	変更内容 REVISION RECORD	DR. CHK.	日付 DATE

材料 MATERIAL: 66NYLON (UL94V-0)
 仕上げ FINISH: — — — —
 適用電線範囲 WIRE RANGE: — — — —
 被覆外径 INS. RANGE: — — — —
 DRAWN BY: 90/2/22 S. MOCHIZUKI
 CHK'D BY: 97/01/08 M. FUKUSHIMA
 APP'D BY: 97/01/08 M. FUKUSHIMA
 尺度 SCALE: 3-1

molex MOLEX-JAPAN CO.,LTD.
 日本モレックス株式会社

EDP. NO. 39-01-2**5
 ENG. NO. SD-5557-NR-210
 TITLE 名称: NEW MINI FIT CONN. REC. HOUSING

REV F