

Switch Language

English

Need Assistance?

Contact Us  
Find a Distributor  
Order Samples  
Tech Library

Printer-friendly page

Email this page

[Home](#) [Crimp Housings](#) [Datasheet](#)

**Part Number:** 0039012120

**Status:** Active **Overview:** [Mini-Fit Jr.™](#)

**Description:** 4.20mm (.165") Pitch Mini-Fit Jr.™ Receptacle Housing, Dual Row, UL 94V-2, 12 Circuits

**Documents:**

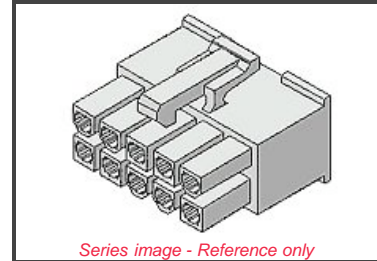
*Note - Please disable browser pop-up blockers for documents on www.molex.com*

[Drawing \(PDF\)](#)

[3D Model](#)

[Test Summary \(PDF\)](#)

[Related Catalog Page \(PDF\)](#)



Series image - Reference only

**Order Products:**

[Check Distributor Inventory](#)

[Add to My Parts](#)

[Request Samples](#)

**Part Detail:** [\(show all\)](#)

[General](#) [Physical](#) [Electrical](#) [Material Info](#)

**General**

Product Family	Crimp Housings
Series	<a href="#">5557</a>
Comments	Use with Strain Relief 41995 series
Overview	<a href="#">Mini-Fit Jr.™</a>
Product Name	Mini-Fit Jr.™

**Physical**

Breakaway	No
Circuits (maximum)	12
Color - Resin	Natural
Flammability	94V-2
Gender	Female
Material - Resin	Nylon
Number of Rows	2
Packaging Type	Bag
Panel Mount	No
Pitch - Mating Interface (in)	0.165 In
Pitch - Mating Interface (mm)	4.20 mm
Pitch - Term. Interface (in)	0.165 In
Pitch - Term. Interface (mm)	4.20 mm
Polarized to Mating Part	Yes
Stackable	No
Temperature Range - Operating	-40°C to +105°C

**Electrical**

CSA	LR19980
TUV	R75142
UL	E29179

**Material Info**

Old Part Number	5557-12R
-----------------	----------

**EU RoHS**

**ELV and RoHS Compliant**



**China RoHS**

**Need more information on product compliance?**

Email [productcompliance@molex.com](mailto:productcompliance@molex.com)

Please visit the [Contact Us](#) section for any non-product compliance questions.

**Search Parts in this Series**

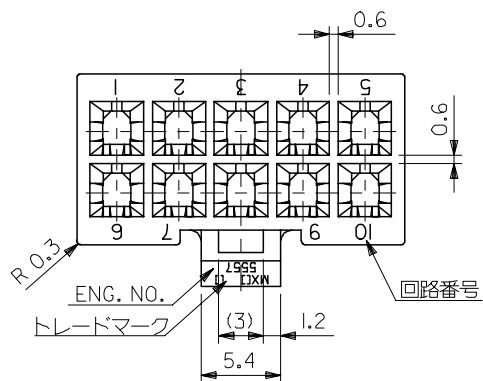
[5557 Series](#)

**Mates With**

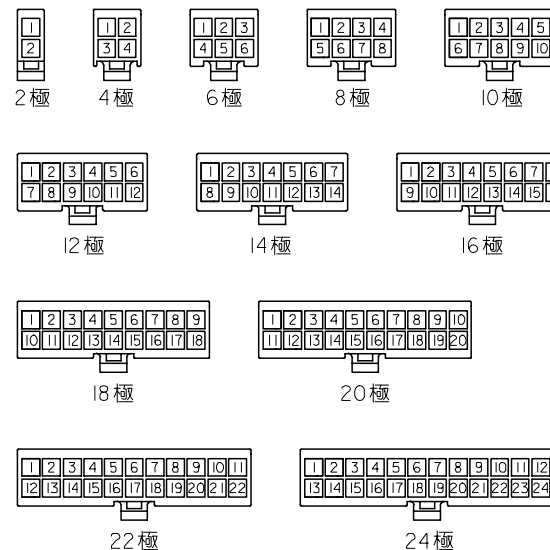
[5559d](#), [5566vw](#), [5566vwo](#), [5569rdf](#), [5569rdp](#), [43810a](#), [43810b](#), [43810c](#), [43810d](#), [44068a](#), [44068b](#), [44068c](#), [44068d](#), [44281](#), [44472dw](#), [44472dwo](#), [87427](#), [87427r](#), [87427rf](#), [42404](#), [44474](#), [42440](#), [43879](#), [42475](#)

**Use With**

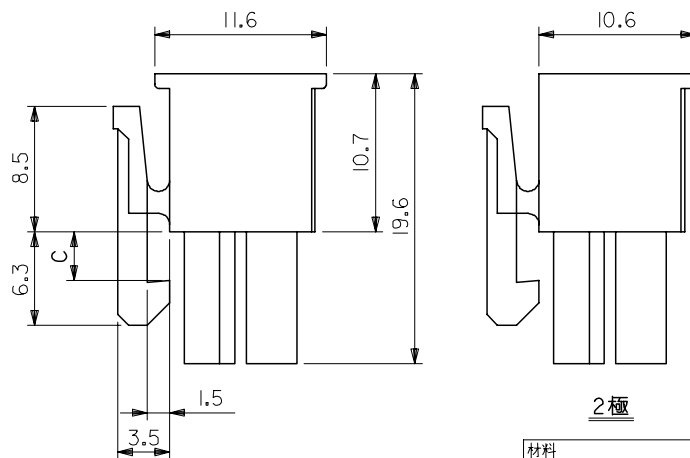
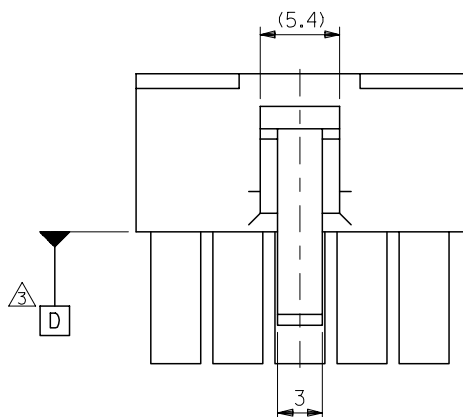
[41995 Strain Relief](#)



**注記**  
 1. 適用ターミナル：5556 シリーズ  
 2. 嵌合相手：5559 シリーズ  
 5566 シリーズ  
 5569 シリーズ  
 501566 シリーズ  
 △ D 面の位置にて維持すること。

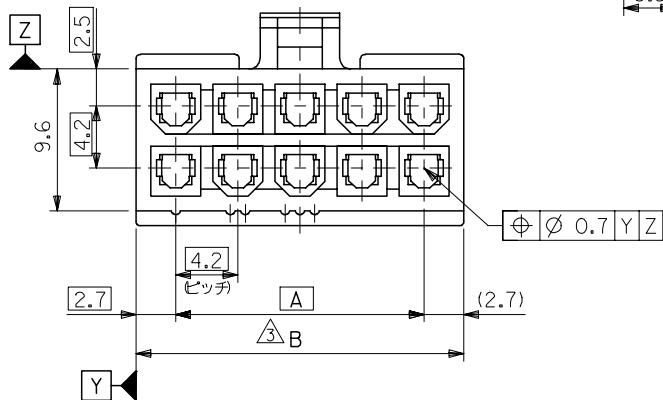


回路レイアウト図  
(SCALE 1:1)



材料 MATERIAL	66ナイロン (UL94V-2)	
仕上げ FINISH	—	
適用電線範囲 WIRE RANGE	—	
被覆外径 INS. RANGE	—	

C	B	A	EDP. NO.	ENG. NO.	極数
3.6	51.6	46.2	39-01-2240	5557-24R	24
	47.4	42	↑ -2220	↑ -22R	22
	43.2	37.8	-2200	-20R	20
3.3	39	33.6	-2180	-18R	18
	34.8	29.4	-2160	-16R	16
	30.6	25.2	-2140	-14R	14
	26.4	21	-2120	-12R	12
	22.2	16.8	-2100	-10R	10
	18	12.6	-2080	-08R	8
	13.8	8.4	-2060	-06R	6
	9.6	4.2	↓ -2040	↓ -04R	4
	5.4	—	39-01-2020	5557-02R	2

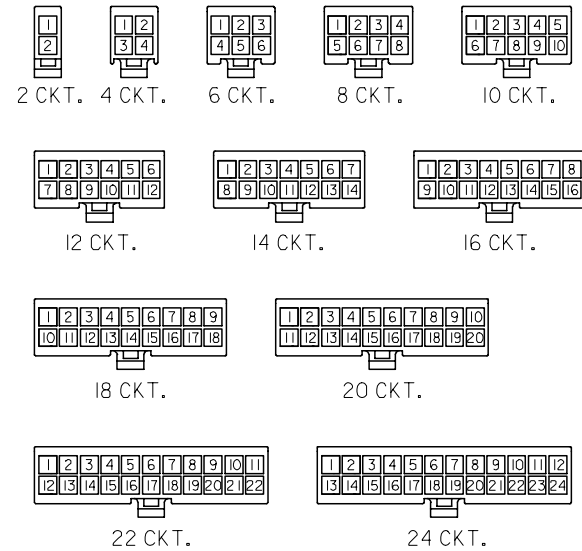


REVISED EC NO: J2005-3799 DRWN: NABE CHKD: TOYODA APPR: NUKITA	DESCRIPTION	GENERAL TOLERANCES (UNLESS SPECIFIED)	DIMENSION STYLE MM ONLY	SCALE ---	DESIGN UNITS METRIC	THIRD ANGLE PROJECTION
	REV	10 UNDER ±0.2	DRAWN BY DATE S. MOCHIZUKI '90/02/22	TITLE NEW MINI FIT CONN REC. HOUSING	MOLEX INCORPORATED	
	J	10 OVER 30 UNDER ±0.3	CHECKED BY DATE M. FUKUSHIMA '97/01/08	APPROVED BY DATE M. FUKUSHIMA '97/01/08		
		30 OVER ±0.4	ANGULAR ±3 °	MATERIAL NO. SEE CHART	DOCUMENT NO. SD-5557-003	SHEET NO. 1 OF 2
		DRAFT WHERE APPLICABLE MUST REMAIN WITHIN DIMENSIONS	SIZE A3	THIS DRAWING CONTAINS INFORMATION THAT IS PROPRIETARY TO MOLEX INCORPORATED AND SHOULD NOT BE USED WITHOUT WRITTEN PERMISSION		

10 9 8 7 6 5 4 3 2 1

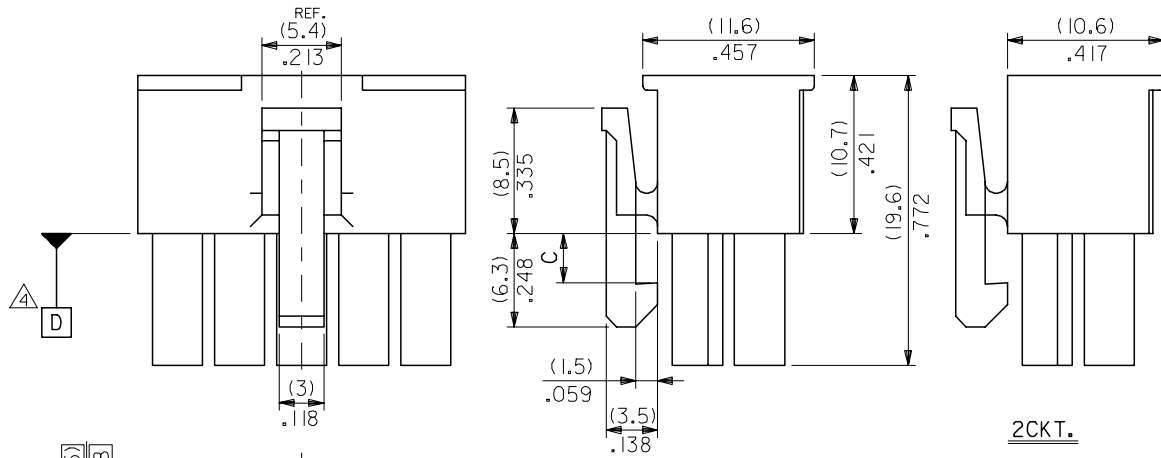
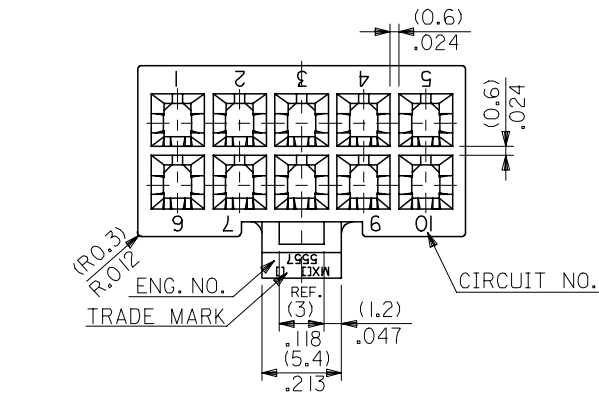
**NOTES**

1. TERMINAL : 5556 SERIES
2. MATE WITH : 5559 SERIES  
5566 SERIES  
5569 SERIES  
501566 SERIES
3. (METRIC) VALUES SHOWN GOVERN OVER ENGLISH CONVERSION VALUES.  
A TO BE MEASURED AT POSITION OF D SURFACE.



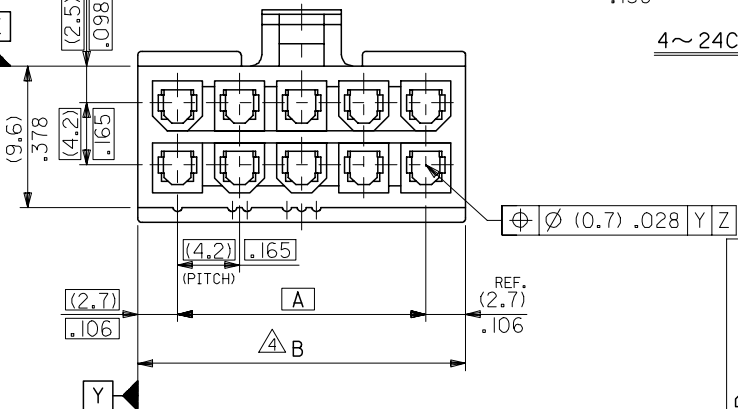
**CIRCUIT SIZE LAYOUT**  
(SCALE 1:1)

(3.6) .142	(51.6)	2.031	(46.2)	1.819	39-01-2240	5557-24R	24
	(47.4)	1.866	(42)	1.654	↑ -2220	↑ -22R	22
(3.3) .129	(43.2)	1.701	(37.8)	1.488	↑ -2200	↑ -20R	20
	(39)	1.535	(33.6)	1.323	↑ -2180	↑ -18R	18
	(34.8)	1.37	(29.4)	1.158	↑ -2160	↑ -16R	16
	(30.6)	1.205	(25.2)	.992	↑ -2140	↑ -14R	14
	(26.4)	1.039	(21)	.827	↑ -2120	↑ -12R	12
	(22.2)	.874	(16.8)	.661	↑ -2100	↑ -10R	10
	(18)	.709	(12.6)	.496	↑ -2080	↑ -08R	8
	(13.8)	.543	(8.4)	.331	↑ -2060	↑ -06R	6
	(9.6)	.378	(4.2)	.165	↓ -2040	↓ -04R	4
	(5.4)	.213	—	—	39-01-2020	5557-02R	2
C	B	A	EDP. NO.	ENG. NO.	NO. OF CKTS.		



4~24CKT.

材料 MATERIAL	66NYLON (UL94V-2)
仕上り FINISH	—
適用電線範囲 WIRE RANGE	—
被覆外径 NS. RANGE	—



REVISED EC NO: J2005-3799 DRW: NABEI CHK: KATOYODA APP: NUKITA	2005/06/20	2005/06/21	2005/06/27	DESCRIPTION	GENERAL TOLERANCES (UNLESS SPECIFIED)	DIMENSION STYLE MM ONLY	SCALE 3:1	DESIGN UNITS METRIC	THIRD ANGLE PROJECTION
	10 UNDER	±0.2	DRAWN BY S. MOCHIZUKI		DATE '90/02/22	TITLE NEW MINI FIT CONN REC. HOUSING			
	10 OVER 30 UNDER	±0.3	CHECKED BY M. FUKUSHIMA		DATE '97/01/08	MATERIAL NO. SEE CHART			
	30 OVER	±0.4	APPROVED BY M. FUKUSHIMA		DATE '97/01/08	DOCUMENT NO. SD-5557-003			
	ANGULAR	±3 °	MOLEX INCORPORATED						
DRAFT WHERE APPLICABLE MUST REMAIN WITHIN DIMENSIONS					SIZE A3	SHEET NO. 2 OF 2			