

Switch Language

English

Need Assistance?

Contact Us  
Find a Distributor  
Order Samples  
Tech Library

Printer-friendly page

Email this page

[Home](#)   [Crimp Housings](#)   [Datasheet](#)

**Part Number: 0039012100**

**Status: Active**    **Overview: Mini-Fit Jr.™**

**Description:** 4.20mm (.165") Pitch Mini-Fit Jr.™ Receptacle Housing, Dual Row, UL 94V-2, 10 Circuits

**Documents:**

*Note - Please disable browser pop-up blockers for documents on www.molex.com*

- [Drawing \(PDF\)](#)    [Product Specification PS-5557-001 \(PDF\)](#)
- [Product Specification PS-5557-003 \(PDF\)](#)    [Product Specification PS-5557-004 \(PDF\)](#)
- [Product Specification PS-5557-010 \(PDF\)](#)    [Product Specification PS-5557-011 \(PDF\)](#)
- [Product Specification PS-5557-012 \(PDF\)](#)    [Product Specification PS-5557-013 \(PDF\)](#)
- [Product Specification PS-5557-015 \(PDF\)](#)    [Product Specification PS-5557-016 \(PDF\)](#)
- [Product Specification PS-5557-021 \(PDF\)](#)    [Product Specification PS-5557-039 \(PDF\)](#)
- [Product Specification PS-5557-040 \(PDF\)](#)    [Product Specification PS-5557-041 \(PDF\)](#)
- [Product Specification PS-5557-042 \(PDF\)](#)    [Product Specification PS-5557-043 \(PDF\)](#)
- [Product Specification PS-5557-044 \(PDF\)](#)    [3D Model](#)
- [Related Catalog Page \(PDF\)](#)    [Test Summary \(PDF\)](#)

**Order Products:**

[Check Distributor Inventory](#)    [Add to My Parts](#)  
[Request Samples](#)

**Part Detail:** [\(show all\)](#)

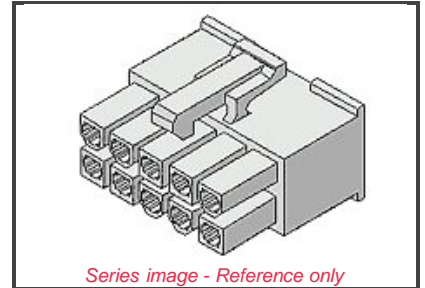
[General](#)   [Physical](#)   [Electrical](#)   [Material Info](#)

**General**

Product Family    Crimp Housings  
Series    5557  
Comments    Glow Wire Equivalent Part Number [50361671](#)  
Overview    [Mini-Fit Jr.™](#)  
Product Name    Mini-Fit Jr.™

**Physical**

Breakaway    No  
Circuits (maximum)    10  
Color - Resin    Natural  
Flammability    94V-2  
Gender    Female  
Material - Resin    Nylon  
Number of Rows    2  
Packaging Type    Bag  
Panel Mount    No  
Pitch - Mating Interface (in)    0.165 In  
Pitch - Mating Interface (mm)    4.20 mm  
Pitch - Term. Interface (in)    0.165 In



**EU RoHS**    **China RoHS**  
**ELV and RoHS Compliant**



**Need more information on product compliance?**

Email [productcompliance@molex.com](mailto:productcompliance@molex.com)

Please visit the [Contact Us](#) section for any non-product compliance questions.

**Search Parts in this Series**

[5557](#) Series

**Mates With**

[5559d](#), [5566vw](#), [5566vwo](#), [5569rdf](#),  
[5569rdp](#), [43810a](#), [43810b](#), [43810c](#),  
[43810d](#), [44068a](#), [44068b](#), [44068c](#),  
[44068d](#), [44281](#), [44472dw](#), [44472dwo](#),  
[87427](#), [87427r](#), [87427rf](#), [42404](#),  
[44474](#), [42440](#), [43879](#), [42475](#)

**Use With**

[5556](#), [44476](#), [44485](#), [41995](#)

|                               |                 |
|-------------------------------|-----------------|
| Pitch - Term. Interface (mm)  | 4.20 mm         |
| Polarized to Mating Part      | Yes             |
| Stackable                     | No              |
| Temperature Range - Operating | -40°C to +105°C |

**Electrical**

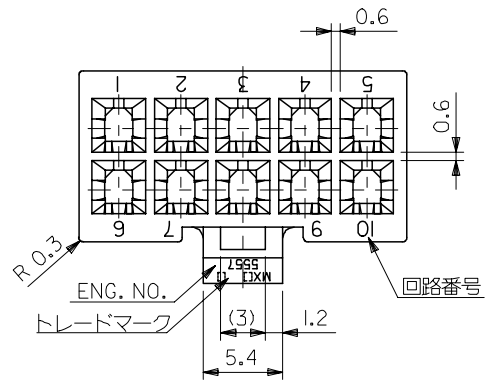
|     |         |
|-----|---------|
| CSA | LR19980 |
| TUV | R75142  |
| UL  | E29179  |

**Material Info**

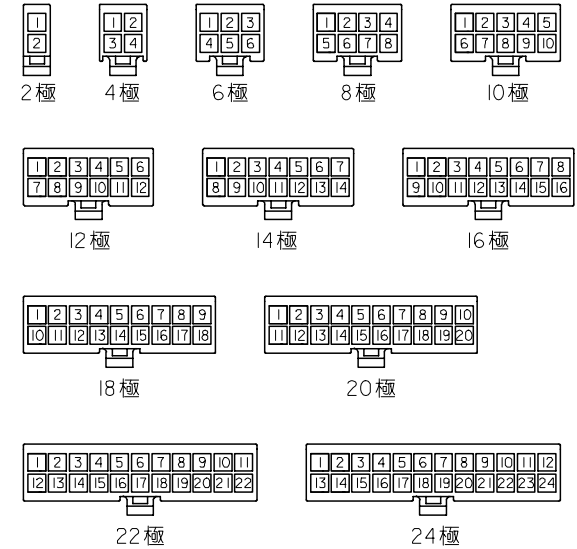
|                 |          |
|-----------------|----------|
| Old Part Number | 5557-10R |
|-----------------|----------|

**Reference - Drawing Numbers**

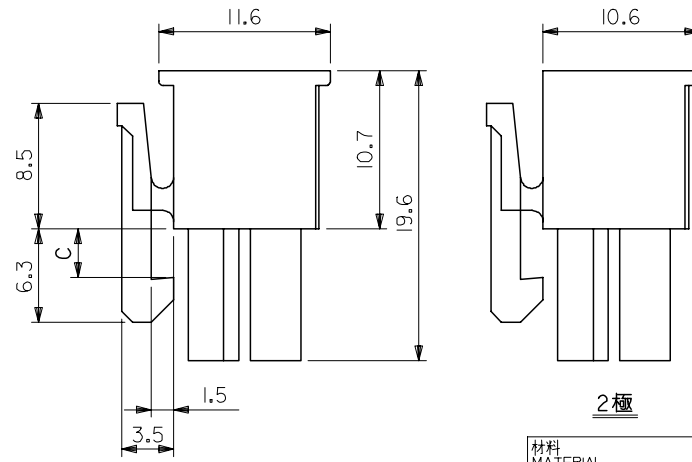
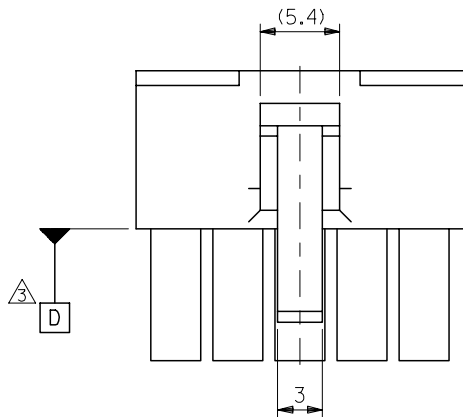
|                       |             |
|-----------------------|-------------|
| Product Specification | PS-5557-001 |
| Product Specification | PS-5557-003 |
| Product Specification | PS-5557-004 |
| Product Specification | PS-5557-010 |
| Product Specification | PS-5557-011 |
| Product Specification | PS-5557-012 |
| Product Specification | PS-5557-013 |
| Product Specification | PS-5557-015 |
| Product Specification | PS-5557-016 |
| Product Specification | PS-5557-021 |
| Product Specification | PS-5557-039 |
| Product Specification | PS-5557-040 |
| Product Specification | PS-5557-041 |
| Product Specification | PS-5557-042 |
| Product Specification | PS-5557-043 |
| Product Specification | PS-5557-044 |
| Sales Drawing         | SD-5557-003 |



**注記**  
 1. 適用ターミナル：5556 シリーズ  
 2. 嵌合相手：5559 シリーズ  
 5566 シリーズ  
 5569 シリーズ  
 501566 シリーズ  
 △ D 面の位置にて維持すること。

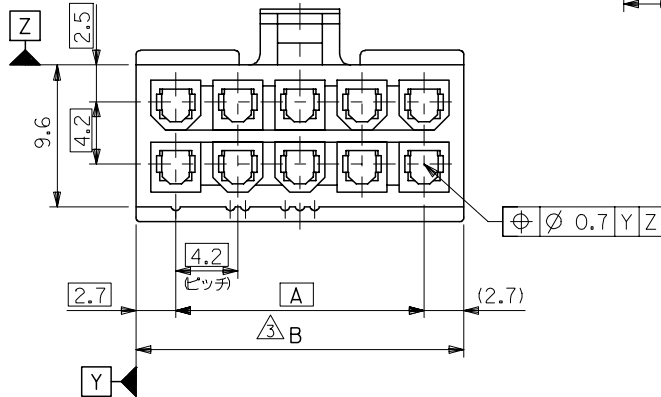


回路レイアウト図  
(SCALE 1:1)



|                      |                  |  |
|----------------------|------------------|--|
| 材料<br>MATERIAL       | 66ナイロン (UL94V-2) |  |
| 仕上げ<br>FINISH        | —                |  |
| 適用電線範囲<br>WIRE RANGE | —                |  |
| 被覆外径<br>INS. RANGE   | —                |  |

| C   | B    | A    | EDP. NO.   | ENG. NO. | 極数 |
|-----|------|------|------------|----------|----|
| 3.6 | 51.6 | 46.2 | 39-01-2240 | 5557-24R | 24 |
|     | 47.4 | 42   | -2220      | -22R     | 22 |
|     | 43.2 | 37.8 | -2200      | -20R     | 20 |
| 3.3 | 39   | 33.6 | -2180      | -18R     | 18 |
|     | 34.8 | 29.4 | -2160      | -16R     | 16 |
|     | 30.6 | 25.2 | -2140      | -14R     | 14 |
|     | 26.4 | 21   | -2120      | -12R     | 12 |
|     | 22.2 | 16.8 | -2100      | -10R     | 10 |
|     | 18   | 12.6 | -2080      | -08R     | 8  |
|     | 13.8 | 8.4  | -2060      | -06R     | 6  |
|     | 9.6  | 4.2  | -2040      | -04R     | 4  |
|     | 5.4  | —    | 39-01-2020 | 5557-02R | 2  |

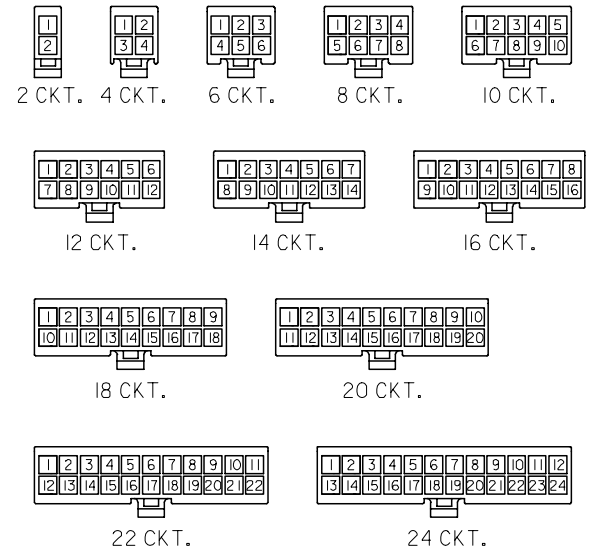


|  |             |  |   |  |                             |                        |
|--|-------------|--|---|--|-----------------------------|------------------------|
| REVISED<br>EC NO: J2005-3799<br>DRWN: NABE<br>CHKD: TOYODA<br>APPR: NUKITA | DESCRIPTION | GENERAL TOLERANCES (UNLESS SPECIFIED)                      | DIMENSION STYLE<br>MM ONLY                | SCALE<br>---   | DESIGN UNITS<br>METRIC      | THIRD ANGLE PROJECTION |
|  | REV         | 10 UNDER ±0.2  | DRAWN BY DATE<br>S. MOCHIZUKI '90/02/22   | TITLE<br>NEW MINI FIT CONN<br>REC. HOUSING   | MOLEX INCORPORATED          |                        |
|  | J           | 10 OVER 30 UNDER ±0.3                                      | CHECKED BY DATE<br>M. FUKUSHIMA '97/01/08 | APPROVED BY DATE<br>M. FUKUSHIMA '97/01/08   |                             |                        |
|  |             | 30 OVER ±0.4   | ANGULAR ±3 °                              | MATERIAL NO.<br>SEE CHART  | DOCUMENT NO.<br>SD-5557-003 | SHEET NO.<br>1 OF 2    |
|  |             | DRAFT WHERE APPLICABLE<br>MUST REMAIN<br>WITHIN DIMENSIONS | SIZE<br>A3                                | THIS DRAWING CONTAINS INFORMATION THAT IS PROPRIETARY TO MOLEX<br>INCORPORATED AND SHOULD NOT BE USED WITHOUT WRITTEN PERMISSION |                             |                        |

10 9 8 7 6 5 4 3 2 1

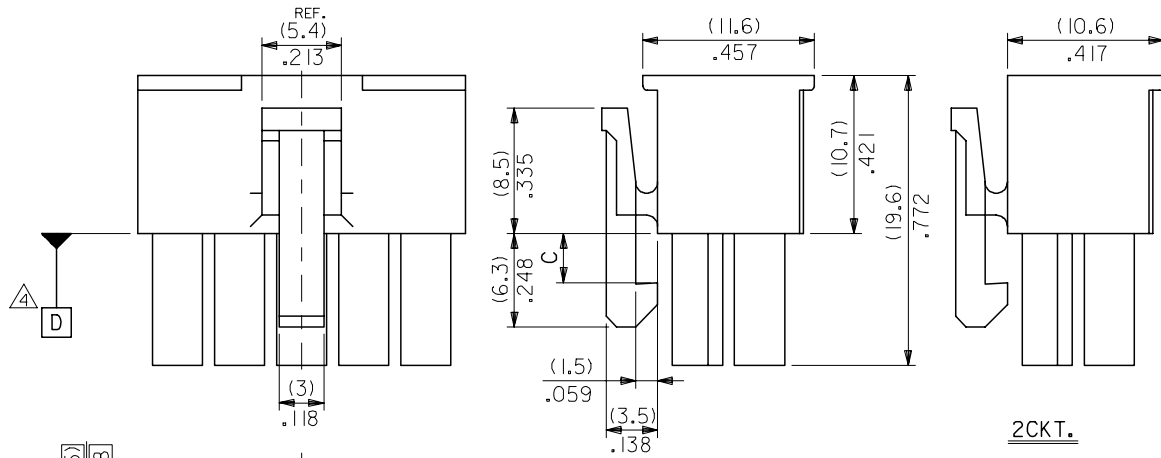
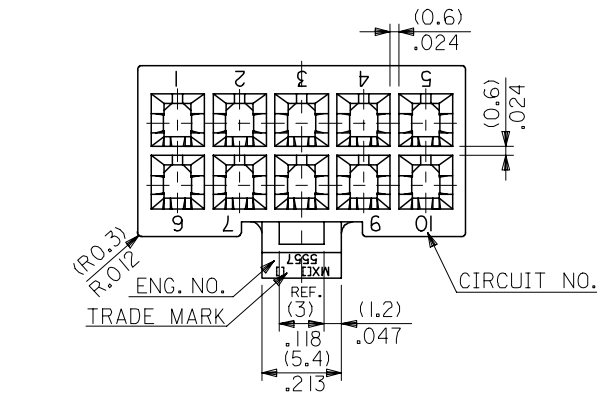
**NOTES**

1. TERMINAL : 5556 SERIES
2. MATE WITH : 5559 SERIES  
5566 SERIES  
5569 SERIES  
501566 SERIES
3. (METRIC) VALUES SHOWN GOVERN OVER ENGLISH CONVERSION VALUES.  
A TO BE MEASURED AT POSITION OF D SURFACE.



**CIRCUIT SIZE LAYOUT**  
(SCALE 1:1)

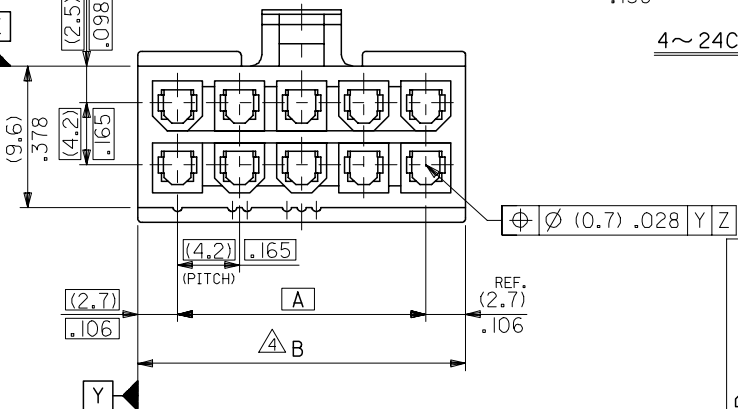
|               |              |              |            |          |              |
|---------------|--------------|--------------|------------|----------|--------------|
| (3.6)<br>.142 | (51.6) 2.031 | (46.2) 1.819 | 39-01-2240 | 5557-24R | 24           |
|               | (47.4) 1.866 | (42) 1.654   | ↑ -2220    | ↑ -22R   | 22           |
| (3.3)<br>.129 | (43.2) 1.701 | (37.8) 1.488 | -2200      | -20R     | 20           |
|               | (39) 1.535   | (33.6) 1.323 | -2180      | -18R     | 18           |
|               | (34.8) 1.37  | (29.4) 1.158 | -2160      | -16R     | 16           |
|               | (30.6) 1.205 | (25.2) .992  | -2140      | -14R     | 14           |
|               | (26.4) 1.039 | (21) .827    | -2120      | -12R     | 12           |
|               | (22.2) .874  | (16.8) .661  | -2100      | -10R     | 10           |
|               | (18) .709    | (12.6) .496  | -2080      | -08R     | 8            |
|               | (13.8) .543  | (8.4) .331   | -2060      | -06R     | 6            |
|               | (9.6) .378   | (4.2) .165   | ↓ -2040    | ↓ -04R   | 4            |
|               | (5.4) .213   | —            | 39-01-2020 | 5557-02R | 2            |
| C             | B            | A            | EDP. NO.   | ENG. NO. | NO. OF CKTS. |



**2CKT.**

**4~24CKT.**

|                      |                   |
|----------------------|-------------------|
| 材料<br>MATERIAL       | 66NYLON (UL94V-2) |
| 仕上り<br>FINISH        | —                 |
| 適用電線範囲<br>WIRE RANGE | —                 |
| 被覆外径<br>NS. RANGE    | —                 |



|  |                  |            |                             |             |                                       |  |              |                        |                        |
|--|------------------|------------|-----------------------------|-------------|---------------------------------------|--|--------------|------------------------|------------------------|
| REVISED<br>EC NO: J2005-3799<br>DRW: NABEI<br>CHK: KATOYODA<br>APP: NUKITA | 2005/06/20       | 2005/06/21 | 2005/06/27                  | DESCRIPTION | GENERAL TOLERANCES (UNLESS SPECIFIED) | DIMENSION STYLE<br>MM ONLY                 | SCALE<br>3:1 | DESIGN UNITS<br>METRIC | THIRD ANGLE PROJECTION |
|  | 10 UNDER         | ±0.2       | DRAWN BY<br>S. MOCHIZUKI    |             | DATE<br>'90/02/22                     | TITLE<br>NEW MINI FIT CONN<br>REC. HOUSING |              |                        |                        |
|  | 10 OVER 30 UNDER | ±0.3       | CHECKED BY<br>M. FUKUSHIMA  |             | DATE<br>'97/01/08                     | MATERIAL NO.<br>SEE CHART                  |              |                        |                        |
|  | 30 OVER          | ±0.4       | APPROVED BY<br>M. FUKUSHIMA |             | DATE<br>'97/01/08                     | DOCUMENT NO.<br>SD-5557-003                |              |                        |                        |
|  | ANGULAR          | ±3 °       | MOLEX INCORPORATED          |             |                                       |  |              |                        |                        |
| DRAFT WHERE APPLICABLE<br>MUST REMAIN<br>WITHIN DIMENSIONS                 |                  |            |                             |             | SIZE<br>A3                            | SHEET NO.<br>2 OF 2                        |              |                        |                        |