

Switch Language

English

Need Assistance?

[Contact Us](#)  
[Find a Distributor](#)  
[Order Samples](#)  
[Tech Library](#)

[Printer-friendly page](#)

[Email this page](#)

[Home](#)   [Crimp Housings](#)   [Datasheet](#)

**Part Number:** 0039012081

**Status:** Active   **Overview:** [Mini-Fit Jr.™](#)

**Description:** 4.20mm (.165") Pitch Mini-Fit Jr.™ Plug Housing, Dual Row, with and without Panel Mount Ears, UL 94V-2, Panel Mount, 8 Circuits

**Documents:**

*Note - Please disable browser pop-up blockers for documents on [www.molex.com](http://www.molex.com)*

- |   |   |
|---|---|
| <a href="#">Drawing (PDF)</a>                           | <a href="#">Product Specification PS-5557-003 (PDF)</a> |
| <a href="#">Product Specification PS-5557-012 (PDF)</a> | <a href="#">Product Specification PS-5557-013 (PDF)</a> |
| <a href="#">Product Specification PS-5557-016 (PDF)</a> | <a href="#">Product Specification PS-5557-042 (PDF)</a> |
| <a href="#">3D Model</a>                                | <a href="#">Related Catalog Page (PDF)</a>              |

**Order Products:**

[Check Distributor Inventory](#)   [Add to My Parts](#)  
[Request Samples](#)

**Part Detail:** ([show all](#))

[General](#)   [Physical](#)   [Electrical](#)   [Material Info](#)

**General**

Product Family	Crimp Housings
Series	<a href="#">5559</a>
Comments	Not for use with Strain Relief
Overview	<a href="#">Mini-Fit Jr.™</a>
Product Name	Mini-Fit Jr.™

**Physical**

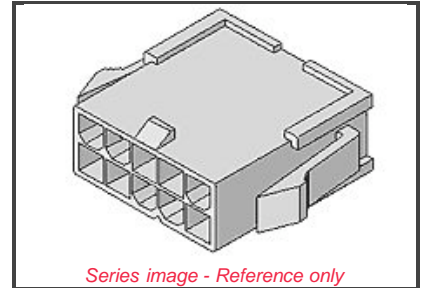
Breakaway	No
Circuits (maximum)	8
Color - Resin	Natural
Flammability	94V-2
Gender	Male
Material - Resin	Nylon
Number of Rows	2
Packaging Type	Bag
Panel Mount	Yes
Pitch - Mating Interface (in)	0.165 In
Pitch - Mating Interface (mm)	4.20 mm
Pitch - Term. Interface (in)	0.165 In
Pitch - Term. Interface (mm)	4.20 mm
Polarized to Mating Part	Yes
Stackable	No
Temperature Range - Operating	-40°C to +105°C

**Electrical**

CSA	LR19980
TUV	R75142
UL	E29179

**Material Info**

Old Part Number	5559-08P
-----------------	----------



**EU RoHS**   **China RoHS**  
**ELV and RoHS Compliant**



**Need more information on product compliance?**

Email [productcompliance@molex.com](mailto:productcompliance@molex.com)

Please visit the [Contact Us](#) section for any non-product compliance questions.

**Search Parts in this Series**

[5559](#) Series

**Mates With**

[5557d](#) Receptacle Housing

**Use With**

[5558](#), [44478](#), [30490](#), [41995](#)

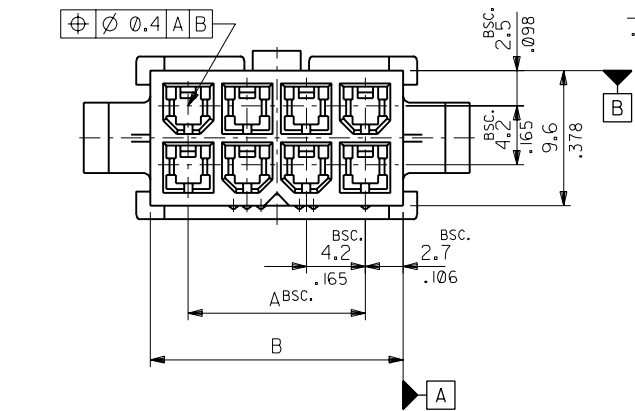
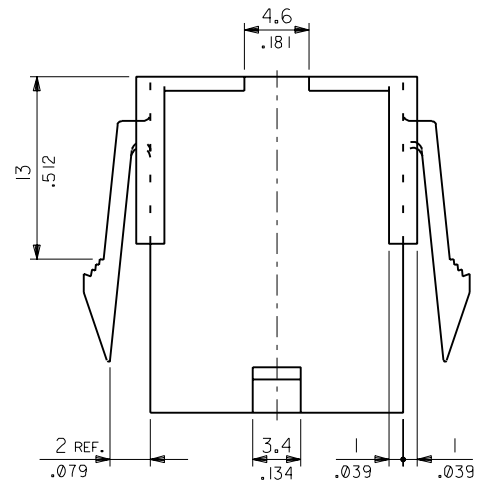
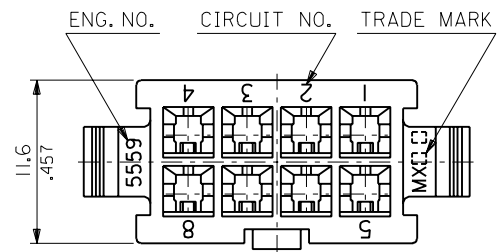
**Reference - Drawing Numbers**

Product Specification	PS-5557-003
Product Specification	PS-5557-012
Product Specification	PS-5557-013
Product Specification	PS-5557-016
Product Specification	PS-5557-042
Sales Drawing	SD-5559-NP

:MM DIMENSIONS IN METRIC DO NOT SCALE DRAWING

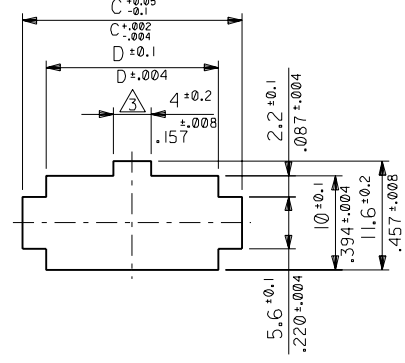
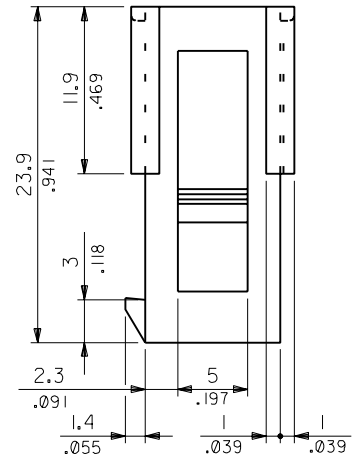
ENG. NO. 39-01-2\*\*1

SD-5559-NP

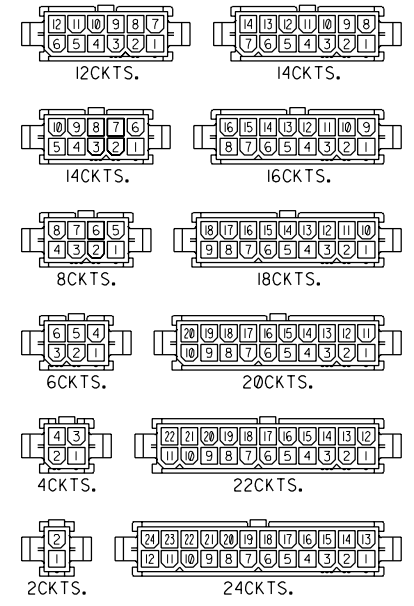


**NOTES**

1. TERMINAL : 5558 SERIES
2. MATES WITH : 5557-NR
- △ THIS DIMENSION IS ALLOWABLE UP TO "D" DIMENSION IN CASE OF 2 CIRCUITS.
4. PANEL HOLE TO BE PUNCHED OUT IN THE SAME DIRECTION AS INSERTION INTO THE PANEL.



RECOMMENDED PANEL HOLE DIMENSION  
(THICKNESS : 0.8-2.0/.032-.079)



CIRCUIT SIZE LAYOUT (SCALE : 1-1)

52.1/2.051	57.0/2.244	51.6/2.031	46.2/1.819	39-01-2241	5559-24P	24
47.9/1.886	52.8/2.079	47.4/1.866	42.0/1.654	▲ -2221	▲ -22P	22
43.7/1.720	48.6/1.913	43.2/1.701	37.8/1.488	-2201	-20P	20
39.5/1.555	44.4/1.748	39.0/1.535	33.6/1.323	-2181	-18P	18
35.3/1.390	40.2/1.583	34.8/1.370	29.4/1.158	-2161	-16P	16
31.1/1.224	36.0/1.417	30.6/1.205	25.2/0.992	-2141	-14P	14
26.8/1.055	31.8/1.252	26.4/1.039	21.0/0.827	-2121	-12P	12
22.6/0.890	27.6/1.087	22.2/0.874	16.8/0.661	-2101	-10P	10
18.4/0.724	23.4/0.921	18.0/0.709	12.6/0.496	-2081	-08P	8
14.2/0.559	19.2/0.756	13.8/0.543	8.4/0.331	-2061	-06P	6
10.0/0.394	15.0/0.591	9.6/0.378	4.2/0.165	▼ -2041	▼ -04P	4
5.8/0.228	10.8/0.425	5.4/0.213	—	—	—	2
				39-01-2021	5559-02P	2
	D	C	B	A	EDP NO.	ENG. NO.
						CIRCUIT

角 度 ANGLE		±3°			材料 MATERIAL		molex MOLEX-JAPAN CO.,LTD. 日本モレックス株式会社
30以上 OVER		±0.4			NYLON 66, UL94V-2		
10以上 30未滿 UNDER		±0.3			仕上げ FINISH		EDP. NO.
未滿 UNDER		±0.2			適用電線範囲 WIRE RANGE		39-01-2**1
一般公差 GENERAL TOLERANCES					被覆外径 INS. RANGE		ENG. NO.
					DRAWN BY 88/10/14 H.HIRAMOTO Y.YAMADA		SD-5559-NP
					CHK'D BY 88/10/21 M.ENOMOTO		REV G
					APP'D BY 88/10/24 M.ENOMOTO		
					尺 度 SCALE 3 - 1		

THIS DRAWING CONTAINS INFORMATION THAT IS PROPRIETARY TO MOLEX(JAPAN) AND SHOULD NOT BE USED WITHOUT WRITTEN PERMISSION  
本図面は日本モレックス(株)の所有する情報を含むもので 当社の許可なく複製を禁止する。

MXJ-8

5559.507