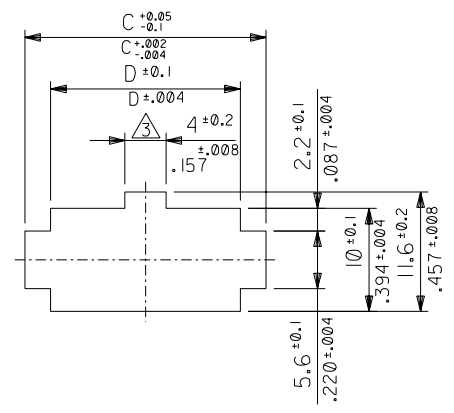
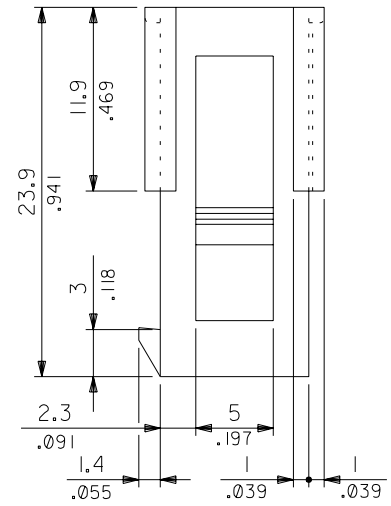
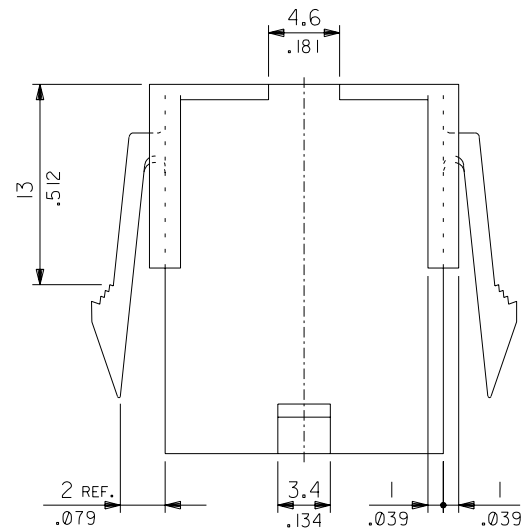
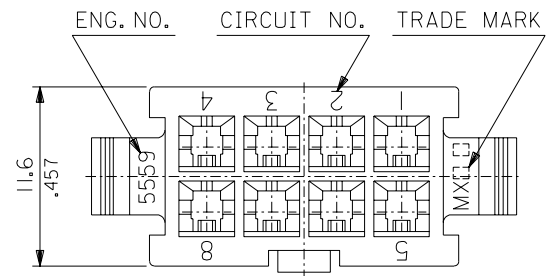
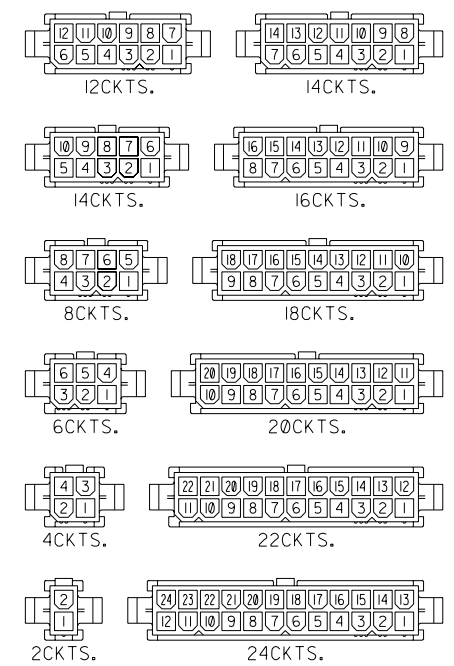


:MM DIMENSIONS IN METRIC DO NOT SCALE DRAWING

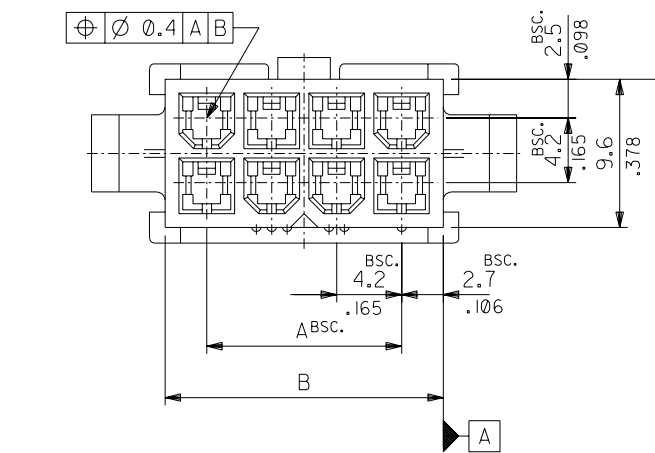
ENG. NO. SD-5559-NP-210
EDP NO. 39-01-2**6



RECOMMENDED PANEL HOLE DIMENSION
(THICKNESS : 0.8-2.0/.032-.079)



CIRCUIT SIZE LAYOUT (SCALE : 1-1)



NOTES

1. TERMINAL : 5558 SERIES
2. MATES WITH : 5557-NR-210
3. THIS DIMENSION IS ALLOWABLE UP TO "D" DIMENSION IN CASE OF 2 CIRCUITS.
4. PANEL HOLE TO BE PUNCHED OUT IN THE SAME DIRECTION AS INSERTION INTO THE PANEL.

| | | | | | | |
|------------|------------|------------|------------|------------|--------------|---------|
| 52.1/2.051 | 57.0/2.244 | 51.6/2.031 | 46.2/1.819 | 39-01-2246 | 5559-24P-210 | 24 |
| 47.9/1.886 | 52.8/2.079 | 47.4/1.866 | 42.0/1.654 | -2226 | -22P-210 | 22 |
| 43.7/1.720 | 48.6/1.913 | 43.2/1.701 | 37.8/1.488 | -2206 | -20P-210 | 20 |
| 39.5/1.555 | 44.4/1.748 | 39.0/1.535 | 33.6/1.323 | -2186 | -18P-210 | 18 |
| 35.3/1.390 | 40.2/1.583 | 34.8/1.370 | 29.4/1.158 | -2166 | -16P-210 | 16 |
| 31.1/1.224 | 36.0/1.417 | 30.6/1.205 | 25.2/.992 | -2146 | -14P-210 | 14 |
| 26.8/1.055 | 31.8/1.252 | 26.4/1.039 | 21.0/.827 | -2126 | -12P-210 | 12 |
| 22.6/.890 | 27.6/1.087 | 22.2/.874 | 16.8/.661 | -2106 | -10P-210 | 10 |
| 18.4/.724 | 23.4/.921 | 18.0/.709 | 12.6/.496 | -2086 | -08P-210 | 8 |
| 14.2/.559 | 19.2/.756 | 13.8/.543 | 8.4/.331 | -2066 | -06P-210 | 6 |
| 10.0/.394 | 15.0/.591 | 9.6/.378 | 4.2/.165 | -2046 | -04P-210 | 4 |
| 5.8/.228 | 10.8/.425 | 5.4/.213 | — | 39-01-2026 | 5559-02P-210 | 2 |
| D | C | B | A | EDP NO. | ENG. NO. | CIRCUIT |

| | | | | | |
|---|---------------------------|------------------------------|---------------------------|---|--------------|
| 材料 MATERIAL | | NYLON 66, UL94V-0 | | molex MOLEX-JAPAN CO.,LTD. 日本モレックス株式会社 | |
| 仕上げ FINISH | | — | | EDP. NO. 39-01-2**6 | |
| 適用電線範囲 WIRE RANGE | | — | | ENG. NO. SD-5559-NP-210 | |
| 被覆外径 INS. RANGE | | — | | REV C | |
| 角度 ANGLE | ±3° | 記号 C | REVISD & REDRAWN (J80832) | H.H. 88/10/17 | 日付 DATE |
| 30°以上 OVER | ±0.4 ±0.3 | TR | 変更内容 REVISION RECORD | DR. CHK. | 日付 DATE |
| 10°以上 OVER 30°未滿 UNDER | ±0.3 ±0.25 | DRAWN BY 88/10/14 H.HIRAMOTO | | | |
| 10°未滿 UNDER | ±0.2 | CHK'D BY 88/10/21 M.WAKAHARA | | | |
| 一般公差 GENERAL TOLERANCES | REVISE ONLY ON CAD SYSTEM | | | | 尺度 SCALE 3-1 |
| TITLE 名称 NEW MINI.FIT CONNECTOR CRIMP PIN HOUSING | | | | | |