

Switch Language

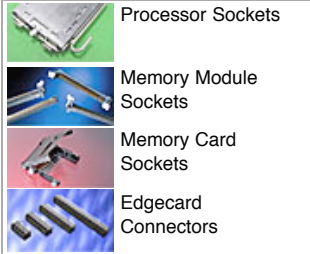
English

Need Assistance?

Contact Us
Find a Distributor
Order Samples
Tech Library

Printer-friendly page

Email this page

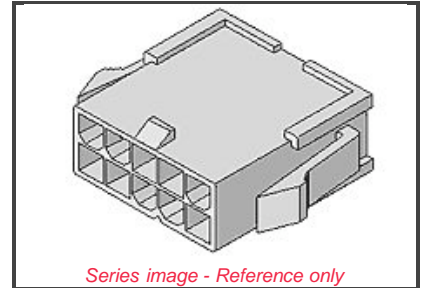


Datasheet

0012021

Overview: **Mini-Fit Jr.™**

(.165") Pitch Mini-Fit Jr.™ Plug Housing, Dual Row, with Mount Ears, UL 94V-2, Panel Mount, 2 Circuits



Documents:

Note - Please disable browser pop-up blockers for documents on www.molex.com

- [Drawing \(PDF\)](#)
- [Product Specification PS-5557-003 \(PDF\)](#)
- [Product Specification PS-5557-012 \(PDF\)](#)
- [Product Specification PS-5557-013 \(PDF\)](#)
- [Product Specification PS-5557-016 \(PDF\)](#)
- [Product Specification PS-5557-042 \(PDF\)](#)
- [3D Model](#)
- [Related Catalog Page \(PDF\)](#)

Order Products:

- [Check Distributor Inventory](#)
- [Request Samples](#)
- [Add to My Parts](#)

Part Detail: [\(show all\)](#)

General Physical Electrical Material Info

General

Product Family Crimp Housings
Series [5559](#)
Comments Glow Wire Equivalent Part Number [50361734](#)
Not for use with Strain Relief
Overview [Mini-Fit Jr.™](#)
Product Name Mini-Fit Jr.™

Physical

Breakaway No
Circuits (maximum) 2
Color - Resin Natural
Flammability 94V-2
Gender Male
Material - Resin Nylon
Number of Rows 2
Packaging Type Bag
Panel Mount Yes
Pitch - Mating Interface (in) 0.165 In
Pitch - Mating Interface (mm) 4.20 mm
Pitch - Term. Interface (in) 0.165 In
Pitch - Term. Interface (mm) 4.20 mm
Polarized to Mating Part Yes
Stackable No
Temperature Range - Operating -40°C to +105°C

Electrical

CSA LR19980
TUV R75142
UL E29179

EU RoHS
ELV and RoHS Compliant



Need more information on product compliance?

Email productcompliance@molex.com

Please visit the [Contact Us](#) section for any non-product compliance questions.

Search Parts in this Series

[5559](#) Series

Mates With

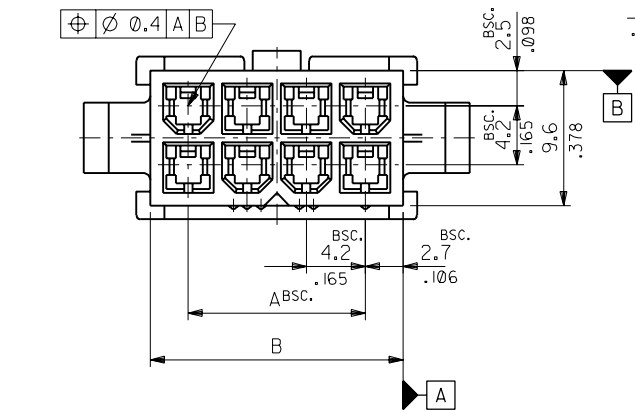
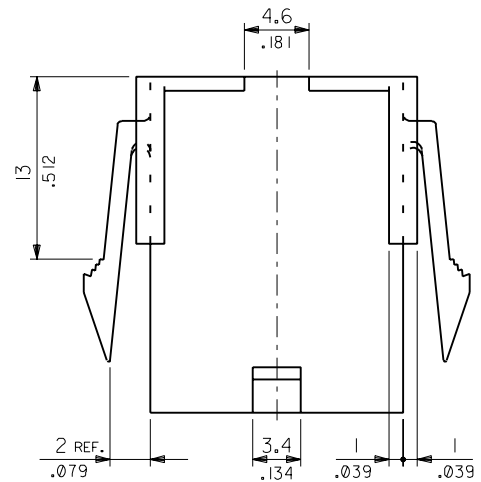
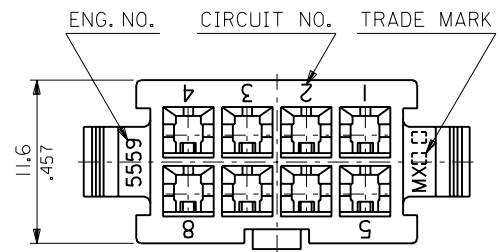
[5557d](#) Receptacle Housing

Use With

[5558](#), [44478](#), [30490](#), [41995](#)

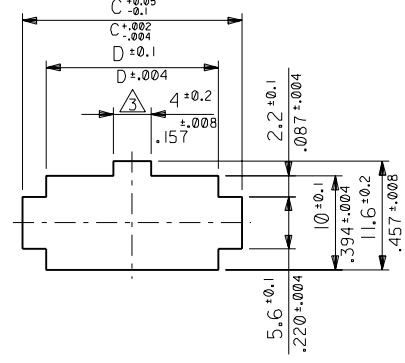
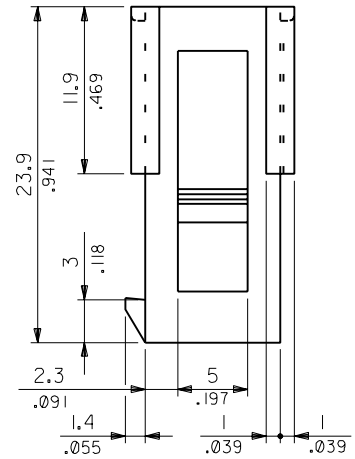
:MM DIMENSIONS IN METRIC DO NOT SCALE DRAWING

ENG. NO. SD-5559-NP
EDP NO. 39-01-2**1

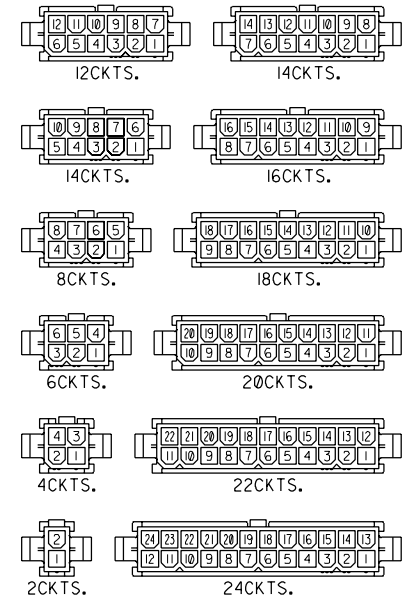


NOTES

1. TERMINAL : 5558 SERIES
2. MATES WITH : 5557-NR
- △ THIS DIMENSION IS ALLOWABLE UP TO "D" DIMENSION IN CASE OF 2 CIRCUITS.
4. PANEL HOLE TO BE PUNCHED OUT IN THE SAME DIRECTION AS INSERTION INTO THE PANEL.



RECOMMENDED PANEL HOLE DIMENSION
(THICKNESS : 0.8-2.0/.032-.079)



CIRCUIT SIZE LAYOUT (SCALE : 1-1)

52.1/2.051	57.0/2.244	51.6/2.031	46.2/1.819	39-01-2241	5559-24P	24
47.9/1.886	52.8/2.079	47.4/1.866	42.0/1.654	▲ -2221	▲ -22P	22
43.7/1.720	48.6/1.913	43.2/1.701	37.8/1.488	-2201	-20P	20
39.5/1.555	44.4/1.748	39.0/1.535	33.6/1.323	-2181	-18P	18
35.3/1.390	40.2/1.583	34.8/1.370	29.4/1.158	-2161	-16P	16
31.1/1.224	36.0/1.417	30.6/1.205	25.2/.992	-2141	-14P	14
26.8/1.055	31.8/1.252	26.4/1.039	21.0/.827	-2121	-12P	12
22.6/.890	27.6/1.087	22.2/.874	16.8/.661	-2101	-10P	10
18.4/.724	23.4/.921	18.0/.709	12.6/.496	-2081	-08P	8
14.2/.559	19.2/.756	13.8/.543	8.4/.331	-2061	-06P	6
10.0/.394	15.0/.591	9.6/.378	4.2/.165	▼ -2041	▼ -04P	4
5.8/.228	10.8/.425	5.4/.213	—	—	—	2
				39-01-2021	5559-02P	2
	D	C	B	A	EDP NO.	ENG. NO.
						CIRCUIT

角 度 ANGLE		±3°			材 料 MATERIAL	molex MOLEX-JAPAN CO.,LTD. 日本モレックス株式会社	
30以上 OVER		±0.4 ±0.1			仕 上 げ FINISH	EDP. NO. 39-01-2**1	
10以上 30未 満 UNDER		±0.3 ±0.2			適 用 電 線 範 圍 WIRE RANGE	ENG. NO. SD-5559-NP	
10未 満 UNDER		±0.2			被 覆 外 径 INS. RANGE	REV G	
一 般 公 差 GENERAL TOLERANCES			記 号 LTR	更 改 内 容 REVISION RECORD	DR. CHK.	日 付 DATE	TITLE 名 称 NEW MINI.FIT CONNECTOR CRIMP PIN HOUSING
			G	REVISED & REDRAWN (J80832)	H.H. Y.y	88/10/11	
					DR. CHK.	88/10/14	
					APP'D BY	88/10/24	
					M.ENOMOTO		

THIS DRAWING CONTAINS INFORMATION THAT IS PROPRIETARY TO MOLEX(JAPAN) AND SHOULD NOT BE USED WITHOUT WRITTEN PERMISSION
本図面は日本モレックス(株)の所有する情報を含むもので 当社の許可なく複製を禁止する。